

**Kripsol Koral KS-150**  
(22 3/ 220 )





		5	6	8	10	11	12	14	16	18
( )	. /	27,5	25,5	23	21,9	20,8	19,7	16,4	11,8	6,2

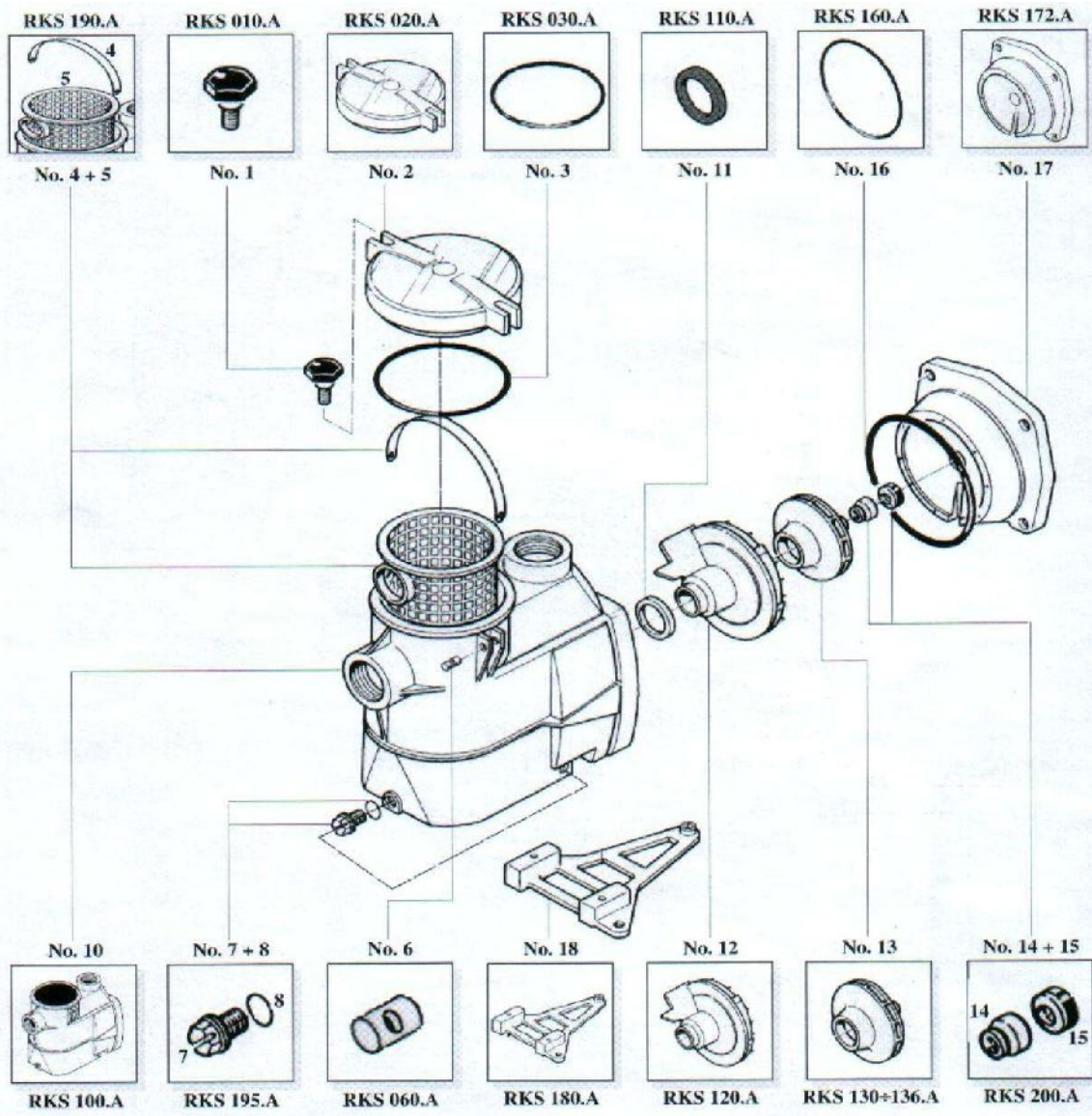
1.4. \_\_\_\_\_

Kripsol Korral KS-150

2 3,

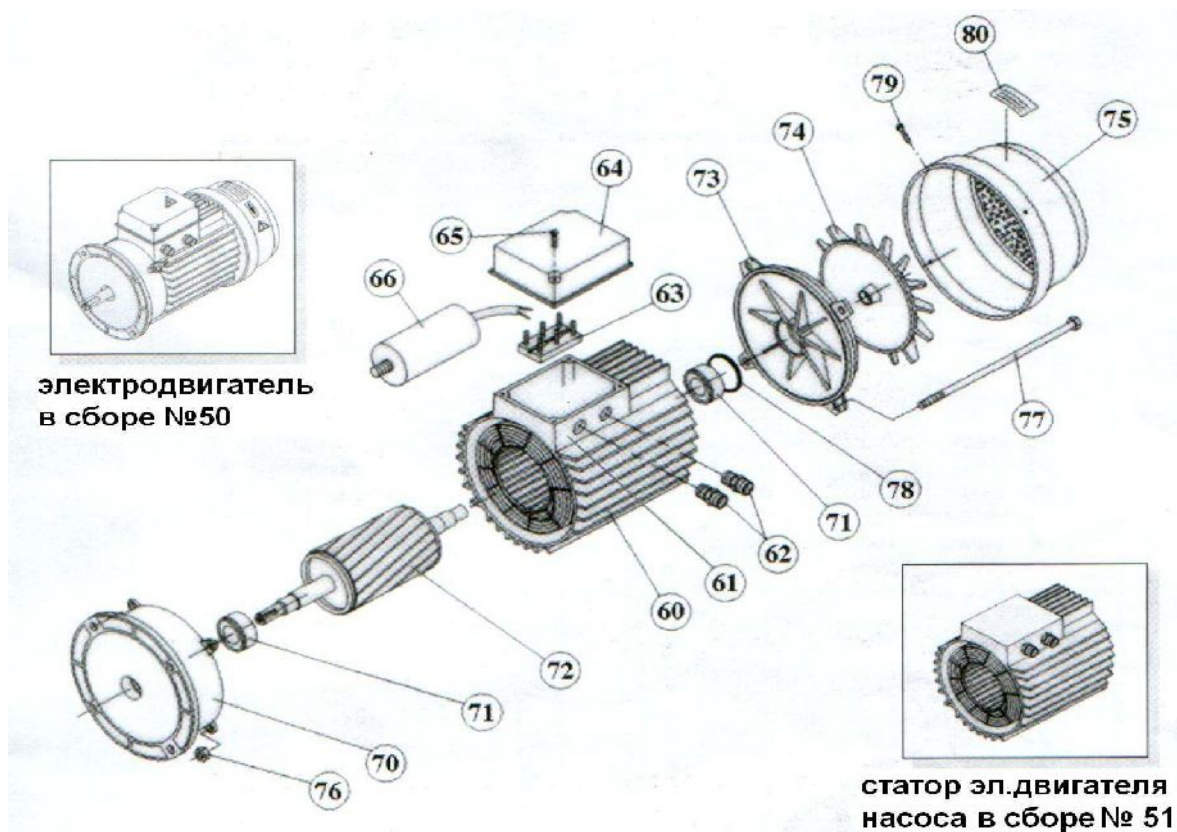
3 4

2



3

1	KS, KAP Kripsol RKS 010.A
2	KS Kripsol RKS 020.A
3	- KS Kripsol RKS 030.A
5	KS Kripsol RKS 190.A/5
6	OK,NK,KS,KAP Kripsol RKS 060.A
7-8	OK,NK,KS,KAP Kripsol RKS 195.A/7
10	KS Kripsol RKS 100.A
11	- KS Kripsol RKS 110.A
12	KS Kripsol RKS 120.A
13	KS-150 Kripsol RKS 134.A
14+15	( .2 ) , KS Kripsol RKS 200.A
16	( ) KS Kripsol RKS 160.A
17	( ) KS Kripsol RKS 172.A
18	OK, KS Kripsol RKS 180.A



4

50	KS-150 (220 ) Kripsol (5031.A)
51	S-150 (220 ) Kripsol (5131. )
60	( )
61	( )
62	( )
63	( )
64	KS-150, 200, 300 KA/KAP-250,300 ( -80) Kripsol (6405. )
65	25 (6605. )
70	KS-150, 200, 300 KA/KAP-250,300 ( -80) Kripsol (7004.A)
71	( ) . .KS,KA/KAP( -80) ( )KA/KAP( -90) Kripsol 6204-ZZ
71	( ) . KS-150, 200, 300 KA/KAP-250,300 ( -80) Kripsol 6203-ZZ
72	KS-150 Kripsol (7231. )
73	KS, KA/KAP-250,300 ( -80) Kripsol (7303.A)
74	KS-150, 200, 300, KA,KAP-250, 300 ( -80) Kripsol (7403.A)
75	KS-150, 200, 300 KA/KAP-250,300 ( -80) Kripsol (7503.A)
76	
77	KS
78	KS
79	KS
80	

1.5. \_\_\_\_\_  
Kripsol Koral KS-150  
( )

( 13 .2)

( 10 .2)

( 12

.2).

Kripsol Koral KS-150

( 10 )

( )

1.6. \_\_\_\_\_.

**BHIMAHHE !!!**

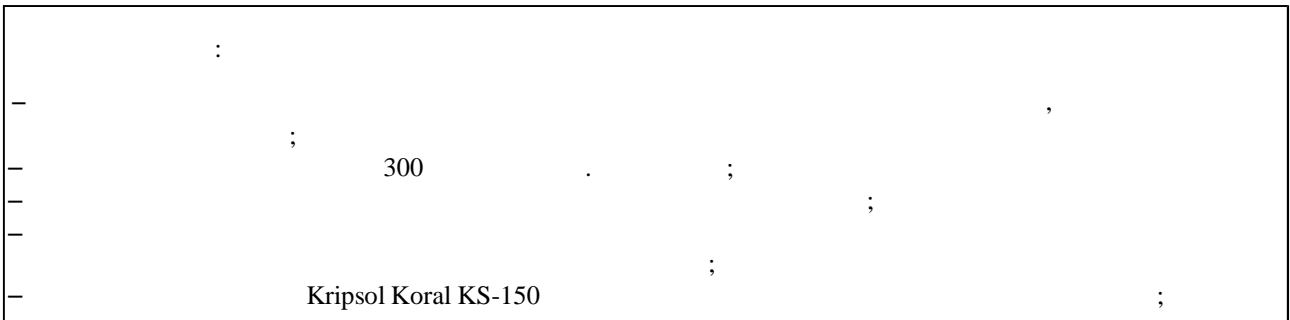


		640	260	334

2.

2.1. \_\_\_\_\_.

Kripsol Koral KS-150



2.2. \_\_\_\_\_.

Kripsol Koral KS-150

( ),

- 12.1.019-79 .
- 12.1.013-78 .
- 12.3.032-84 .
- 12.3.019-80 .
- 12.1.030-81 .
- 153-34.0-03.150-00.

12.3.006-75 .

12.1.005-88 .

12.3.009-76 .

12-03-01. .

12-04-02. .

12.1.004-91 .

01-93. .

22.0.01-94. .

22.3.03-94. .

I.

2.

2.3. \_\_\_\_\_.

Kripsol Koral KS-150

— : \_\_\_\_\_ ( , )

— , ,

— ,

— Kripsol Koral KS-150 1%

— +35 60%, +10

— Kripsol Koral KS-150 :

— Kripsol Koral KS-150 ,

— Kripsol Koral KS-150 24-

2.4. \_\_\_\_\_.

— Kripsol Koral KS-150 :

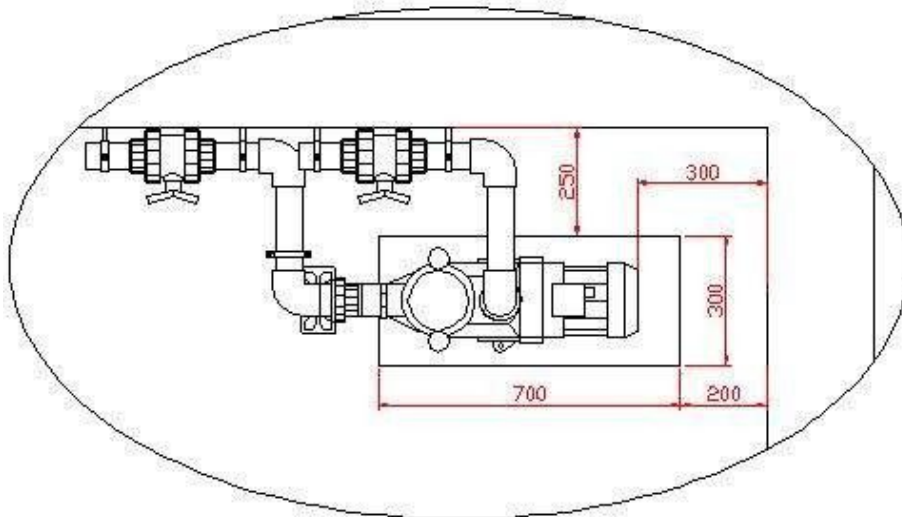
— Kripsol Koral KS-150 ( )

— ( 3 )

— 100 .

4.

4



— Kripsol Koral KS-150 ( )

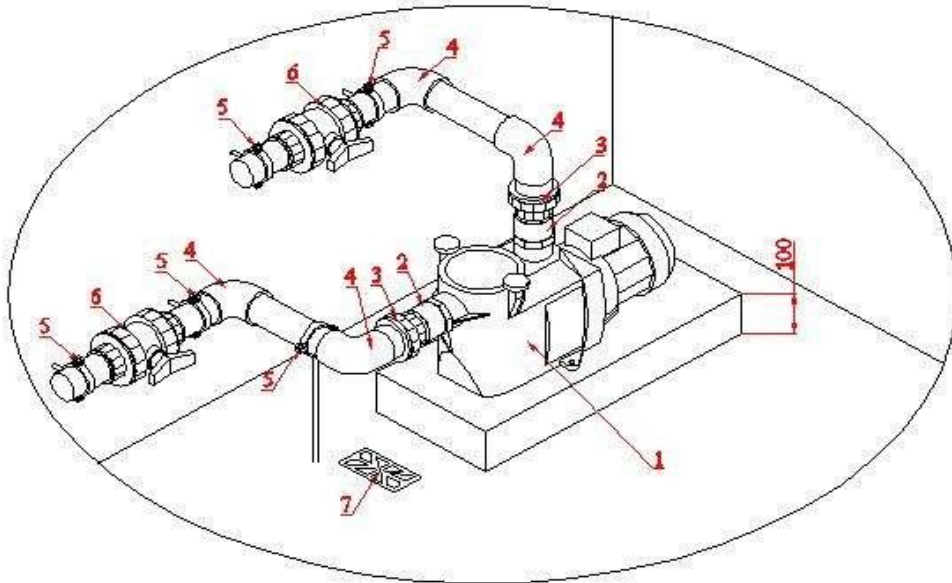
— )

150.

Kripsol Koral KS

— Kripsol Koral KS-150 5.

— 5.

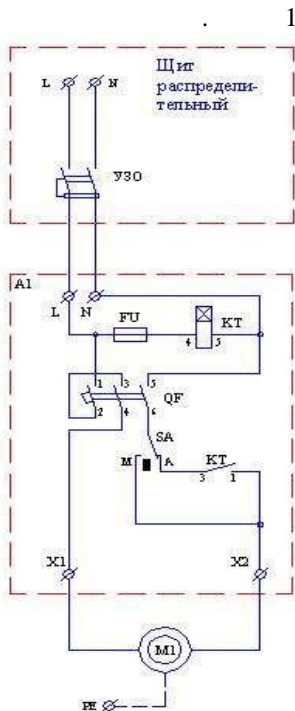


5

1	( 22 3/ 220 ) Kripsol Koral KS-150
2	. 63/75-2" Coraplast (7308063)
3	. 63 Coraplast (7414063)
4	90 . . 63 Coraplast (7101063)
5	. 63
6	. 63 Coraplast (1010063)
7	( )

— Kripsol Koral KS-150 (220 )

1.  
3 1.5 2,

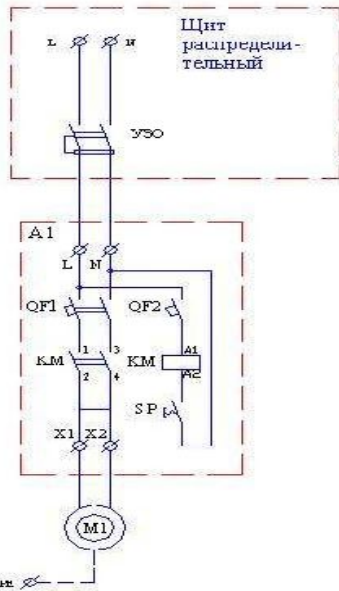


1	(1) 230v -100*
1	Kripsol Koral KS-150
QF	3- . 10A
КТ	-100, -25
FU	/ . . -100
SA	3- . ( )

\* (1) 230v -100  
(1) 230v -100.

— )  
Kripsol Koral KS-150 (220 )

2.  
3 1.5 2,



1	220-02 *
1	Kripsol Koral KS-150 (220 )
QF1	3- .10A
QF2	1- .6A
	B-7-40-00 14A
S	

\*

220-02

220-02

Kripsol Koral KS-150

2.5.

Kripsol Koral KS-150

2.6.

.1.2.

3.1.

Kripsol Koral KS-150





	.1.2.	
	( , )	( : ..).
		3
	.1.2.	
e		
	( , )	
	/	

3.4. \_\_\_\_\_

12.3.019-80, "

Kripsol Koral KS-150

","

".



!	Kripsol Koral KS-150
---	----------------------

3.5. \_\_\_\_\_

4.

4.1. \_\_\_\_\_

Kripsol Koral KS-150

Kripsol Koral KS-150



\_\_\_\_\_ : Kripsol Koral KS-150

4.2. \_\_\_\_\_

( )

.2.2. .3.4.

4.3. \_\_\_\_\_



! \_\_\_\_\_ Kripsol Koral KS-150

.2.4.

4.4. \_\_\_\_\_

Kripsol Koral KS-150  
)

.2.5.

(

4.5. \_\_\_\_\_

.1.2. ( )

.2.4.

;

:

.1.2. .6.

5.

5.1. \_\_\_\_\_

**BHIMAHIE !!!**

\_\_\_\_\_

5.2. \_\_\_\_\_

.2.2. .3.4.

Kripsol Koral KS-150

+10°

+35°

60%



[Empty rectangular box]

7.

Kripsol Koral KS-150

8.

Kripsol Koral KS-150

Kripsol Koral KS-150

9.

Kripsol Koral KS-150

\_\_\_\_\_

«\_\_\_\_\_» \_\_\_\_\_ 20\_\_\_\_\_

10.

\_\_\_\_\_

«\_\_\_\_\_» \_\_\_\_\_ 20\_\_\_\_\_

1.

( )

2.

12( )

3.

:

4.

30( )

90( )

5.

( )

6.

7.

8.

8.1.

8.2.

8.3.

9.

9.1.

9.2.

10.

11.

12.

13.

14.

15.

16.

17.

18.

19.

( )

14( )

90( )