

Kripsol Kapri KAP-450
(78 3/ 380)



1.

1.1. _____.

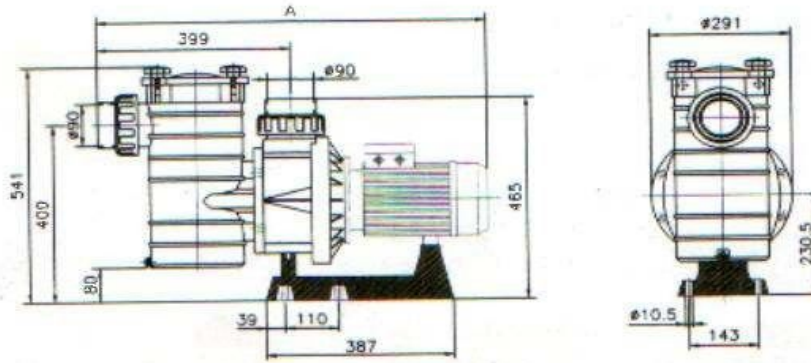
Kripsol Kapri KAP-450

;
-
- (, , ;)
;

1.2 _____.

Kripsol Kapri KAP-450

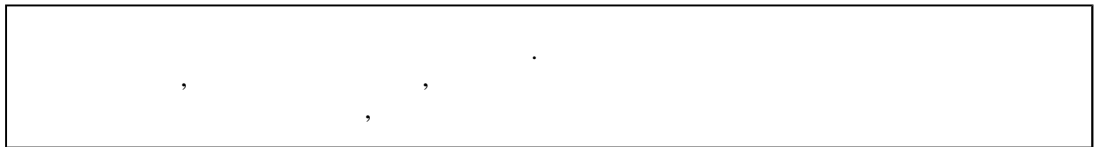
1
1



		801 ()	291	541
--	--	---------	-----	-----

1.3. _____.

ВНИМАНИЕ !!!



Kripsol Kapri KAP-450

4.2 15150.

Kripsol Kapri KAP-450

1

1

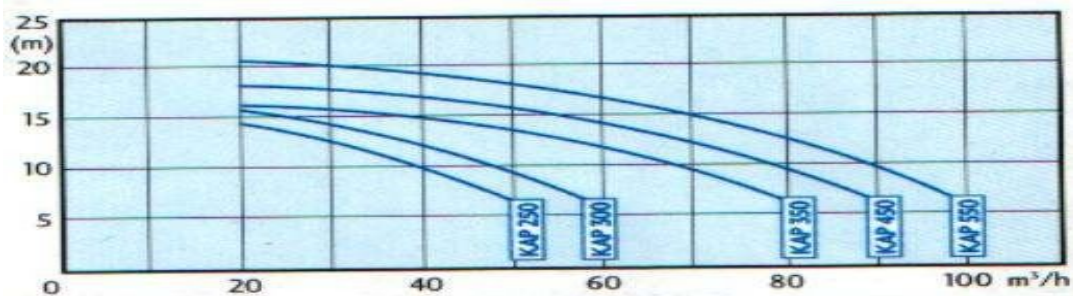
		~ 380
	%	± 4%
		4.04
		6.75
	-	I
	-	F
		IP 54
		30.5
	°	+10 +35
	%	60
	°	45
		2,5
		90
		90

Kripsol Kapri KAP-450

2

1

1



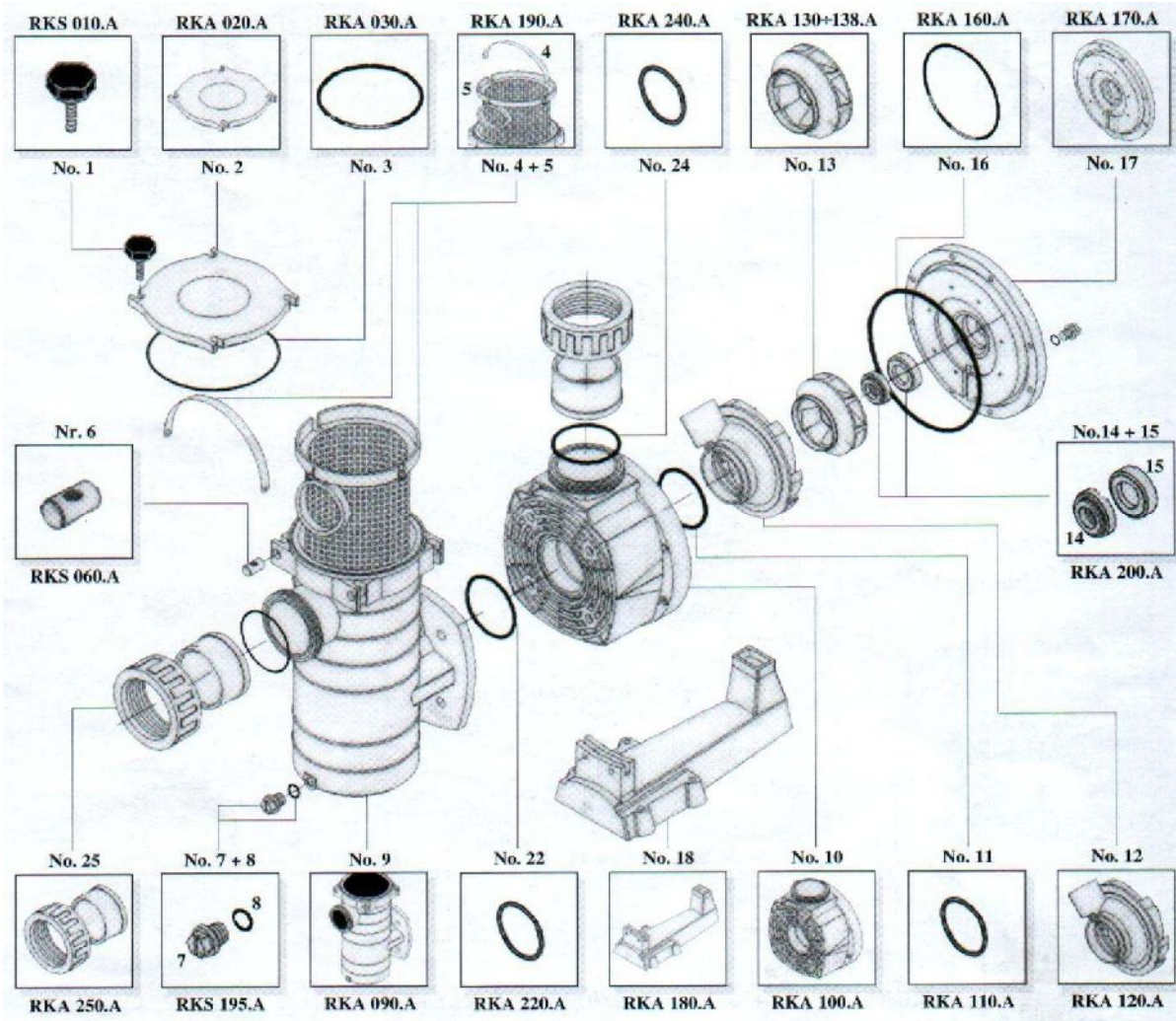
		6	8	10	12	14	16	18	20
()	.	93	85	78	71	62	45	20	-

1.4. _____.

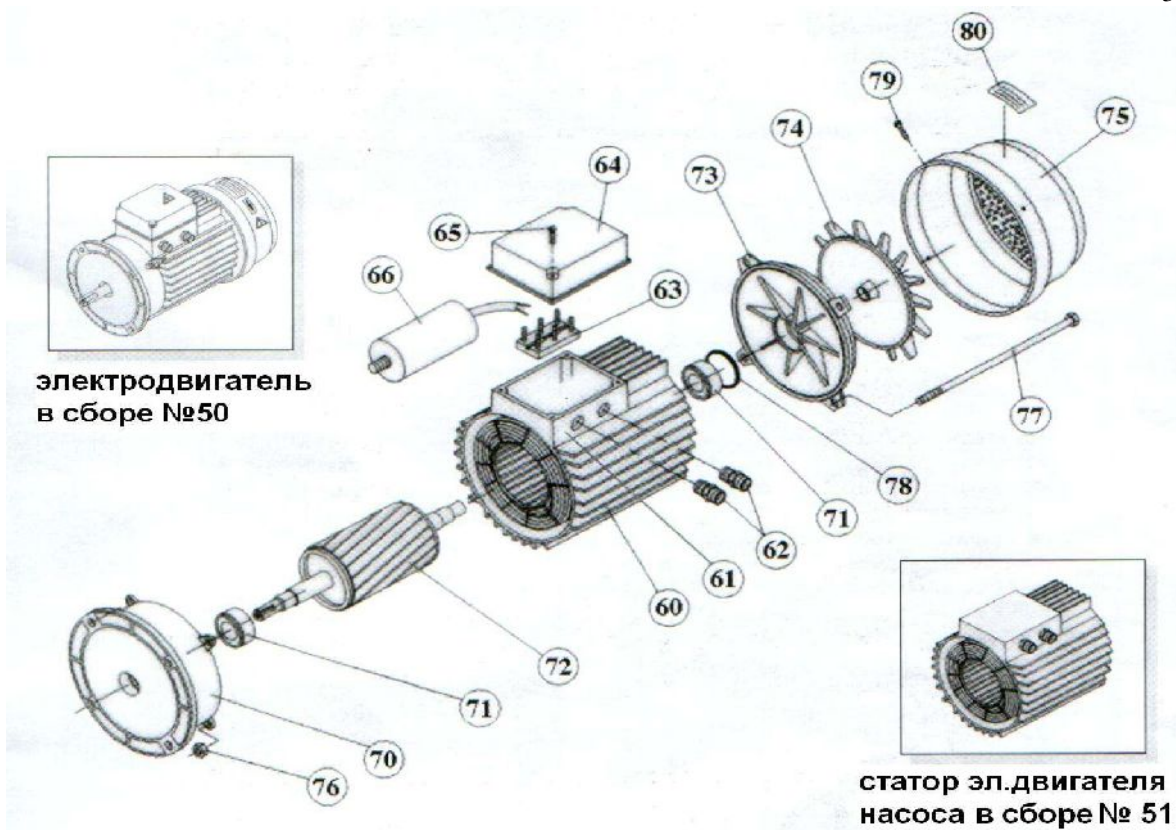
Kripsol Kapri KAP-450

2 3,

3 4



1		KS, KAP Kripsol RKS 010.A
2		KAP Kripsol RKA 020.A
3	-	KAP Kripsol RKA 030.A
4+5		KAP Kripsol RKA 190.A/5
6		OK,NK,KS,KAP Kripsol RKS 060.A
7+8		OK,NK,KS,KAP Kripsol RKS 195.A/7
9		KAP Kripsol RKA 090.A
10		KA, KAP Kripsol RKA 100.A
11	-	KA, KAP Kripsol RKA 110.A
12		KA/KAP Kripsol RKA 120.A
13		KAP-450 Kripsol RKA 136.A
14+15	(.2)	KA/KAP Kripsol RKA 200.A
16	()	KA/KAP Kripsol RKA 160.A
17	() /	Kripsol RKA 170.A
18		KA,KAP Kripsol RKA 180.A
22	-	KA/KAP Kripsol RKA 220.A
24	-	Kripsol RKA 240.A
25	,	.90 Kripsol RKA 250.A



4

50	КА/КАР-450 (380) Kripsol (5046.A)
51	КА/КАР-450 (380) Kripsol (5146.A)
60	()
61	()
62	()
63	()
64	КА/КАР-450,450 (-90) Kripsol (6407.)
65	
66	
70	КА/КАР-250,300,350,450 (-90) Kripsol (7005.A)
71	() . КА/КАР-250,300,350,450 (-90) Kripsol 6205-ZZ
71	(.) . .KS,КА/КАР(-80)(.)КА/КАР(-90) Kripsol 6204-ZZ
72	КА/КАР-450 (380) Kripsol (7246.)
73	КА/КАР-250,300,350,450 (-90) Kripsol (7304.A)
74	КА,КАР-250,300,350,450 (-90) Kripsol (7404.A)
75	() КА/КАР-250,300,350,450 (-90) Kripsol (7504.A)
76	
77	КА/КАР
78	КА/КАР
79	КА/КАР
80	

1.5. _____
Kripsol Kapri KAP-450
()

(13 .2)

(10 .2)

(12 .2).
Kripsol Kapri KAP-450

(10)

()

1.6. _____

ВНИМАНИЕ !!!



		810	325	575

2.

2.1. _____

Kripsol Kapri KAP-450



_____ ;

_____ ;

_____ ;

_____ ;

_____ ;

_____ ;

_____ ;

Kripsol Kapri KAP-450

2.2. _____

Kripsol Kapri KAP-450

(), ,

- 12.1.019-79 .
- 12.1.013-78 .
- 12.3.032-84 .
- 12.3.019-80 .
- 12.1.030-81 .
- 153-34.0-03.150-00.

12.3.006-75 .

12.1.005-88 .

12.3.009-76 .

12-03-01. .

12-04-02. .

12.1.004-91 .

01-93.

22.0.01-94. .

22.3.03-94. .

I.
2.

2.3. _____.

Kripsol Kapri

KAP-450

- _____ (_____)

- _____

- _____

- _____ 1%

- _____ Kripsol Kapri KAP-450

- _____ 60%,

- +10 +35

- _____ Kripsol Kapri KAP-450 _____

- _____ Kripsol Kapri KAP-450 _____

- _____ Kripsol Kapri KAP-450 _____ 2

- _____

2.4. _____.

Kripsol Kapri KAP-450

Kripsol Kapri KAP-450

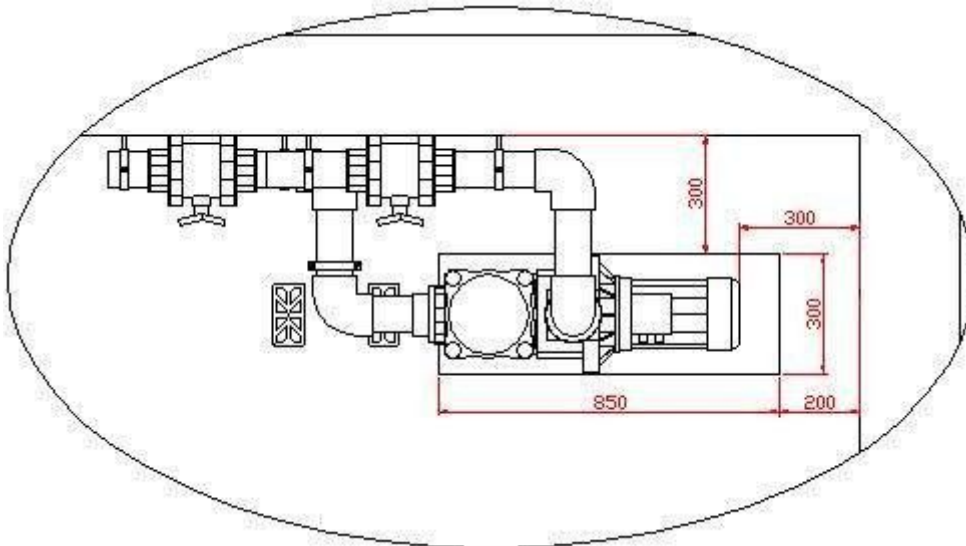
(3)

(_____)

100

4.

4



- _____ Kripsol Kapri KAP-450 _____ (_____)

- _____ (_____)

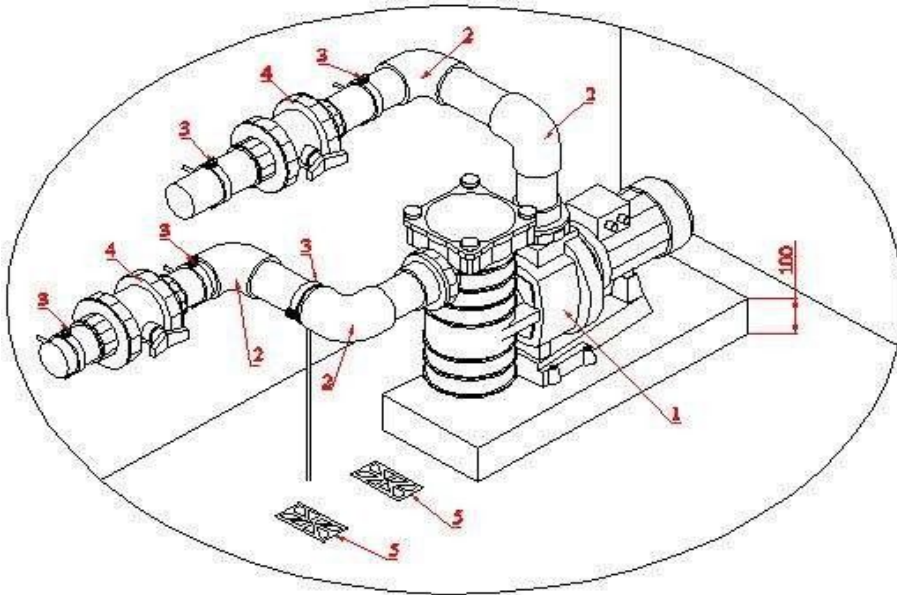
Kapri KAP-450.

Kripsol

Kripsol Kapri KAP-450

5.

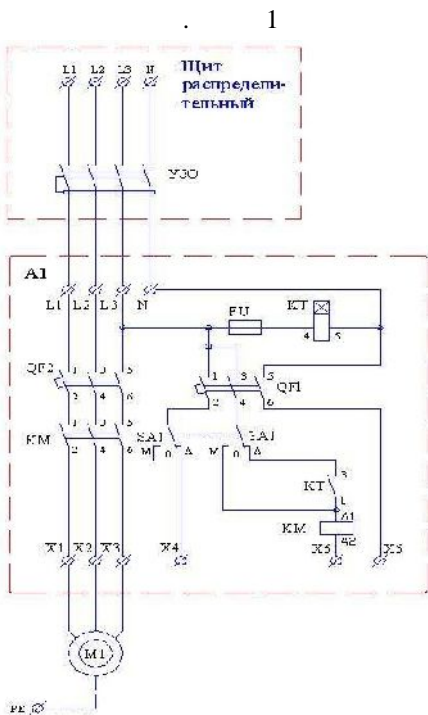
5.



5

1	(78 3/ 380) Kripsol Kapri KAP-450
2	90 . . 90 Coraplax (7101090)
3	. 90
4	. 90 Coraplax (1010090)
5	()

— Kripsol Kapri KAP-450 (380) 3 1.5 2, 1.



1	380-05 *
1	KA/KAP-450 (380) Kripsol (5046.A)
QF1	3- . 10A
QF2	3- . 10A
КТ	-100, -25
FU	1000 -25 (2) /
SA1	3- . ()
	B-7-40-00 14A

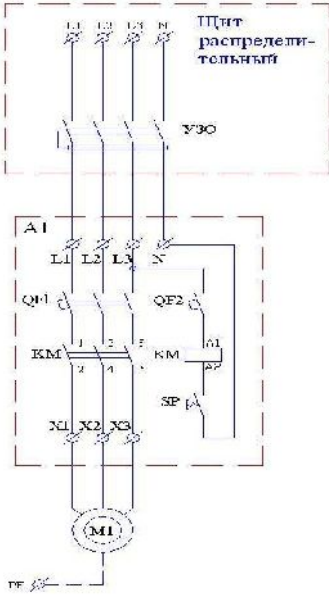
* 380-05

4, 5, 6

380-05 .

5 6.

— Kripsol Kapri KAP-450 (380) 4 1.5 2, 2.



1	380-05 *
1	KA/KAP-450 (380) Kripsol (5046.A)
QF1	3- . 10A
QF2	1- . 6A
S	B-7-40-00 14A

*
05

380-

380-05 .

Kripsol Kapri KAP-450

— ;

— ;

— ;

— ;

— ;

— ;

— ;

().

2.5.

Kripsol Kapri KAP-450

— ;

— ;

— ;

— ;

— ;

— ;

— ;

— ;



— ;

— ;

2.6.

— ;

— ;

— ;

1.2. ;

— ;

— ;



— ;

— ;

3.1. _____

Kripsol Kapri KAP-450

BHITMAHITTE !!!

Kripsol Kapri KAP-450
.2.5 2.6



Kripsol Kapri KAP-450



- Kripsol Kapri KAP-450
 .1.2. ;
 - Kripsol Kapri KAP-450
 4.2 15150 .1.2.
 ;
 - Kripsol Kapri KAP-450
 . 51232-98 2.1.4.559-96 ;
 - Kripsol Kapri KAP-450 6 12
 ();
 - Kripsol Kapri KAP-450 4 ;
 - Kripsol Kapri KAP-450 ;
 - Kripsol Kapri KAP-450 ;
 - Kripsol Kapri KAP-450 (;
 - Kripsol Kapri KAP-450 ;
 - Kripsol Kapri KAP-450 ;
 - Kripsol Kapri KAP-450 ;
 - Kripsol Kapri KAP-450 (;
 - Kripsol Kapri KAP-450 (;
 - Kripsol Kapri KAP-450 ();

3.2. _____

Kripsol Kapri KAP-450
+5°C

60%.

Kripsol Kapri KAP-450

Kripsol Kapri KAP-450

24-

Kripsol Kapri KAP-450

.2

3.3. _____

	.1.2.	
	(,)	(: .).
		3
	.1.2.	
e		
	(,)	
	/	

3.4. _____

12.3.019-80, "

Kripsol Kapri KAP-450

", "

".



!		Kripsol Kapri KAP-450
---	--	-----------------------

3.5. _____

4.

4.1. _____

Kripsol Kapri KAP-450

- _____ ;
- _____ ;
- _____ ;
- _____ ;
- _____ ;
- _____ ;



_____ Kripsol Kapri KAP-450

4.2. _____

()

.2.2. .3.4.

4.3. _____



_____ Kripsol Kapri KAP-450

.2.4.

4.4. _____

Kripsol Kapri KAP-450

.2.5.

()

4.5. _____

- .1.2. () ;
- .2.4. ;
- _____ .1.2. .6.

5.

5.1. _____

BHIMAHIE !!!

5.2. _____

.2.2. .3.4.

6.

Kripsol Kapri KAP-450

+10° +35°

60%



Empty rectangular box with a black border

7.
Kripsol Kapri KAP-450

Kripsol Kapri KAP-450
Kripsol Kapri KAP-450

9.

Kripsol Kapri KAP-450

«_____» _____ 20_____

10.

«_____» _____ 20_____

1.

2.

3.

12()

4.

30

()

90()

5.

()

6.

7.

8.

8.1.

8.2.

8.3.

- 9.
- 9.1.
- 9.2.
- 10.
- 11.
- 12.
- 13.
- 14.
- 15.
- 16.
- 17.
- 18.
- 19.
