



1.

1.1. \_\_\_\_\_.

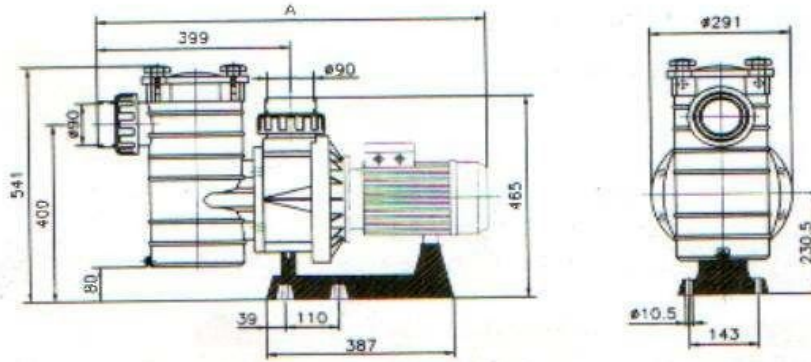
Kripsol Kapri KAP-350

\_\_\_\_\_ ;  
 \_\_\_\_\_ ( , , , ) ;

1.2 \_\_\_\_\_.

Kripsol Kapri KAP-350

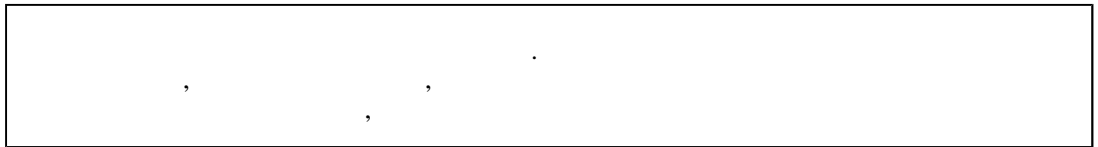
1  
1



		801 ( )	291	541
--	--	---------	-----	-----

1.3. \_\_\_\_\_.

**BHIMAHIE !!!**



Kripsol Kapri KAP-350

4.2 15150.

Kripsol Kapri KAP-350

1

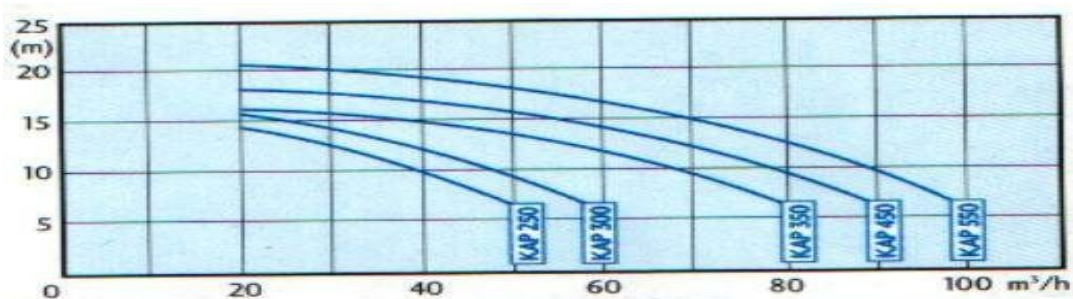
1

		~ 380
	%	± 4%
		3,26
		6
	-	I
	-	F
		IP 54
		28,5
	°	+10 +35
	%	60
	°	45
		2,5
		90
		90

Kripsol Kapri KAP-350

2

1



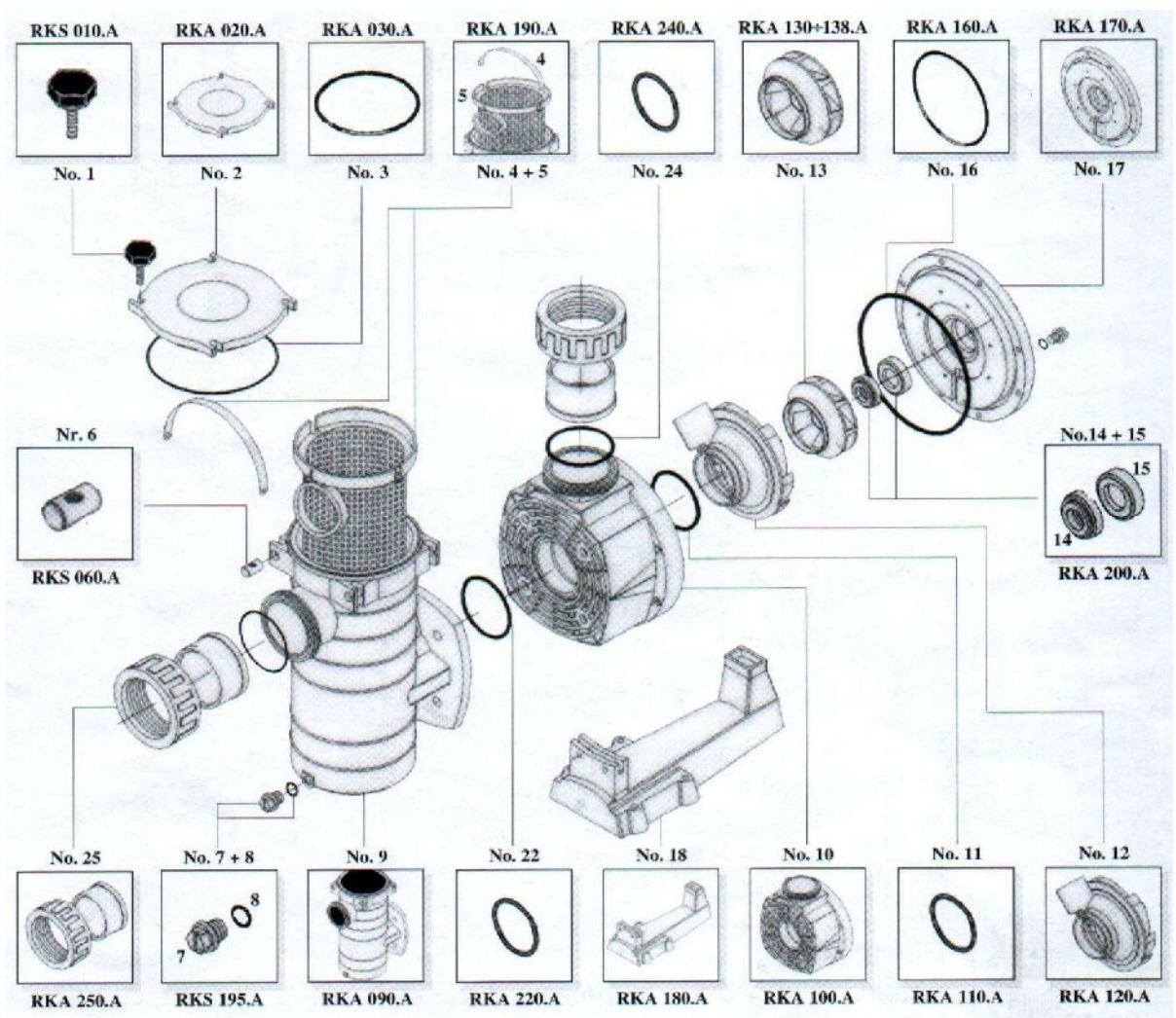
		6	8	10	12	14	16	18	20
( )	./	80	76	68	58	46	20	-	-

1.4. \_\_\_\_\_

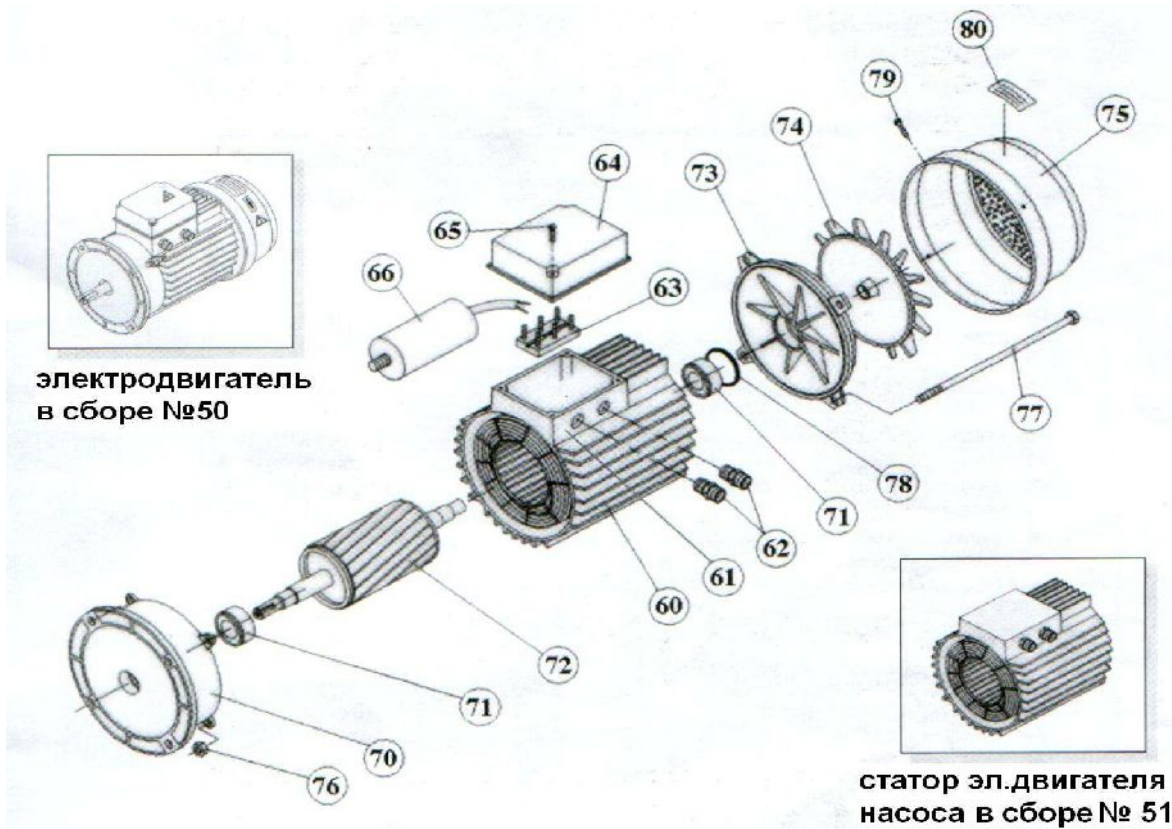
Kripsol Kapri KAP-350

2 3,

3 4



1		KS, KAP Kripsol RKS 010.A
2		KAP Kripsol RKA 020.A
3	-	KAP Kripsol RKA 030.A
4+5		KAP Kripsol RKA 190.A/5
6		OK,NK,KS,KAP Kripsol RKS 060.A
7+8		OK,NK,KS,KAP Kripsol RKS 195.A/7
9		KAP Kripsol RKA 090.A
10		KA, KAP Kripsol RKA 100.A
11	-	KA, KAP Kripsol RKA 110.A
12		KA/KAP Kripsol RKA 120.A
13		KA,KAP-350 Kripsol RKA 134.A
14+15	( .2 .)	KA/KAP Kripsol RKA 200.A
16	( )	KA/KAP Kripsol RKA 160.A
17	( )	/ Kripsol RKA 170.A
18		KA,KAP Kripsol RKA 180.A
22	-	KA/KAP Kripsol RKA 220.A
24	-	, Kripsol RKA 240.A
25	,	.90 Kripsol RKA 250.A



4

50	КА/КАР-350 (380 ) Kripsol (5045.A)
51	КА/КАР-350 (380 ) Kripsol (5145.A)
60	( )
61	( )
62	( )
63	( )
64	КА/КАР-350,450 ( -90) Kripsol (6407. )
65	
66	
70	КА/КАР-250,300,350,450 ( -90) Kripsol (7005.A)
71	( ) . КА/КАР-250,300,350,450 ( -90) Kripsol 6205-ZZ
71	( ) . .KS,КА/КАР( -80)( )КА/КАР( -90) Kripsol 6204-ZZ
72	КА/КАР-350 (380 ) Kripsol (7245. )
73	КА/КАР-250,300,350,450 ( -90) Kripsol (7304.A)
74	КА,КАР-250,300,350,450 ( -90) Kripsol (7404.A)
75	( ) КА/КАР-250,300,350,450 ( -90) Kripsol (7504.A)
76	
77	КА/КАР
78	КА/КАР
79	КА/КАР
80	

## 1.5. \_\_\_\_\_

Kripsol Kapri KAP-350  
( )

( 13 .2)

( 10 .2)

( 12 .2).

Kripsol Kapri KAP-350

( 10 )

( )

1.6. \_\_\_\_\_.

**ВНИМАНИЕ !!!**



		810	325	575

2.

2.1. \_\_\_\_\_.

Kripsol Kapri KAP-350



— ;

— ; 300 ;

— ;

— ;

— Kripsol Kapri KAP-350 ;

2.2. \_\_\_\_\_.

Kripsol Kapri KAP-350

( ), ,

- 12.1.019-79 .
- 12.1.013-78 .
- 12.3.032-84 .
- 12.3.019-80 .
- 12.1.030-81 .
- 153-34.0-03.150-00. ( )

12.3.006-75 .

- 12.1.005-88 .
- 12.3.009-76 .
- 12-03-01. I.
- 12-04-02. 2.
- 12.1.004-91 .
- 01-93. .

- 22.0.01-94. .
- 22.3.03-94. .



2.3. \_\_\_\_\_.

KAP-350

\_\_\_\_\_

- \_\_\_\_\_ ( \_\_\_\_\_ )

- \_\_\_\_\_

- \_\_\_\_\_

- \_\_\_\_\_ 1%

- \_\_\_\_\_ Kripsol Kapri KAP-350

- \_\_\_\_\_ 60%,

- +10 +35

- \_\_\_\_\_ Kripsol Kapri KAP-350 \_\_\_\_\_

- \_\_\_\_\_ Kripsol Kapri KAP-350 \_\_\_\_\_

- \_\_\_\_\_ Kripsol Kapri KAP-350 \_\_\_\_\_

- \_\_\_\_\_ 2

2.4. \_\_\_\_\_.

Kripsol Kapri KAP-350

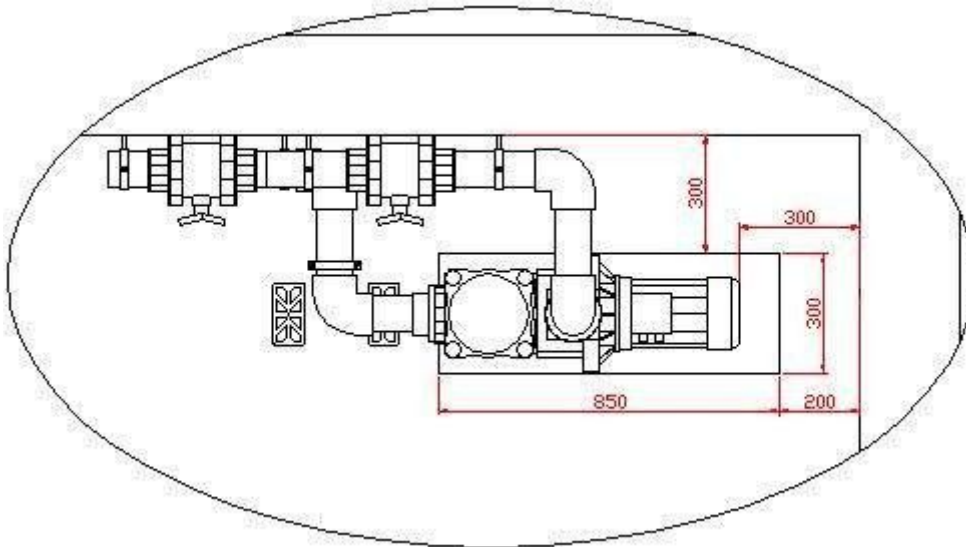
Kripsol Kapri KAP-350

( 3 )

100

4.

4



- \_\_\_\_\_ Kripsol Kapri KAP-350 \_\_\_\_\_ ( \_\_\_\_\_ )

- \_\_\_\_\_ ( \_\_\_\_\_ )

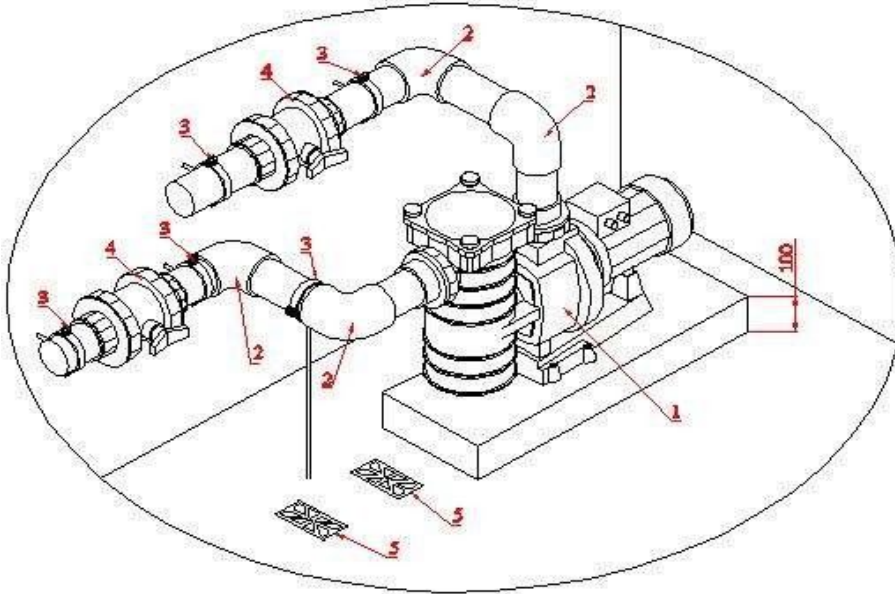
Kapri KAP-350.

Kripsol

Kripsol Kapri KAP-350

5.

5.

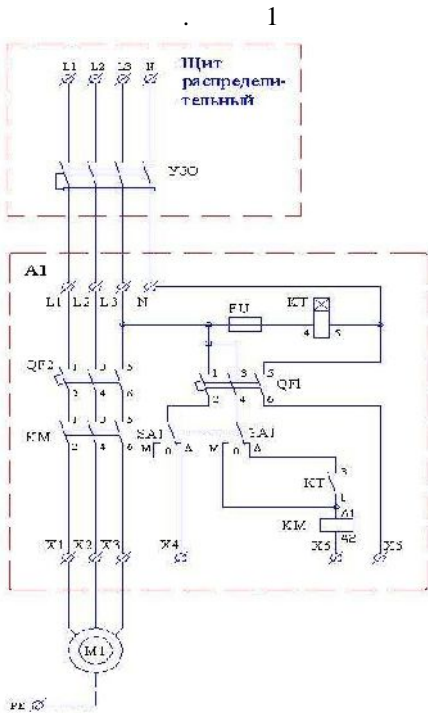


5

1	( 68 3/ 380 ) Kripsol Kapri KAP-350
2	90 . . 90 Coraplast (7101090)
3	. 90
4	. 90 Coraplast (1010090)
5	( )

— Kripsol Kapri KAP-350 (380 )

3 1.5 2, 1.



1	380-05 *
1	KA/KAP-350 (380 ) Kripsol (5045.A)
QF1	3- 10A
QF2	3- 10A
КТ	-100, -25
FU	1000 25 (2 ) /
SA1	3 . ( )
	B 7 40 00 14A

\* 380-05

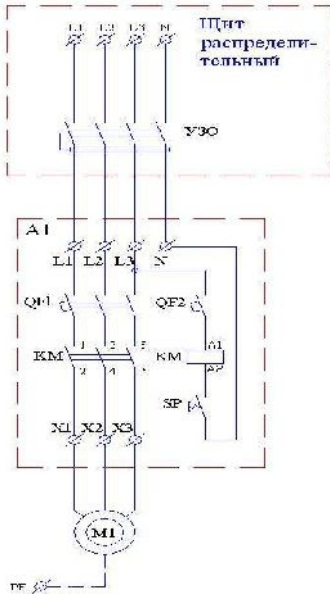
4, 5, 6

380-05 .

5 6.

— Kripsol Kapri KAP-350 (380 )

4 1.5 2, 2.



1	380-05 *
1	KA/KAP-350 (380 ) Kripsol (5045.A)
QF1	3- . 10A
QF2	1- . 6A
	B-7-40-00 14A
S	

\*  
05

380-

380-05 .

Kripsol Kapri KAP-350

- ;  
 - ;  
 - ;  
 - ;  
 - ;  
 - ;  
 - ;  
 - ;

2.5. \_\_\_\_\_  
 Kripsol Kapri KAP-350

- ;  
 - ;  
 - ;  
 - ;  
 - ;  
 - ;  
 - ;



\_\_\_\_\_

2.6. \_\_\_\_\_

- ;  
 - ;  
 1.2. , ;  
 - ;  
 - ;



\_\_\_\_\_



3.1. \_\_\_\_\_

Kripsol Kapri KAP-350

**BHITMAHITTE !!!**

Kripsol Kapri KAP-350  
.2.5 2.6



Kripsol Kapri KAP-350



-	Kripsol Kapri KAP-350			
-	.1.2. Kripsol Kapri KAP-350			
-	Kripsol Kapri KAP-350	4.2	15150	.1.2.
-	.51232-98 Kripsol Kapri KAP-350	2.1.4.559-96		
-	Kripsol Kapri KAP-350	6		12
-	( Kripsol Kapri KAP-350			);
-	Kripsol Kapri KAP-350			4
-	Kripsol Kapri KAP-350			;
-	Kripsol Kapri KAP-350			;
-	Kripsol Kapri KAP-350			(
-	);			
-	Kripsol Kapri KAP-350			,
-	;			
-	Kripsol Kapri KAP-350			
-	;			
-	Kripsol Kapri KAP-350			(
-	);			
-	Kripsol Kapri KAP-350			;
-	(			
-	Kripsol Kapri KAP-350			);
-	(			
-	Kripsol Kapri KAP-350			);

3.2. \_\_\_\_\_

Kripsol Kapri KAP-350  
+5°C

60%.

Kripsol Kapri KAP-350

Kripsol Kapri KAP-350

24-

Kripsol Kapri KAP-350

.2

3.3. \_\_\_\_\_

	.1.2.	
	( , )	( : . ).
		3
	.1.2.	
e		
	( , )	
	/	

3.4. \_\_\_\_\_

12.3.019-80, "

Kripsol Kapri KAP-350

", "

".



!		Kripsol Kapri KAP-350
---	--	-----------------------

3.5. \_\_\_\_\_

4.

4.1. \_\_\_\_\_

Kripsol Kapri KAP-350

- \_\_\_\_\_ ;
- \_\_\_\_\_ ;
- \_\_\_\_\_ ;
- \_\_\_\_\_ ;
- \_\_\_\_\_ ;
- \_\_\_\_\_ ;



\_\_\_\_\_ Kripsol Kapri KAP-350

4.2. \_\_\_\_\_

( )

.2.2. .3.4.

4.3. \_\_\_\_\_



\_\_\_\_\_ Kripsol Kapri KAP-350

.2.4.

4.4. \_\_\_\_\_

Kripsol Kapri KAP-350

.2.5.

( )

4.5. \_\_\_\_\_

- .1.2. ( ) ;
- .2.4. ;
- \_\_\_\_\_ .1.2. .6.

5.

5.1. \_\_\_\_\_

**BHIMAHITTE !!!**

\_\_\_\_\_

5.2. \_\_\_\_\_

.2.2. .3.4.

6.

Kripsol Kapri KAP-350

+10° +35°

60%



Empty rectangular box with a black border

7.  
Kripsol Kapri KAP-350

Kripsol Kapri KAP-350  
Kripsol Kapri KAP-350

8.

9.

Kripsol Kapri KAP-350

«\_\_\_\_\_» \_\_\_\_\_ 20\_\_\_\_\_

10.

«\_\_\_\_\_» \_\_\_\_\_ 20\_\_\_\_\_

1.

2.

3.

12( )

4.

30

( )

90( )

5.

( )

6.

7.

8.

8.1.

8.2.

8.3.

- 9. :
- 9.1. - , .8 ,
- 9.2. ( )
- 10. .8
- .9 ,
- 11. , . . . .
- 12. ,
- 13. - .
- 14. , (
- 15. , ,
- 16. , 14 ( ) , 90 ( )
- 17. ,
- 18. ,
- 19. ( )

---



---