

**Kripsol Karpa KA-450**  
(78 3/ 380 )



1.

1.1. \_\_\_\_\_.

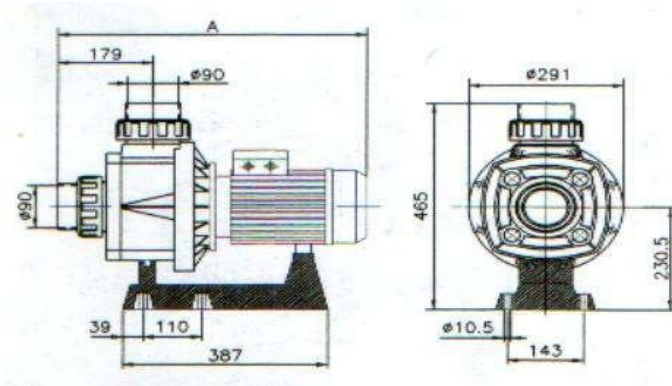
Kripsol Karpa KA-450

\_\_\_\_\_ : \_\_\_\_\_ ( \_\_\_\_\_ , \_\_\_\_\_ , \_\_\_\_\_ )  
 \_\_\_\_\_ ;

1.2 \_\_\_\_\_.

Kripsol Karpa KA-450

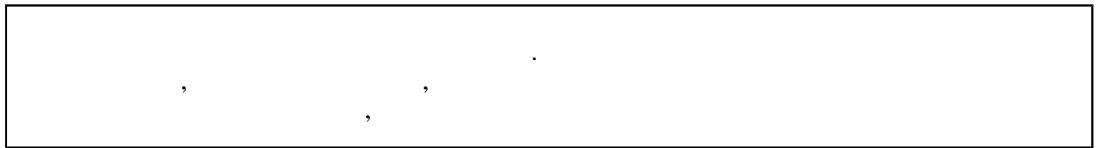
1 1  
1



		581 ( )	291	465
--	--	---------	-----	-----

1.3. \_\_\_\_\_.

**ВНИМАНИЕ !!!**



Kripsol Karpa KA-450

4.2 15150.

Kripsol Karpa KA-450

1

1

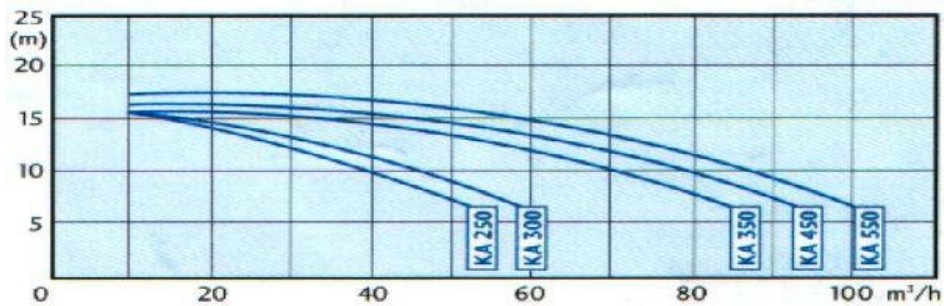
		~ 380
	%	± 4%
		4.04
		6.75
	-	I
	-	F
	-	IP 54
		26.8
	°	+10 +35
	%	60
	°	45
		2,5
		90
		90

Kripsol Karpa KA-450

2

1

1

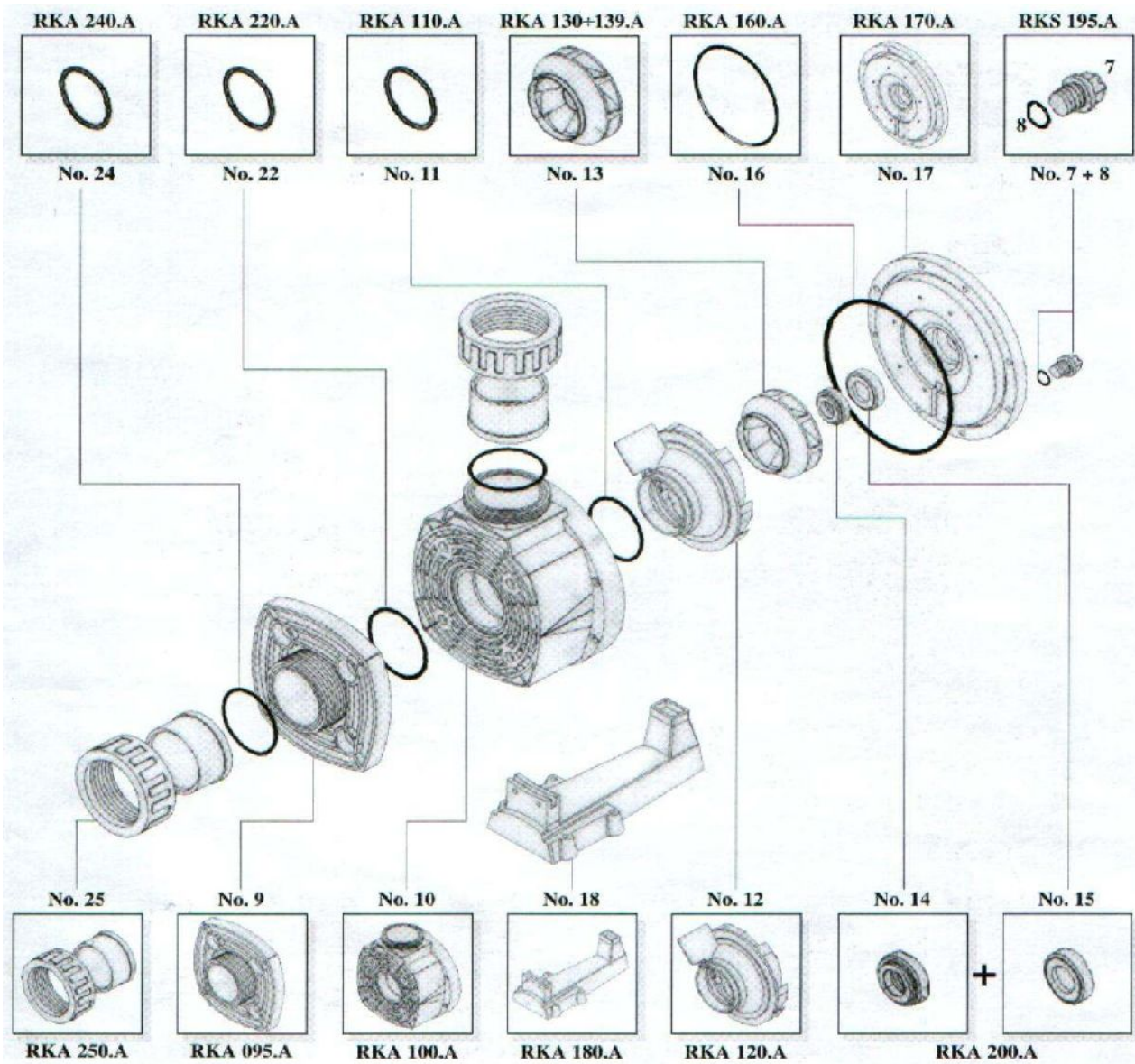


		6	8	10	12	14	16	18	20
( )	. /	94	88	78	68	55	24	-	-

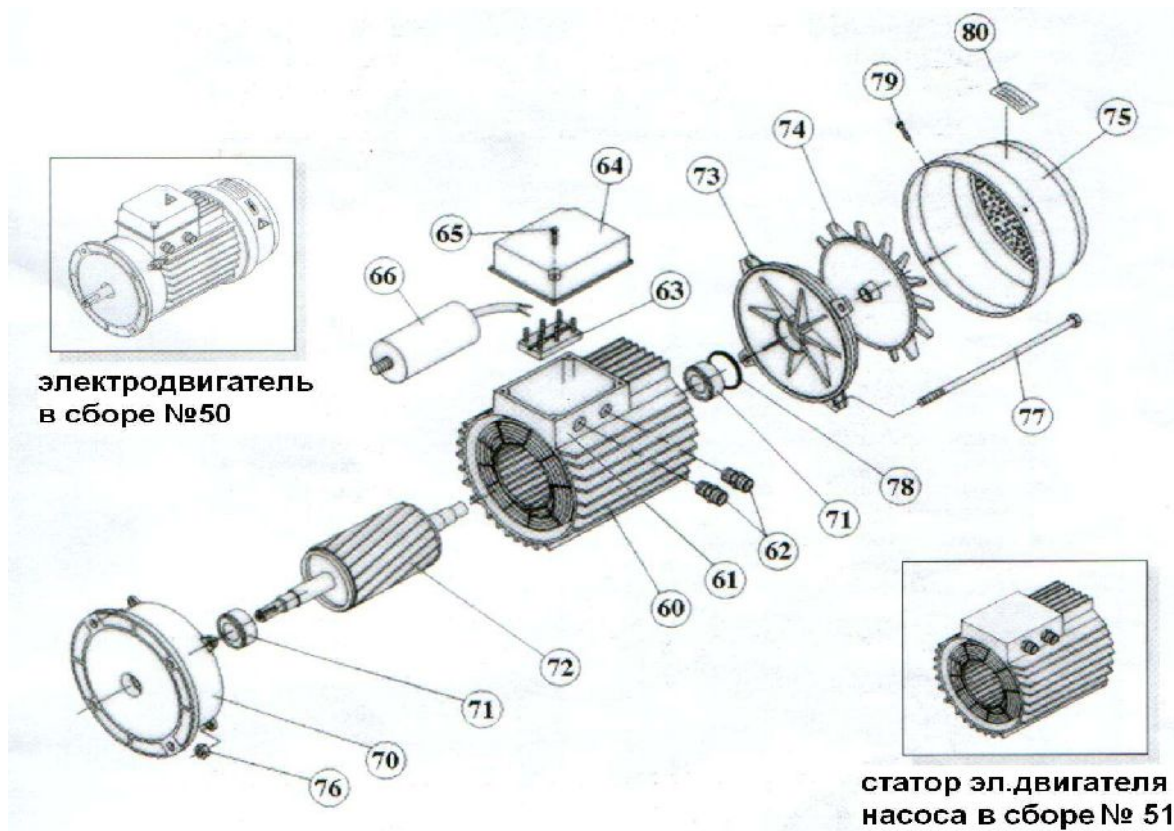
1.4. \_\_\_\_\_

Kripsol Karpa KA-450

4



7+8	OK,NK,KS,KAP Kripsol RKS 195.A/7
9	KA Kripsol RKA 095.A
10	KA, KAP Kripsol RKA 100.A
11	- KA, KAP Kripsol RKA 110.A
12	KA/KAP Kripsol RKA 120.A
13	KA-450 Kripsol RKA 137.A
14+15	( .2 ) KA/KAP Kripsol RKA 200.A
16	( ) KA/KAP Kripsol RKA 160.A
17	( ) / Kripsol RKA 170.A
18	KA,KAP Kripsol RKA 180.A
22	- KA/KAP Kripsol RKA 220.A
24	- , Kripsol RKA 240.A
25	, .90 Kripsol RKA 250.A



50	КА/КАР-450 (380 ) Kripsol (5046.A)
51	КА/КАР-450 (380 ) Kripsol (5146.A)
60	( )
61	( )
62	( )
63	( )
64	КА/КАР-350,450 ( -90) Kripsol (6407. )
65	
66	
70	КА/КАР-250,300,350,450 ( -90) Kripsol (7005.A)
71	( ) . КА/КАР-250,300,350,450 ( -90) Kripsol 6205-ZZ
71	( . ) . .KS,КА/КАР( -80)( . )КА/КАР( -90) Kripsol 6204-ZZ
72	КА/КАР-450 (380 ) Kripsol (7246. )
73	КА/КАР-250,300,350,450 ( -90) Kripsol (7304.A)
74	КА,КАР-250,300,350,450 ( -90) Kripsol (7404.A)
75	( ) КА/КАР-250,300,350,450 ( -90) Kripsol (7504.A)
76	
77	КА/КАР
78	КА/КАР
79	КА/КАР
80	

- 1.5. \_\_\_\_\_  
 Kripsol Karpa KA-450  
 ( ) ( 13 .2) ( 10 .2)  
 ( 12 .2).

( 10 )

( )

1.6. \_\_\_\_\_

**BHITMAHIIE !!!**



		585	325	440

2.

2.1. \_\_\_\_\_

Kripsol Karpa KA-450



— ;

— ; 300 ;

— ;

— ;

— Kripsol Karpa KA-450 ;

2.2. \_\_\_\_\_

Kripsol Karpa KA-450

( ), ,

- 12.1.019-79
- 12.1.013-78
- 12.3.032-84
- 12.3.019-80
- 12.1.030-81
- 153-34.0-03.150-00.

12.3.006-75

12.1.005-88

12.3.009-76

12-03-01.

12-04-02.

12.1.004-91

01-93.

22.0.01-94.

22.3.03-94.

I.

2.



2.3. \_\_\_\_\_.

Kripsol Karpa

KA-450

\_\_\_\_\_ :

- \_\_\_\_\_ ( \_\_\_\_\_ )  
- \_\_\_\_\_  
- \_\_\_\_\_  
- \_\_\_\_\_ 1%  
- \_\_\_\_\_ Kripsol Karpa KA-450  
- \_\_\_\_\_ 60%,  
+10 +35

- \_\_\_\_\_ Kripsol Karpa KA-450 :  
- \_\_\_\_\_ Kripsol Karpa KA-450  
- \_\_\_\_\_ Kripsol Karpa KA-450

2

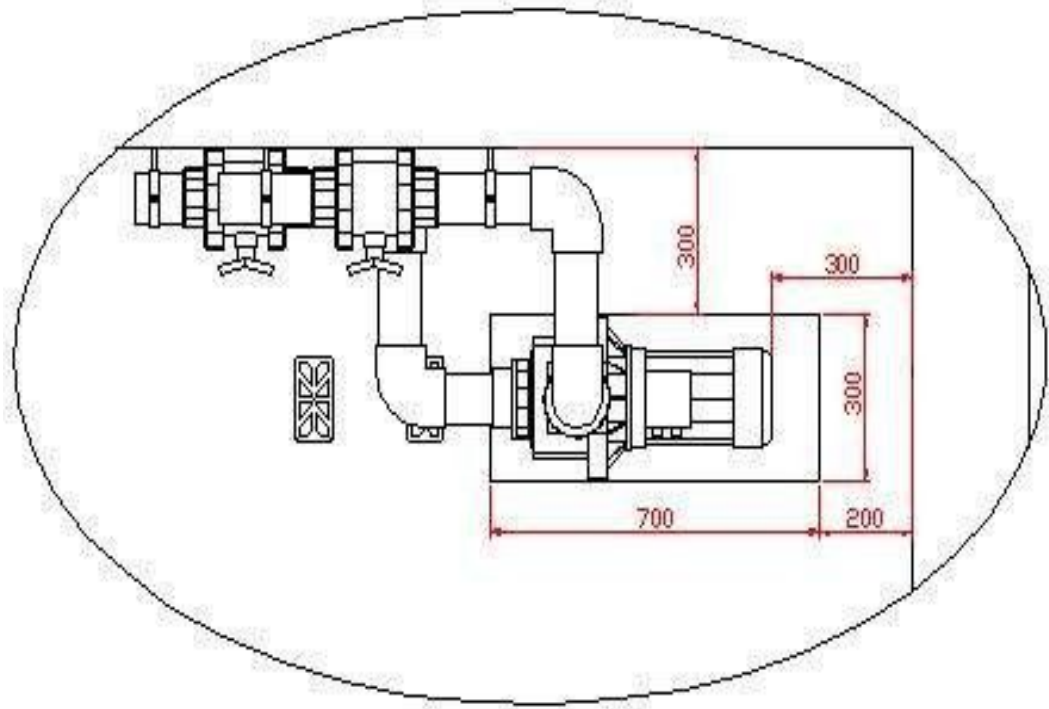
2.4. \_\_\_\_\_.

Kripsol Karpa KA-450 :

- \_\_\_\_\_ Kripsol Karpa KA-450 ( \_\_\_\_\_ )  
( \_\_\_\_\_ 3 ) ( \_\_\_\_\_ )  
100

4.

4

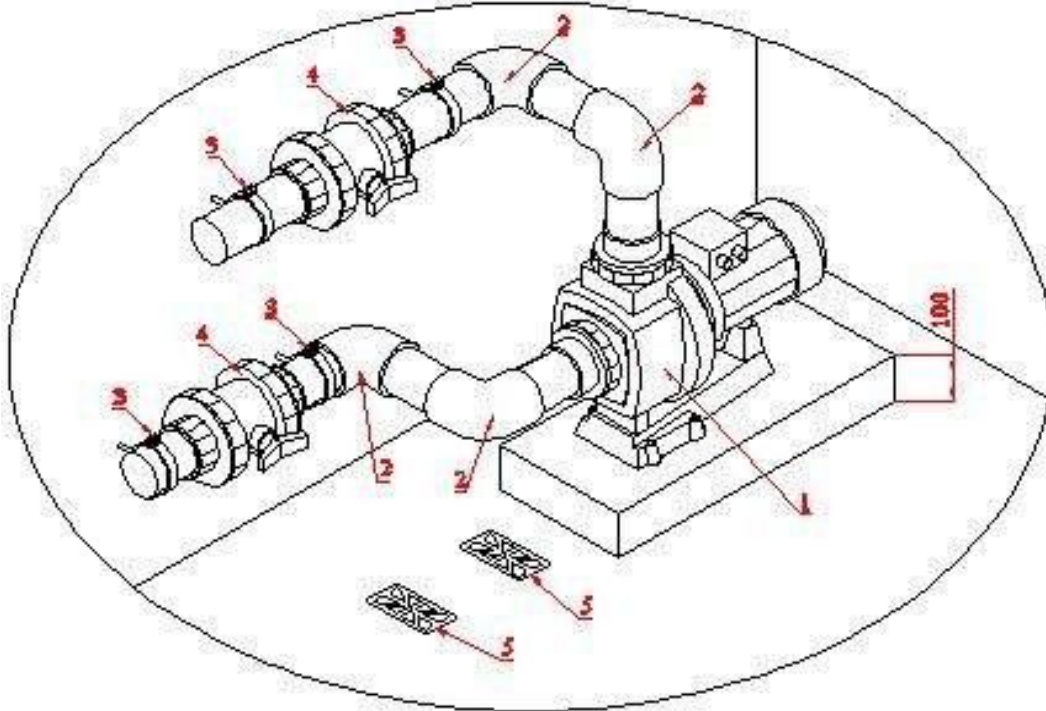


- Kripsol Karpa KA-450 ( )

- Koral KS-150. Kripsol

- Kripsol Karpa KA-450 5.

5



5

1	( 78 3/ 380 ) Kripsol Karpa KA-450
2	90 . .90 Coraplast (7101090)
3	.90
4	.90 Coraplast (1010090)
5	( )

( , , )

- Kripsol Karpa KA-450 (380 )

1.  
4 1.5 2,





3.

3.1. \_\_\_\_\_

Kripsol Karpa KA-450

**BHITMAHIE !!!**

Kripsol Karpa KA-450  
2.5 2.6



Kripsol Karpa KA-450



- Kripsol Karpa KA-450  
 .1.2. ;  
 - Kripsol Karpa KA-450  
 4.2 15150 .1.2. ;  
 - Kripsol Karpa KA-450  
 51232-98 2.1.4.559-96 ;  
 - Kripsol Karpa KA-450 6 12  
 ( );  
 - Kripsol Karpa KA-450 4 ;  
 - Kripsol Karpa KA-450  
 ;  
 - Kripsol Karpa KA-450  
 ;  
 - Kripsol Karpa KA-450 ( ;  
 );  
 - Kripsol Karpa KA-450 ,  
 ;  
 - Kripsol Karpa KA-450  
 ;  
 - Kripsol Karpa KA-450 ( );  
 ( ;  
 - Kripsol Karpa KA-450 ( );

3.2. \_\_\_\_\_

Kripsol Karpa KA-450  
+5°C 60%.  
Kripsol Karpa KA-450  
Kripsol Karpa KA-450

24-  
Kripsol Karpa KA-450 .2

3.3. \_\_\_\_\_

	.1.2.	
	( , )	( : )
		3
	.1.2.	
	( , )	
	/	

3.4. \_\_\_\_\_.

12.3.019-80, "

Kripsol Karpa KA-450

", "

".



!		Kripsol Karpa KA-450
---	--	----------------------

3.5. \_\_\_\_\_.

4.

4.1. \_\_\_\_\_.

Kripsol Karpa KA-450

- \_\_\_\_\_ ;
- \_\_\_\_\_ ;
- \_\_\_\_\_ ;
- \_\_\_\_\_ ;
- \_\_\_\_\_ ;
- \_\_\_\_\_ ;



\_\_\_\_\_ : Kripsol Karpa KA-450

4.2. \_\_\_\_\_.

( )

. 2.2. . 3.4.

4.3. \_\_\_\_\_.



! \_\_\_\_\_ Kripsol Karpa KA-450

. 2.4.

4.4. \_\_\_\_\_.

Kripsol Karpa KA-450  
)

. 2.5.

(

4.5. \_\_\_\_\_.

- . 1.2. ( ) ;
- . 2.4. ;
- \_\_\_\_\_ . 1.2. . 6.

5.

5.1. \_\_\_\_\_.

**BHITMAHIE !!!**

\_\_\_\_\_

5.2. \_\_\_\_\_.

. 2.2. . 3.4.

Kripsol Karpa KA-450

6.

+10° +35°

60%



[Empty rectangular box]

7.

Kripsol Karpa KA-450

8.

Kripsol Karpa KA-450

Kripsol Karpa KA-450

9.

Kripsol Karpa KA-450

\_\_\_\_\_

\_\_\_\_\_

«\_\_\_\_\_» \_\_\_\_\_ 20\_\_\_\_\_

10.

\_\_\_\_\_

«\_\_\_\_\_» \_\_\_\_\_ 20\_\_\_\_\_

1.

2.

3.

12( )

4.

30

( )

90( )

5.

( )

6.

7.

8.

8.1.

