

**Kripsol Karpa KA-350**  
(70 3/ 380 )



1.

1.1. \_\_\_\_\_.

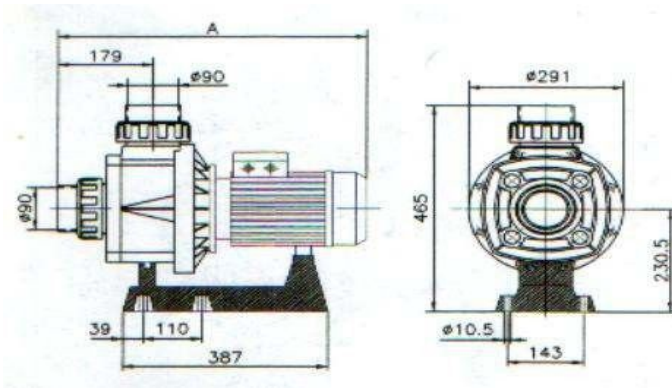
Kripsol Karpa KA-350

\_\_\_\_\_ : \_\_\_\_\_ ( \_\_\_\_\_ , \_\_\_\_\_ , \_\_\_\_\_ )  
 \_\_\_\_\_ ;

1.2 \_\_\_\_\_.

Kripsol Karpa KA-350

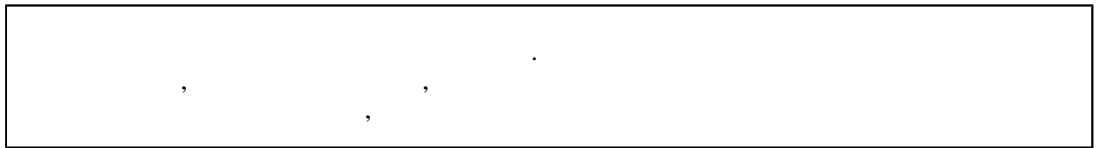
1 1  
1



|  |  |         |     |     |
|--|--|---------|-----|-----|
|  |  |         |     |     |
|  |  | 581 ( ) | 291 | 465 |

1.3. \_\_\_\_\_.

**ВНИМАНИЕ !!!**



Kripsol Karpa KA-350

4.2 15150.

Kripsol Karpa KA-350

1

1

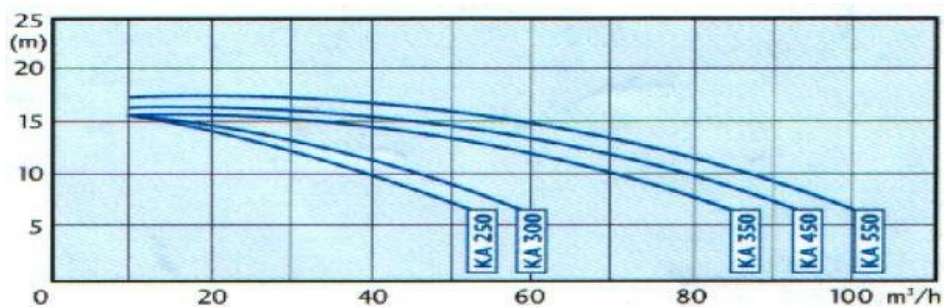
|  |   |         |
|--|---|---------|
|  |   |         |
|  |   | ~ 380   |
|  | % | ± 4%    |
|  |   | 3,26    |
|  |   | 6       |
|  | - | I       |
|  | - | F       |
|  | - | IP 54   |
|  |   | 24,8    |
|  | ° | +10 +35 |
|  | % | 60      |
|  | ° | 45      |
|  |   | 2,5     |
|  |   | 90      |
|  |   | 90      |

Kripsol Karpa KA-350

2

1

1



|     |   |    |    |    |    |    |    |    |    |
|-----|---|----|----|----|----|----|----|----|----|
|     |   | 6  | 8  | 10 | 12 | 14 | 16 | 18 | 20 |
| ( ) | . | 86 | 78 | 70 | 60 | 45 | 12 | -  | -  |

1.4. \_\_\_\_\_

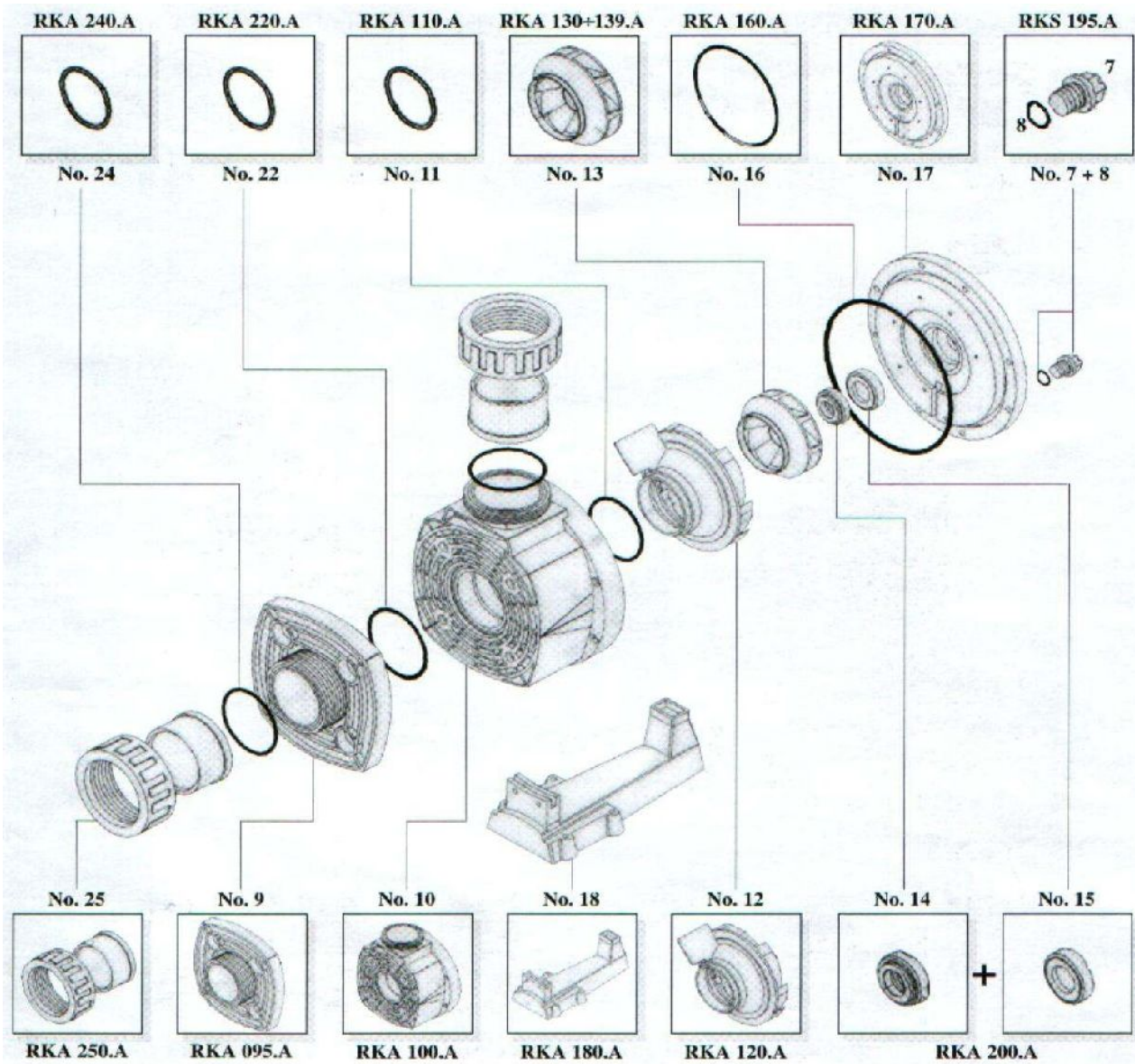
Kripsol Karpa KA-350

2 3,

3

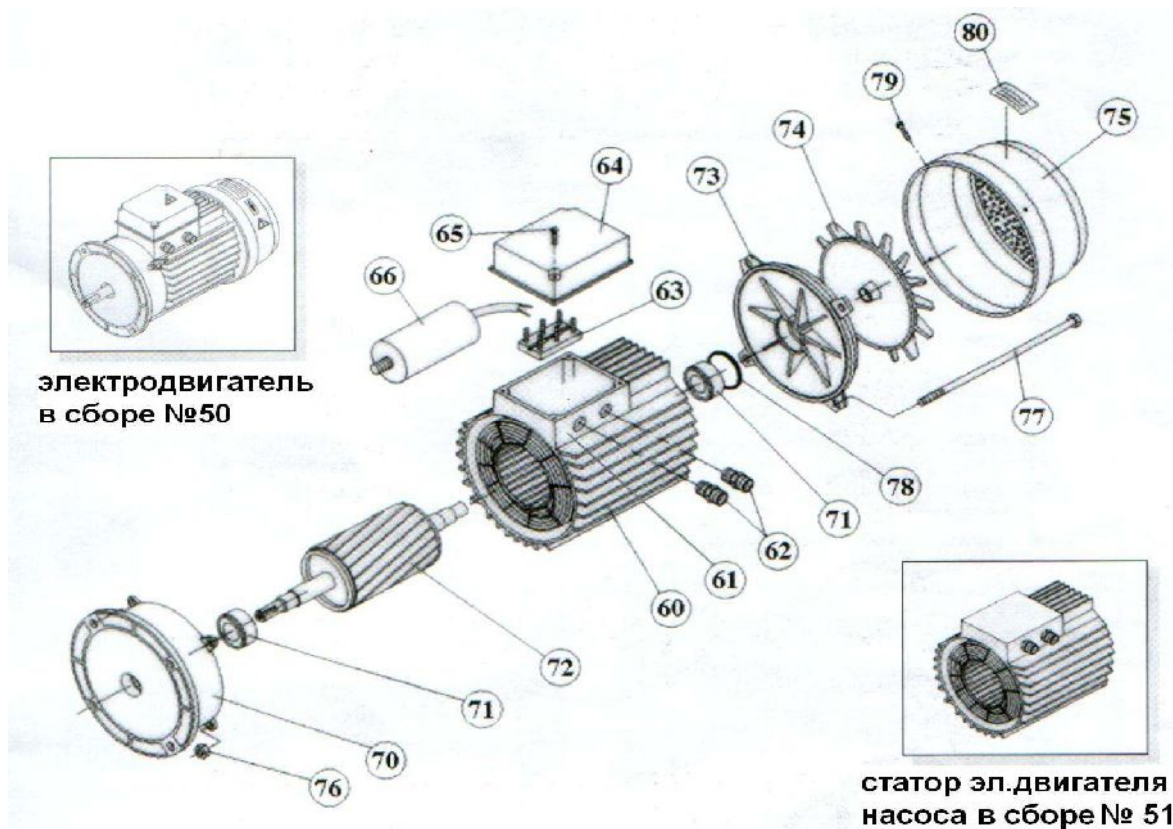
4

2



3

|       |                                  |
|-------|----------------------------------|
| 7+8   | OK,NK,KS,KAP Kripsol RKS 195.A/7 |
| 9     | KA Kripsol RKA 095.A             |
| 10    | KA, KAP Kripsol RKA 100.A        |
| 11    | - KA, KAP Kripsol RKA 110.A      |
| 12    | KA/KAP Kripsol RKA 120.A         |
| 13    | KA,KAP-350 Kripsol RKA 134.A     |
| 14+15 | ( .2 ) KA/KAP Kripsol RKA 200.A  |
| 16    | ( ) KA/KAP Kripsol RKA 160.A     |
| 17    | ( ) / Kripsol RKA 170.A          |
| 18    | KA,KAP Kripsol RKA 180.A         |
| 22    | - KA/KAP Kripsol RKA 220.A       |
| 24    | - , Kripsol RKA 240.A            |
| 25    | , .90 Kripsol RKA 250.A          |



4

|    |   |
|----|---|
| 50 | КА/КАР-350 (380 ) Kripsol (5045.A)                          |
| 51 | КА/КАР-350 (380 ) Kripsol (5145.A)                          |
| 60 | ( )   |
| 61 | ( )   |
| 62 | ( )   |
| 63 | ( )   |
| 64 | КА/КАР-350,450 ( -90) Kripsol (6407. )                      |
| 65 |   |
| 66 |   |
| 70 | КА/КАР-250,300,350,450 ( -90) Kripsol (7005.A)              |
| 71 | 6205-ZZ ( ) . КА/КАР-250,300,350,450 ( -90) Kripsol         |
| 71 | ( . ) . .KS,КА/КАР( -80)( . )КА/КАР( -90<br>Kripsol 6204-ZZ |
| 72 | КА/КАР-350 (380 ) Kripsol (7245. )                          |
| 73 | КА/КАР-250,300,350,450 ( -90) Kripsol (7304.A)              |
| 74 | КА,КАР-250,300,350,450 ( -90) Kripsol (7404.A)              |
| 75 | ( ) КА/КАР-250,300,350,450 ( -90) Kripsol (7504.A)          |
| 76 |   |
| 77 | КА/КАР  |
| 78 | КА/КАР  |
| 79 | КА/КАР  |
| 80 |   |

1.5. \_\_\_\_\_

Kripsol Karpa KA-350

( )

( 13 .2)

( 10 .2)

( 12 .2).

( 10 )

( )

1.6. \_\_\_\_\_.

**BHIMAHIE !!!**



|  |  |     |     |     |
|--|--|-----|-----|-----|
|  |  |     |     |     |
|  |  | 585 | 325 | 440 |

2.

2.1. \_\_\_\_\_.

Kripsol Karpa KA-350



— ; 300 ; ;

— ;

— ;

— ;

— Kripsol Karpa KA-350 ;

2.2. \_\_\_\_\_.

Kripsol Karpa KA-350

( ), , :

- 12.1.019-79 .
- 12.1.013-78 .
- 12.3.032-84 .
- 12.3.019-80 .
- 12.1.030-81 .
- 153-34.0-03.150-00. ( )

12.3.006-75 .

12.1.005-88 .

12.3.009-76 .

12-03-01. I.

12-04-02. 2.

12.1.004-91 .

01-93. .

22.0.01-94. .

22.3.03-94. .

2.3. \_\_\_\_\_

Kripsol Karpa

KA-350

-

-

-

-

-

+10 +35

-

-

-

-

-

-

Kripsol Karpa KA-350 1%

60%,

Kripsol Karpa KA-350  
Kripsol Karpa KA-350

Kripsol Karpa KA-350

2

2.4. \_\_\_\_\_

Kripsol Karpa KA-350

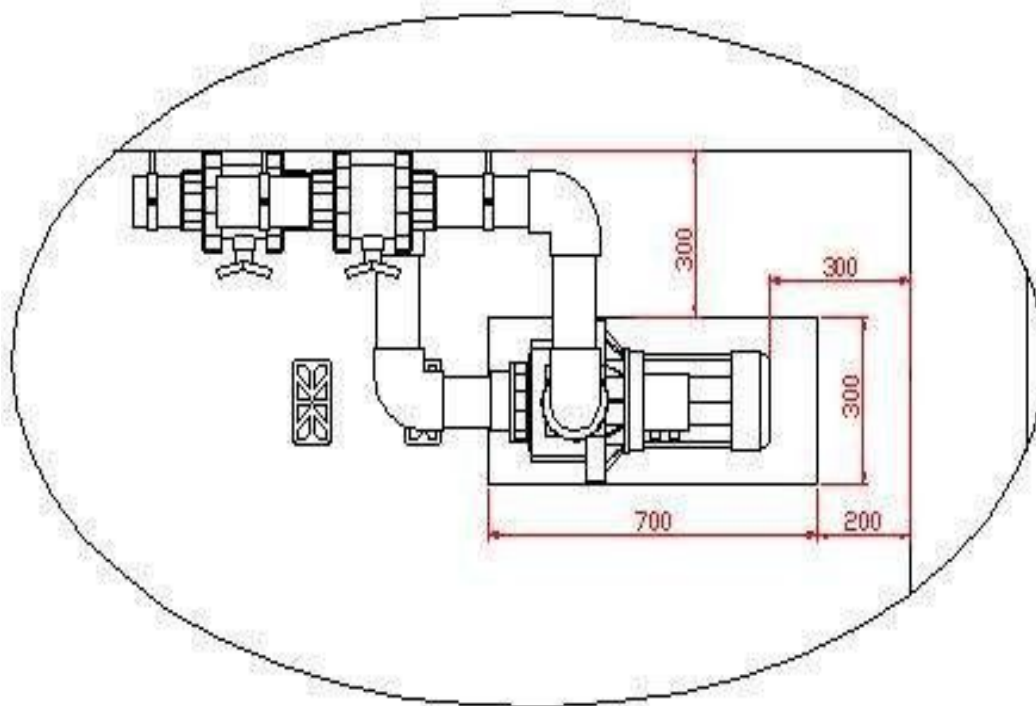
-

Kripsol Karpa KA-350 ( 3 )

100

4.

4

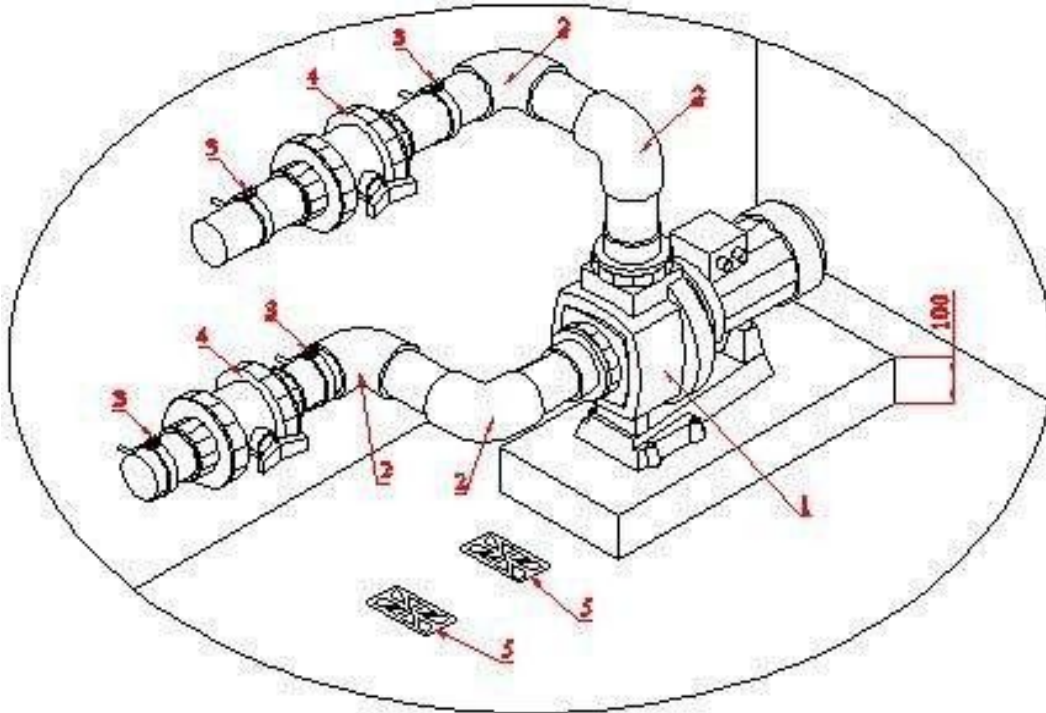


- Kripsol Karpa KA-350 ( )  
 ). ( )

- Koral KS-150. Kripsol

- Kripsol Karpa KA-350 5. 5.

5



5

|   |                                    |
|---|------------------------------------|
| 1 | ( 70 3/ 380 ) Kripsol Karpa KA-350 |
| 2 | 90 . .90 Coraplax (7101090)        |
| 3 | .90                                |
| 4 | .90 Coraplax (1010090)             |
| 5 | ( )                                |

- ( , )

- Kripsol Karpa KA-350 (380 ) 1.  
 4 1.5 2,





3.

3.1. \_\_\_\_\_

Kripsol Karpa KA-350

**ВНИМАНИЕ !!!**

Kripsol Karpa KA-350

.2.5 2.6



Kripsol Karpa KA-350



- Kripsol Karpa KA-350  
 .1.2. ;  
 - Kripsol Karpa KA-350  
 4.2 15150 .1.2. ;  
 - Kripsol Karpa KA-350  
 51232-98 2.1.4.559-96 ;  
 - Kripsol Karpa KA-350 6 12  
 ( );  
 - Kripsol Karpa KA-350 4 ;  
 - Kripsol Karpa KA-350  
 ;  
 - Kripsol Karpa KA-350  
 ;  
 - Kripsol Karpa KA-350 ( ;  
 - Kripsol Karpa KA-350 ,  
 ;  
 - Kripsol Karpa KA-350  
 ;  
 - Kripsol Karpa KA-350 ( );  
 - Kripsol Karpa KA-350 ( ;  
 - Kripsol Karpa KA-350 ( );

3.2. \_\_\_\_\_

Kripsol Karpa KA-350  
+5°C 60%

Kripsol Karpa KA-350

Kripsol Karpa KA-350

24-

Kripsol Karpa KA-350 .2

3.3. \_\_\_\_\_

|  |       |          |
|--|-------|----------|
|  |       |          |
|  | .1.2. |          |
|  | ( , ) | ( : . ). |
|  |       |          |
|  |       | 3        |
|  | .1.2. |          |
|  |       |          |
|  |       |          |
|  |       |          |
|  |       |          |
|  | ( , ) |          |
|  |       |          |
|  | /     |          |

3.4. \_\_\_\_\_

12.3.019-80, "

Kripsol Karpa KA-350

", "

".



! , , Kripsol Karpa KA-350 ,

3.5. \_\_\_\_\_

4.

4.1. \_\_\_\_\_.

Kripsol Karpa KA-350

- \_\_\_\_\_ ;
- \_\_\_\_\_ ;
- \_\_\_\_\_ ;
- \_\_\_\_\_ ;
- \_\_\_\_\_ ;
- \_\_\_\_\_ ;



\_\_\_\_\_ Kripsol Karpa KA-350

4.2. \_\_\_\_\_.

( )

.2.2. .3.4.

4.3. \_\_\_\_\_.



\_\_\_\_\_ Kripsol Karpa KA-350

.2.4.

4.4. \_\_\_\_\_.

Kripsol Karpa KA-350  
)

.2.5.

(

4.5. \_\_\_\_\_.

- .1.2. ( ) ;
- .2.4. ;
- \_\_\_\_\_ .1.2. .6.

5.

5.1. \_\_\_\_\_.

**BHITMAHIIE !!!**

\_\_\_\_\_

5.2. \_\_\_\_\_.

.2.2. .3.4.

Kripsol Karpa KA-350

6. +10° +35°

60%



Empty rectangular box

7. Kripsol Karpa KA-350

Kripsol Karpa KA-350  
Kripsol Karpa KA-350

8.

9.

Kripsol Karpa KA-350

«\_\_\_\_\_» \_\_\_\_\_ 20\_\_\_\_\_

10.

«\_\_\_\_\_» \_\_\_\_\_ 20\_\_\_\_\_

1.

2.

3.

4.

5.

6.

7.

8.

8.1.

8.2.

30

90( )

8.3.

9.

9.1.

9.2.

10.

11.

12.

13.

14.

15.

16.

17.

18.

19.

( )

14 ( )  
90 ( )