

Kripsol Karpa KA-300
(48 3/ 380)



1.

1.1. _____.

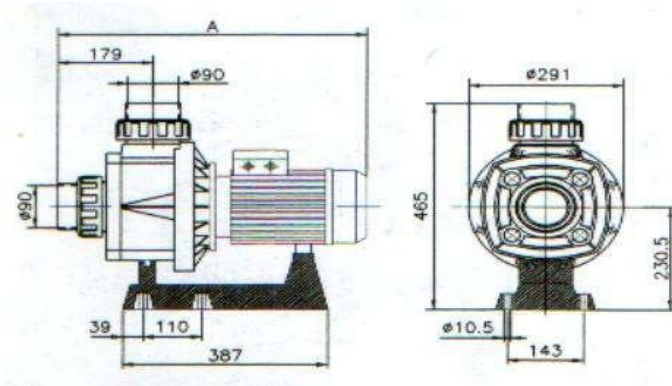
Kripsol Karpa KA-300

_____ : _____ (_____ , _____ , _____)
 _____ ;

1.2 _____.

Kripsol Karpa KA-300

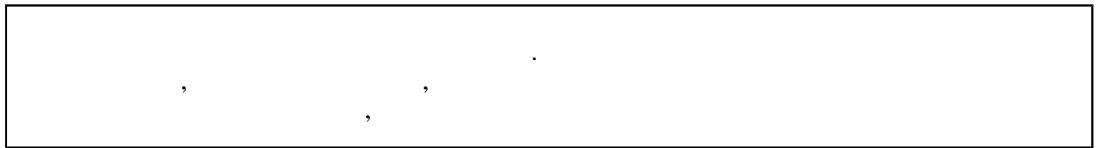
1 1
1



		540 ()	291	465
--	--	---------	-----	-----

1.3. _____.

ВНИМАНИЕ !!!



Kripsol Karpa KA-300

4.2

15150.

Kripsol Karpa KA-300

1

1

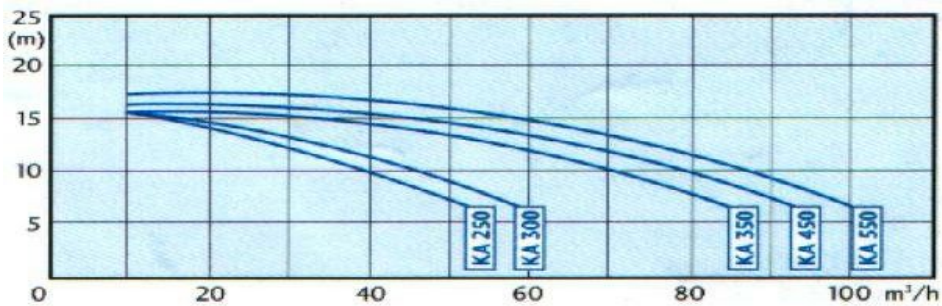
		~ 380
	%	± 4%
		2,76
		5,1
	-	I
	-	F
	-	IP 54
		21,5
	°	+10 +35
	%	60
	°	45
		2,5
		90
		90

Kripsol Karpa KA-300

2

1

1



		6	8	10	12	14	16	18	20
()	. /	60	54	45	37	25	10	-	-

1.4. _____

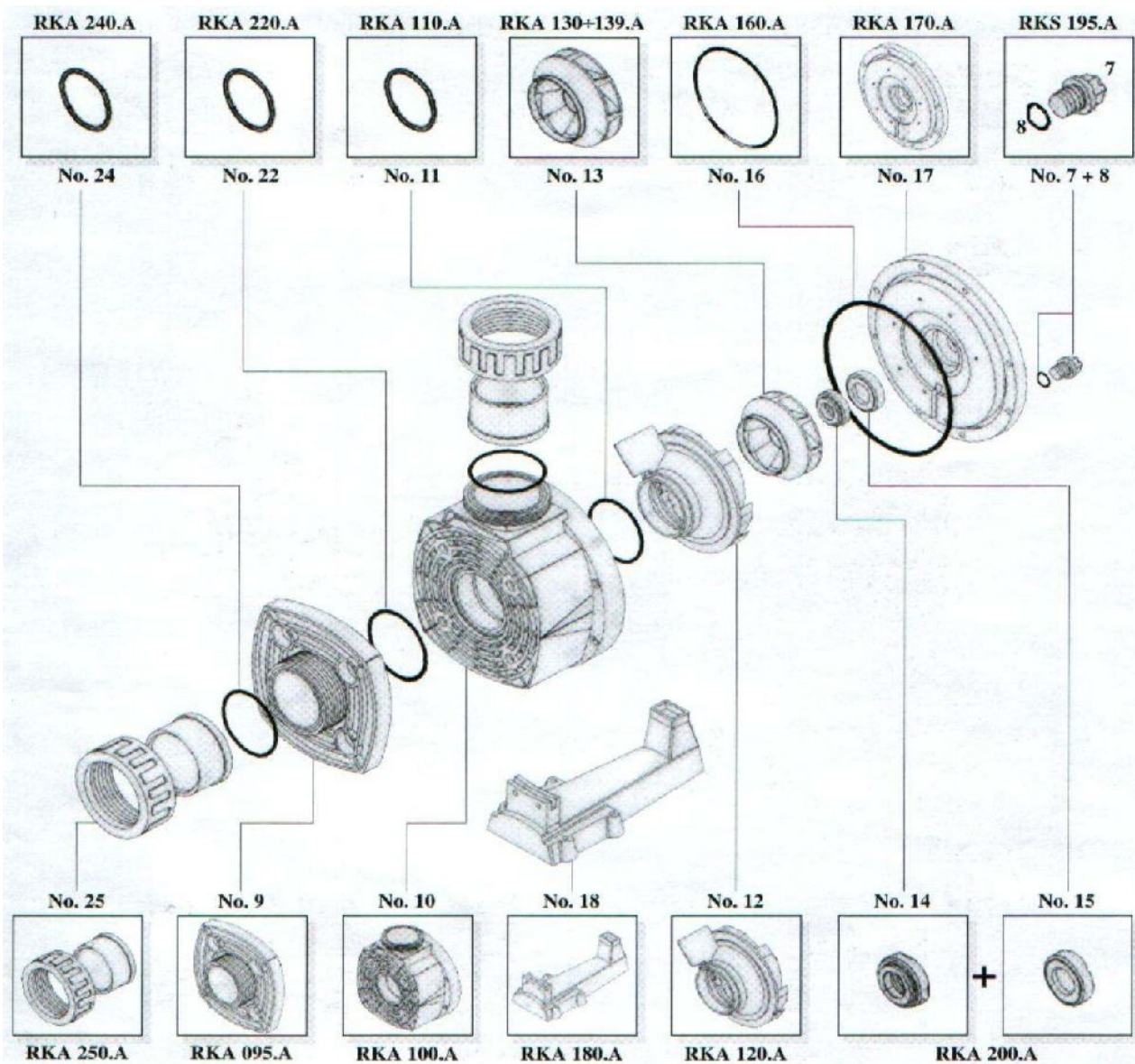
Kripsol Karpa KA-300

2 3,

3

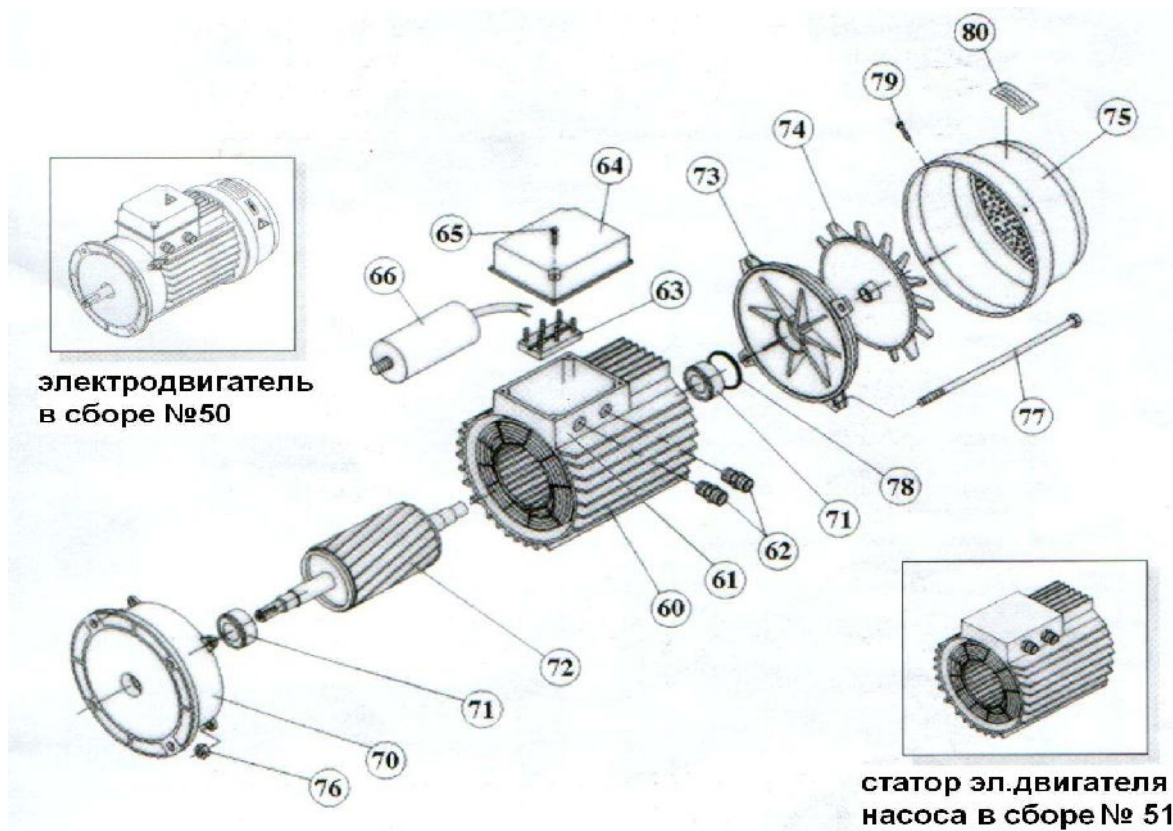
4

2



3

7+8	OK,NK,KS,KAP Kripsol RKS 195.A/7
9	KA Kripsol RKA 095.A
10	KA, KAP Kripsol RKA 100.A
11	- KA, KAP Kripsol RKA 110.A
12	KA/KAP Kripsol RKA 120.A
13	KA-300 Kripsol RKA 133.A
14+15	(.2) KA/KAP Kripsol RKA 200.A
16	() KA/KAP Kripsol RKA 160.A
17	() / Kripsol RKA 170.A
18	KA,KAP Kripsol RKA 180.A
22	- KA/KAP Kripsol RKA 220.A
24	- , Kripsol RKA 240.A
25	, .90 Kripsol RKA 250.A



50	КА/КАР-300 (380) Kripsol (5044.A)
51	КА/КАР-250 (380) Kripsol (5144.A)
60	()
61	()
62	()
63	()
64	(6405.) KS-150, 200, 300 КА/КАР-250,300 (-80) Kripsol
65	
66	
70	(7004.A) KS-150, 200, 300 КА/КАР-250,300 (-80) Kripsol
71	() . .KS,КА/КАР(-80) ()КА/КАР(-90) Kripsol 6204-ZZ
71	() . KS-150, 200, 300 КА/КАР-250,300 (-80) Kripsol 6203-ZZ
72	КА/КАР-300 (380) Kripsol (7244.)
73	KS, КА/КАР-250,300 (-80) Kripsol (7303.A)
74	(7403.A) KS-150, 200, 300, КА,КАР-250, 300 (-80) Kripsol
75	KS-150, 200, 300 КА/КАР-250,300 (-80) Kripsol (7503.A)
76	
77	КА/КАР
78	КА/КАР
79	КА/КАР
80	

1.5. _____

Kripsol Karpa KA-300
()

(13) .2)

(10) .2)

(12) .2).

(10)

()

1.6. _____.

ВНИМАНИЕ !!!



		585	325	440
--	--	-----	-----	-----

2.

2.1. _____.

Kripsol Karpa KA-300



300

Kripsol Karpa KA-300

2.2. _____.

Kripsol Karpa KA-300

(), ,

- 12.1.019-79
- 12.1.013-78
- 12.3.032-84
- 12.3.019-80
- 12.1.030-81
- 153-34.0-03.150-00.

12.3.006-75

12.1.005-88

12.3.009-76

12-03-01.

12-04-02.

12.1.004-91

01-93.

22.0.01-94.

22.3.03-94.

I.

2.

2.3. _____

Kripsol Karpa

KA-300

- _____ (_____)
 - _____
 - _____
 - _____ 1%
 - Kripsol Karpa KA-300
 - _____ 60%,
 +10 +35

Kripsol Karpa KA-300 :
 Kripsol Karpa KA-300
 Kripsol Karpa KA-300

2

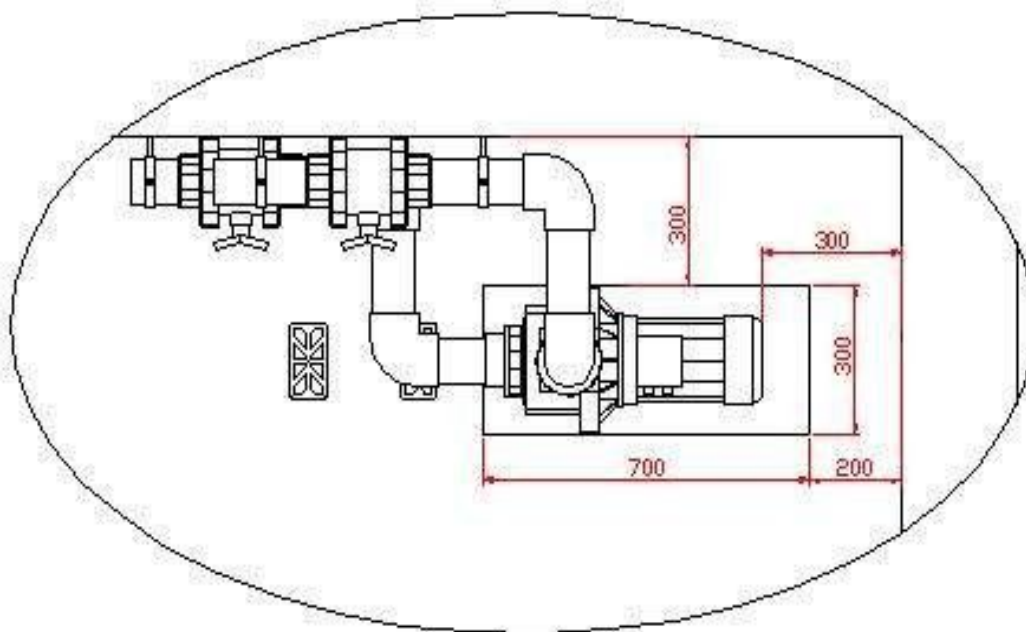
2.4. _____

Kripsol Karpa KA-300

- Kripsol Karpa KA-300 (_____)
 (_____ 3) _____
 100

4.

4

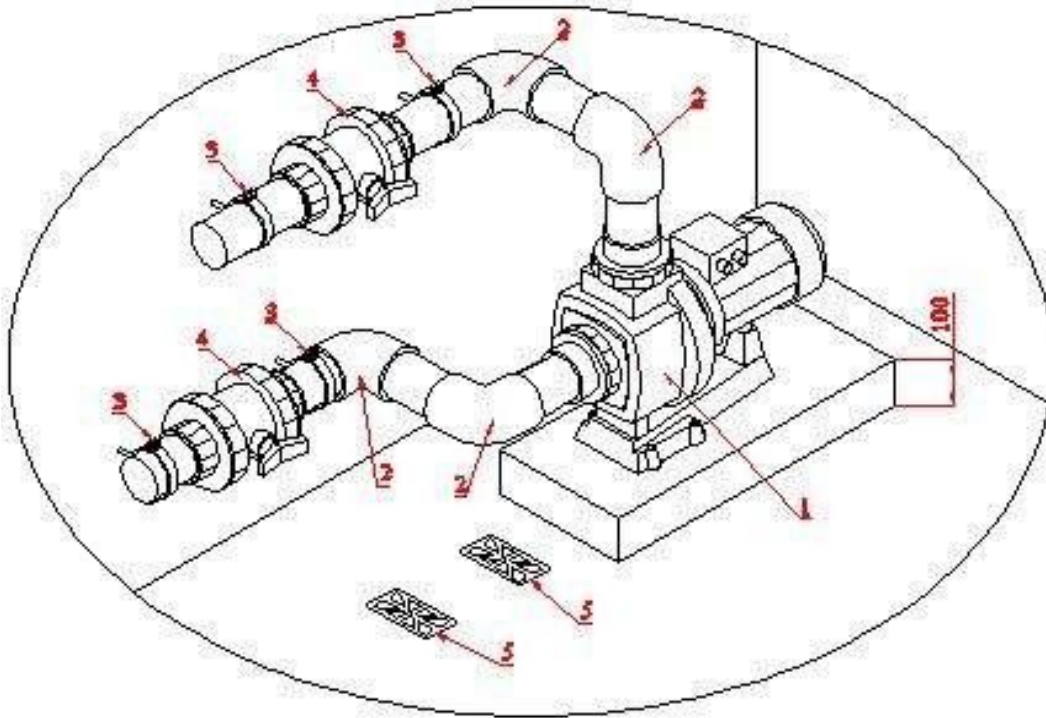


- Kripsol Karpa KA-300 ()

- Koral KS-150. Kripsol

- Kripsol Karpa KA-300 5.

5

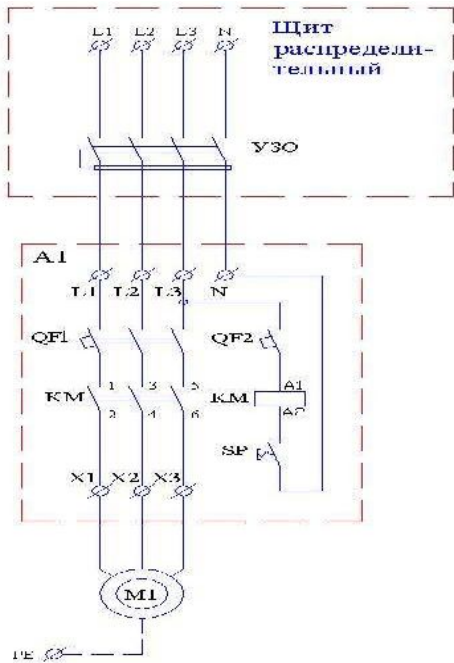


5

1	(48 3/ 380) Kripsol Karpa KA-300
2	90 . . 90 Coraplax (7101090)
3	. 90
4	. 90 Coraplax (1010090)
5	()

- ()

- Kripsol Karpa KA-300 (380) 1.
4 1.5 2,



1	380-05 *
1	KA/KAP-300 (380) Kripsol (5044.A)
QF1	3- . 10A
QF2	1- . 6A
	B-7-40-00 14A
S	

*
380-05

380-05 .

Kripsol Kapa KA-300

- ;
 - ;
 - ;
 - ;
 - ;
 - ;
 - ;
 - ;
 - ;
 - ;

2.5. _____
 Kripsol Kapa KA-300

- ;
 - ;
 - ;
 - ;
 - ;
 - ;
 - ;
 - ;
 - ;
 - ;



2.6. _____

- ;
 - ;
 - ;
 - ;
 - ;
 - ;
 - ;
 - ;
 - ;
 - ;

1.2. ,



3.

3.1. _____

Kripsol Karpa KA-300

BHITMAHITTE !!!

Kripsol Karpa KA-300

. 2.5 2.6



Kripsol Karpa KA-300



- Kripsol Karpa KA-300

.1.2.

- Kripsol Karpa KA-300

4.2 15150

.1.2.

- Kripsol Karpa KA-300

51232-98

2.1.4.559-96

- Kripsol Karpa KA-300

6

12

(

);

- Kripsol Karpa KA-300

4

- Kripsol Karpa KA-300

- Kripsol Karpa KA-300

- Kripsol Karpa KA-300

);

- Kripsol Karpa KA-300

- Kripsol Karpa KA-300

- Kripsol Karpa KA-300

(

);

- Kripsol Karpa KA-300

(

- Kripsol Karpa KA-300

(

);

3.2. _____

Kripsol Karpa KA-300

+5°C

60%.

Kripsol Karpa KA-300

Kripsol Karpa KA-300

24-

Kripsol Karpa KA-300

.2

3.3. _____

	.1.2.	
	(,)	(: .). , .
		3 , .
	.1.2.	
	(,)	
	/	

3.4. _____

12.3.019-80, "

Kripsol Karpa KA-300

", "



!		Kripsol Karpa KA-300
---	--	----------------------

3.5. _____

4.

4.1. _____.

Kripsol Karpa KA-300

- _____ ;
- _____ ;
- _____ ;
- _____ ;
- _____ ;
- _____ ;



_____ ; Kripsol Karpa KA-300

4.2. _____.

()

. 2.2. . 3.4.

4.3. _____.



! _____ Kripsol Karpa KA-300

. 2.4.

4.4. _____.

Kripsol Karpa KA-300
)

. 2.5.

(

4.5. _____.

- . 1.2. () ;
- . 2.4. ;
- _____ ;
- _____ . 1.2. . 6.

5.

5.1. _____.

ВНИМАНИЕ !!!

_____ ;

5.2. _____.

. 2.2. . 3.4.

Kripsol Karpa KA-300

6. +10° +35°

60%



Empty rectangular box with a border

7. Kripsol Karpa KA-300

Kripsol Karpa KA-300
Kripsol Karpa KA-300

8.

9.

Kripsol Karpa KA-300

«_____» _____ 20_____

10.

«_____» _____ 20_____

1.

2.

3.

12()

4.

30

()

90()

5.

()

6.

7.

8.

8.1.

8.2. , , , ,
8.3. . , ,
; ; : ,
9. : , , - . : ,
9.1. - , .8 ,
9.2. ()
10. .8
.9 ,
11. : , . . .
12.
13. .
14. - ,
, (.
15. , , ,
16. , 14() , 90()
17. ,
18. , ,
19. ()
