

Kripsol Karpa KA-250
(40 3/ 220)



1.

1.1. _____.

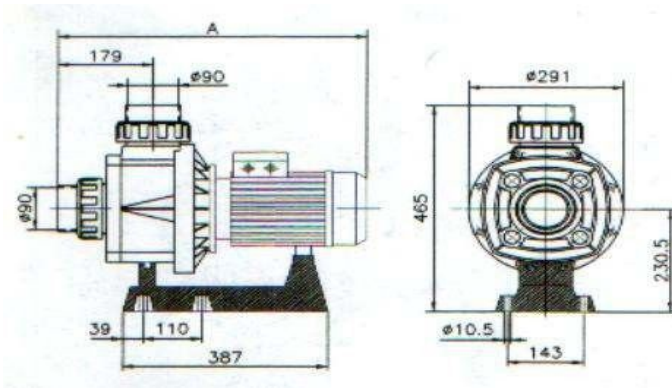
Kripsol Karpa KA-250

_____ : _____ (_____ , _____ , _____)
 _____ ;

1.2 _____.

Kripsol Karpa KA-250

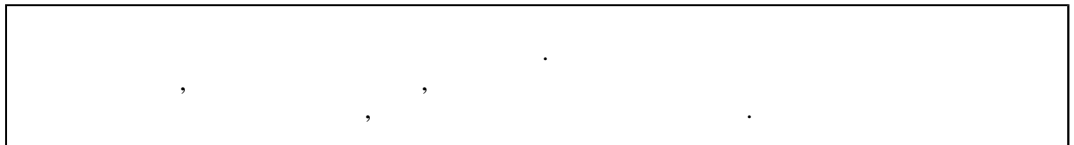
1 1
1



		540 ()	291	465
--	--	---------	-----	-----

1.3. _____.

ВНИМАНИЕ !!!



Kripsol Karpa KA-250

4.2 15150.

Kripsol Karpa KA-250

1

1

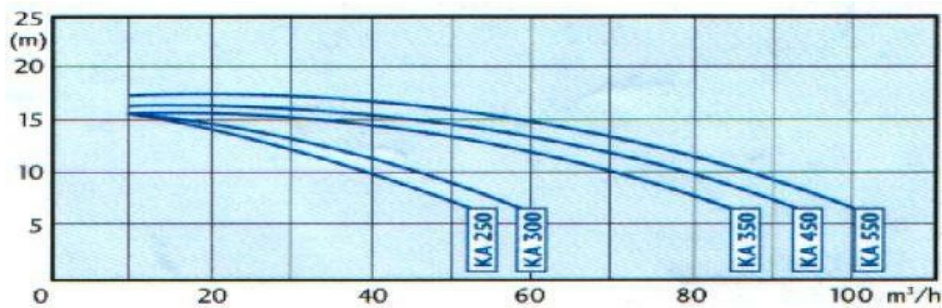
		~ 220
	%	± 5%
		2,3
		10
	-	I
	-	F
		IP 54
		20.8
	°	+10 +35
	%	60
	°	45
		2,5
		90
		90

Kripsol Karpa KA-250

2

1

1



		6	8	10	12	14	16	18	20
()	. /	54	47	40	31	20	-	-	-

1.4. _____

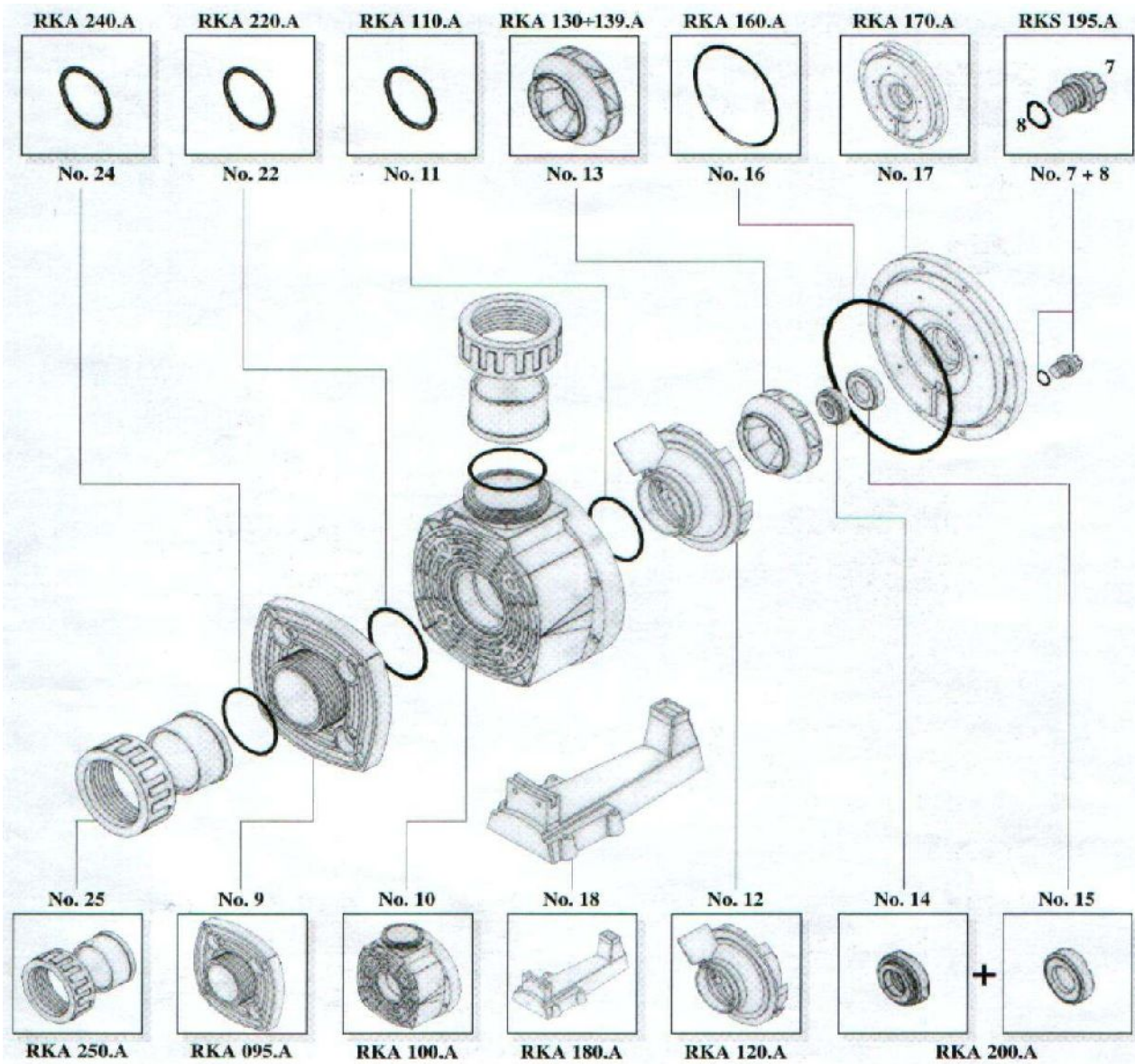
Kripsol Karpa KA-250

2 3,

3

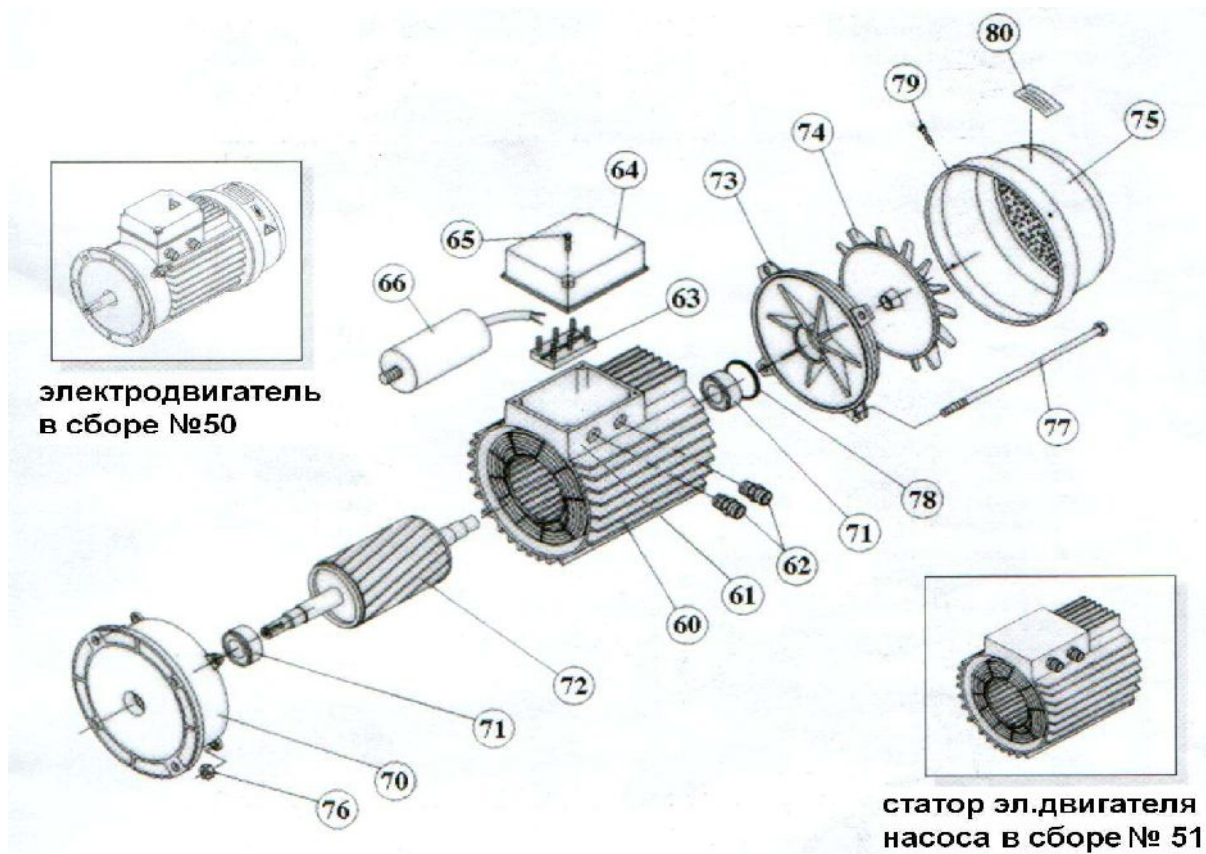
4

2



3

7+8		OK,NK,KS,KAP Kripsol RKS 195.A/7
9		KA Kripsol RKA 095.A
10		KA, KAP Kripsol RKA 100.A
11	-	KA, KAP Kripsol RKA 110.A
12		KA/KAP Kripsol RKA 120.A
13		KA,KAP-250 Kripsol RKA 130.A
14+15	(.2)	KA/KAP Kripsol RKA 200.A
16	()	KA/KAP Kripsol RKA 160.A
17	() /	Kripsol RKA 170.A
18		KA,KAP Kripsol RKA 180.A
22	-	KA/KAP Kripsol RKA 220.A
24	-	, Kripsol RKA 240.A
25	,	.90 Kripsol RKA 250.A



4

50	KA/KAP-250 (220) Kripsol (5041.A)
51	KA/KAP-250 (220) Kripsol (5141.A)
60	()
61	()
62	()
63	()
64	KS-150, 200, 300 KA/KAP-250,300 (-80) Kripsol (6405.)
65	
66	40 (6609.)
70	KS-150, 200, 300 KA/KAP-250,300 (-80) Kripsol (7004.A)
71	(.) . .KS,KA/KAP(-80) (.)KA/KAP(-90) Kripsol 6204-ZZ
71	() . KS-150, 200, 300 KA/KAP-250,300 (-80) Kripsol 6203-ZZ
72	KA/KAP-250 (220) (-80) Kripsol (7241.)
73	KS, KA/KAP-250,300 (-80) Kripsol (7303.A)
74	KS-150, 200, 300, KA,KAP-250, 300 (-80) Kripsol (7403.A)
75	KS-150, 200, 300 KA/KAP-250,300 (-80) Kripsol (7503.A)
76	
77	KA/KAP
78	KA/KAP
79	KA/KAP
80	

1.5.

Kripsol Karpa KA-250

()

(13 .2)

(10 .2)

(12 .2).

Kripsol Karpa KA-250

(10)

()

1.6. _____.

BHIMAHIE !!!



		585	325	440

2.

2.1. _____.

Kripsol Karpa KA-250

_____.



-	:			
-		300	;	
-			;	
-			;	
-			;	
-		Kripsol Karpa KA-250	;	

2.2. _____.

Kripsol Ninfa NK-25

(), ,

- 12.1.019-79 .
- 12.1.013-78 .
- 12.3.032-84 .
- 12.3.019-80 .
- 12.1.030-81 .
- 153-34.0-03.150-00. ()
- 12.3.006-75 .
- 12.1.005-88 .
- 12.3.009-76 .
- 12-03-01. I.
- 12-04-02. 2.
- 12.1.004-91 .
- 01-93. .
- 22.0.01-94. .
- 22.3.03-94. .

2.3. _____

Kripsol Karpa

KA-250

- _____ (_____)

- _____

- _____

- _____ 1%

- Kripsol Karpa KA-250

- _____ 60%,

- +10 +35

- Kripsol Karpa KA-250

- Kripsol Karpa KA-250

- Kripsol Karpa KA-250

- 24-

2.4. _____

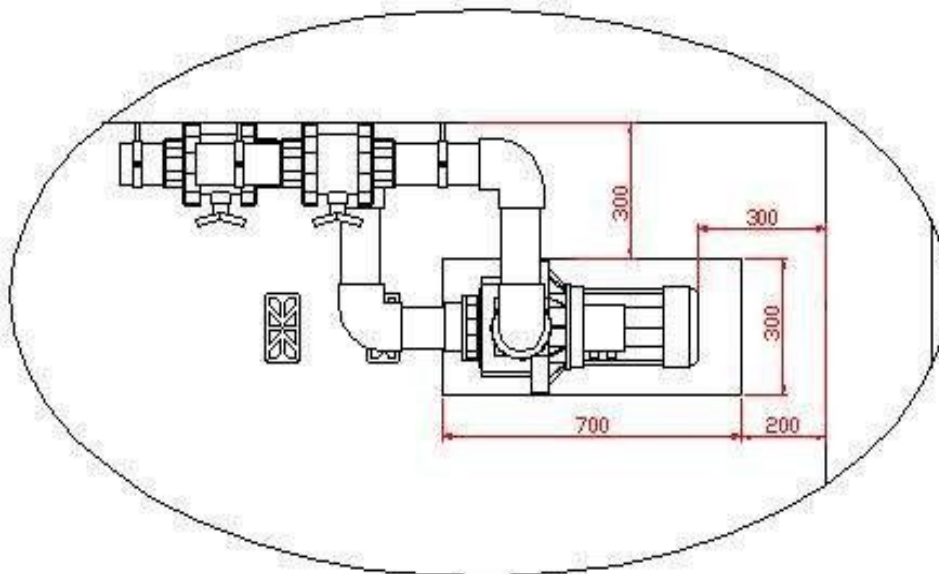
Kripsol Karpa KA-250

- Kripsol Karpa KA-250 (_____)

- _____ (3) _____ 100

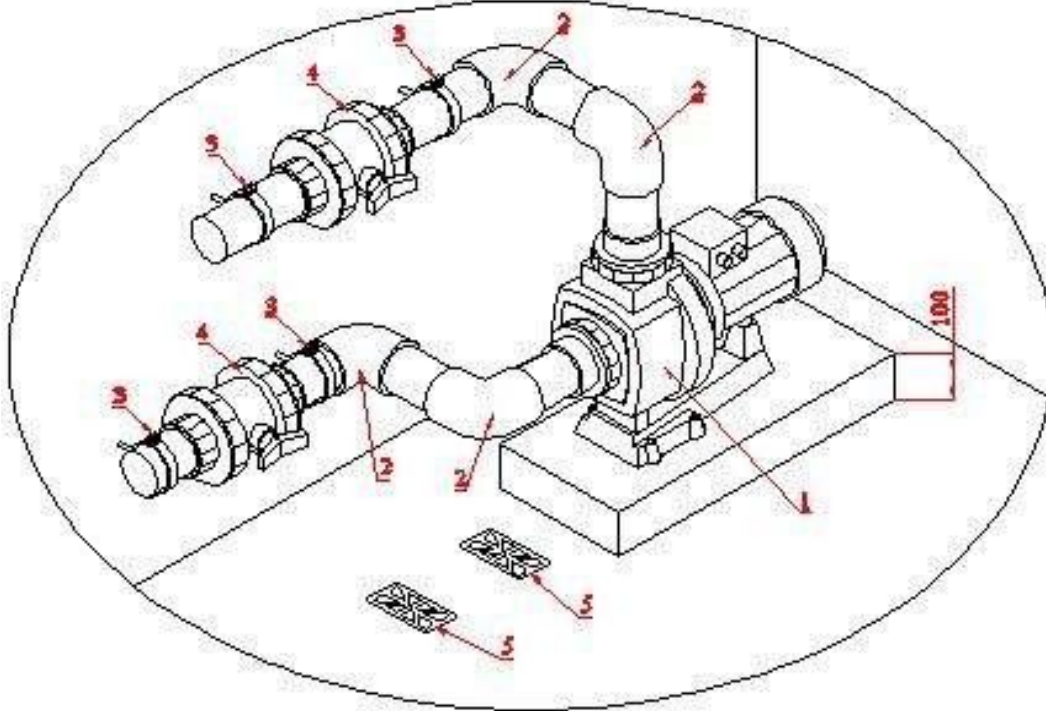
4.

4



- Kripsol Karpa KA-250 ().
- ().
- Koral KS-150. Kripsol
- Kripsol Karpa KA-250 5.

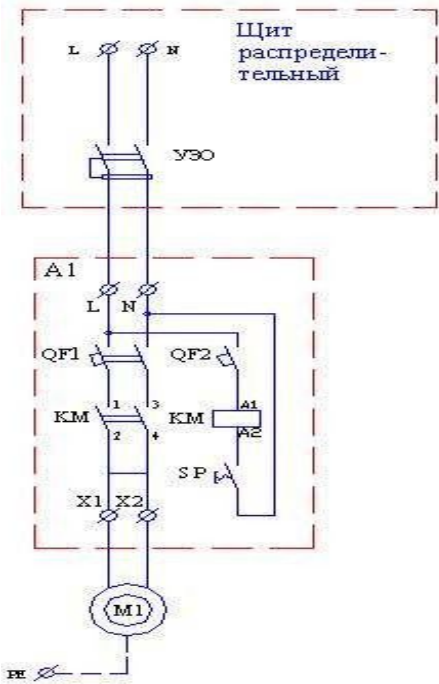
5



5

1	(40 3/ 220) Kripsol Karpa KA-250 M
2	90 . . 90 Coraplax (7101090)
3	. 90
4	. 90 Coraplax (1010090)
5	(

- (,)
- Kripsol Karpa KA-250 (220) 1.
- 3 1.5 2,



1	*	220-0
1	KA/KAP-250 (220) Kripsol (5041.A)	
QF1	3-	.16A
QF2	1-	.6A
	-16-30-10 16	
S		

*
220-05

220-05

Kripsol Карпа KA-250

- ;
- ;
- ;
- ;
- ;
- ;
- ;
- ;
- ;
- ;

2.5. _____
Kripsol Карпа KA-250

- ;
- ;
- ;
- ;
- ;
- ;
- ;
- ;
- ;
- ;



2.6. _____

- ;
- ;
- ;
- ;
- ;
- ;
- ;
- ;
- ;
- ;

1.2. _____

- ;
- ;
- ;
- ;
- ;
- ;
- ;
- ;
- ;
- ;



3.

3.1. _____

Kripsol Karpa KA-250

BHITMAHITE !!!

Kripsol Karpa KA-250

.2.5 2.6



Kripsol Karpa KA-250



- Kripsol Karpa KA-250
 .1.2. ;
 - Kripsol Karpa KA-250
 4.2 15150 .1.2.
 ;
 - Kripsol Karpa KA-250
 .51232-98 2.1.4.559-96 ;
 - Kripsol Karpa KA-250 6 12
 (
);
 - Kripsol Karpa KA-250 4
 ;
 - Kripsol Karpa KA-250
 ;
 - Kripsol Karpa KA-250
 ;
 - Kripsol Karpa KA-250 (;
);
 - Kripsol Karpa KA-250 ;
 ;
 - Kripsol Karpa KA-250
 ;
 - Kripsol Karpa KA-250 ();
 () ;
 - Kripsol Karpa KA-250 ();

3.2. _____

Kripsol Karpa KA-250
+5°C

60%.

Kripsol Karpa KA-250

Kripsol Karpa KA-250

24-

Kripsol Karpa KA-250

.2

3.3. _____

	.1.2.	
	(,)	(: .)
		3
	.1.2.	
	(,)	
	/	

3.4. _____

12.3.019-80, "

Kripsol Karpa KA-250

", "



! , , Kripsol Karpa KA-250 ,

3.5. _____

4.

4.1. _____.

Kripsol Karpa KA-250

_____ ;

_____ ;

_____ ;

_____ ;

_____ ;

_____ ;

_____ ;



_____ ;

Kripsol Karpa KA-250

4.2. _____.

()

. 2.2. . 3.4.

4.3. _____.



_____ !

_____ ;

_____ ;

Kripsol Karpa KA-250

. 2.4.

4.4. _____.

Kripsol Karpa KA-250
)

. 2.5.

(

4.5. _____.

. 1.2.

(

)

. 2.4.

;

—

—

—

. 1.2. . 6.

5.

5.1. _____.

BHIMAHIE !!!

_____ ;

_____ ;

5.2. _____.

. 2.2. . 3.4.

Kripsol Karpa KA-250

6.

+10° +35°

60%



[Empty rectangular box]

7.

Kripsol Karpa KA-250

8.

Kripsol Karpa KA-250

Kripsol Karpa KA-250

9.

Kripsol Karpa KA-250

«_____» _____ 20_____

10.

«_____» _____ 20_____

1.

2.

3.

4.

5.

6.

7.

8.

8.1.

8.2.

30

90()

8.3.

9.

9.1.

9.2.

10.

11.

12.

13.

14.

15.

16.

17.

18.

19.

()

14() 90()