

Kripsol TOLEDO TTO406-33
(400 л, 6 3/4 л)



1.

1.1. _____.

30 . . .

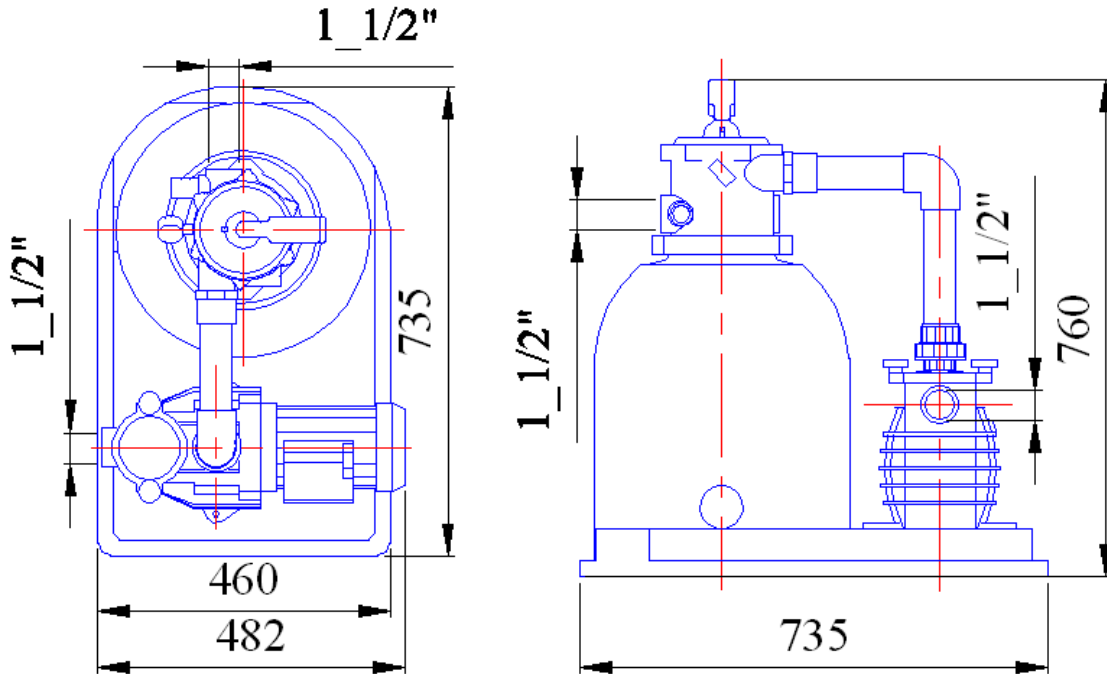
Kripsol Toledo TTO406-33

1.2 _____.

1.

Kripsol Toledo TTO406-33

1



		735	482	760
--	--	-----	-----	-----

1.3. _____.

ВНИМАНИЕ !!!



Kripsol Toledo TTO406-33

4.2

15150.

Kripsol Toledo TTO406-33

1

1

		~ 220
	%	± 5%
		0,24
		2,45
	-	I
	-	F
		IP 54
		50
		25,5
	°	+10 +35
	%	60
	°	45
		1,5
		50
		0,5-1,0

1.4. _____.

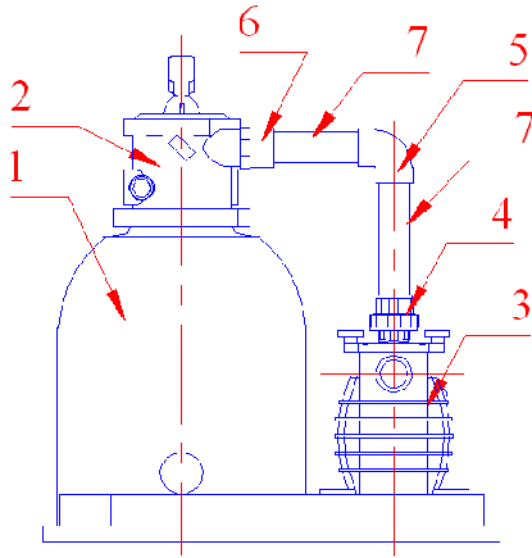
Kripsol Toledo TTO406-33

2, 3, 4;

2,

3,4

2



2

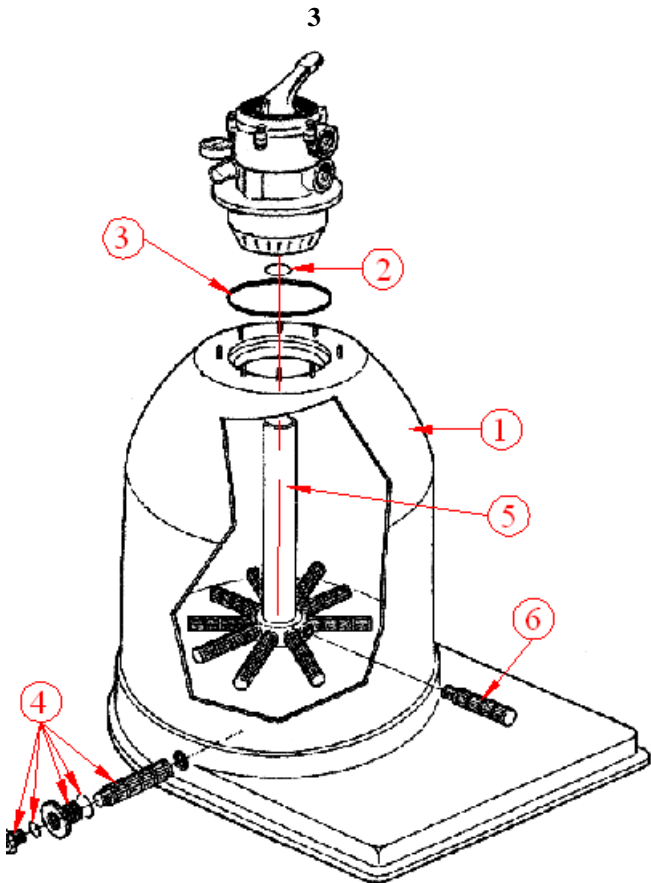
1	(400 . . .) Kripsol TOLEDO TT 406
2	6- . (1 1/2") TOLEDO TT Kripsol
3	Kripsol Ondina OK-33
4	. 50-1 1/2" Coraplast (7404050)
5	90 . . 50 Coraplast (7101050)
6	. 50/63-1 1/2" Coraplast (7308050)
7	. 50

33

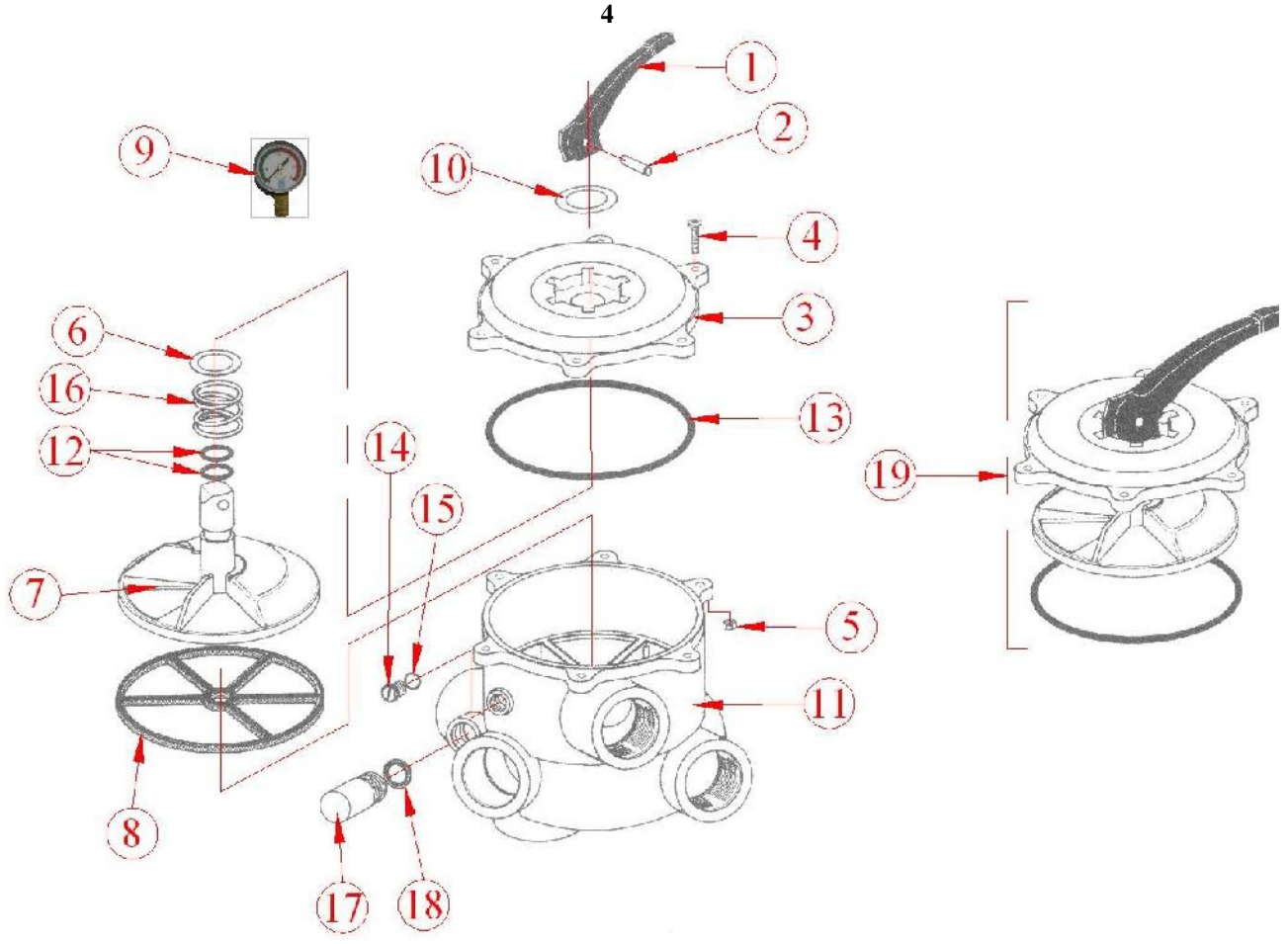
« 1 2» ((400 . . .) Kripsol TOLEDO TTO406-

3

3



1	(400 . . .) Kripsol TOLEDO TT 406
2	- 6/4 . . . Kripsol RVK
3	- . . . TOLEDO Kripsol RTT 030.A
4) (. . .) TOLEDO Kripsol RBA 040.A
5	(400 . . .) TOLEDO TT406 Kripsol R092 CC.A
6	(400 . . .) TOLEDO TT406 Kripsol R080 BC.A



4

1	6-	Kripsol RVS 001.A
2	-	6- Kripsol RVS 002.
3	6- .	(1 ½”) Kripsol RVS 003.
4	045. (. 6 35 (6 .) 4)	6- . Kripsol RVS
5	. 6(6 .)	6- .
6		6- . Kripsol RVS 006.
7		6- . (1 ½”)Kripsol RVS 007.
8		() 6- . (1 ½”) Kripsol RVS 008.A
9	Kripsol 13.	
10		6- . Kripsol RVS 010.
11	6- . (1 ½”) Kripsol	TOLEDO TT Kripsol
12	-	6- . Kripsol RVS 012.
13	-	6- . (1 ½”) Kripsol RVS 013.
14	- 15)	6- Kripsol RVS 145.A (
15	-	6- Kripsol
16		6- . Kripsol RVS 016.A
17		6- . Kripsol RVS 178.A (
18	18)	
18		6- . Kripsol
19		6- . (1 ½”) Kripsol RVS 019.A

1.5. _____.

« »
Kripsol Toledo TTO406-33 :

- ✓ (400) Kripsol TOLEDO TT 406;
- ✓ 6- . (1 1/2») TOLEDO TT Kripsol;
- ✓ Kripsol Ondina OK-33.

() ()
()

6-
1,5
6- . (1 1/2») TOLEDO TT Kripsol

- : «1 (FILTER)» - ;
- «2 (BACKWASH)» - () ;
- «3 (RINSE)» - () ;
- «4 (WASTE)» - ;
- «5 (RECIRCULATE)» - ;
- «6 (CLOSED)» - 6- ;
- «0 (WINTER)» -



5.

BHITMAHIIE !!!

5



()
()

6.

BHITMAHIIE !!!

BHITMAHIIE !!!

6



()

:

()

7.

BHIMAHIE !!!

BHIMAHIE !!!

7



8.

BHIMAHIE !!!

8



9.

ВНИМАНИЕ !!!



9



CLOSED 6-
CLOSED

10.

6-

ВНИМАНИЕ !!!



10



(. 4 .8),

11.

«0».

BHITMAHIE !!!



11



Kripsol Ondina OK-33.

Kripsol Ondina OK-33

Kripsol Ondina

OK-33.

1.6. _____.

BHITMAHIE !!!



Kripsol Toledo TTO406-33

(400 , 6 3/) (. .) Kripsol Toledo TTO406-33,

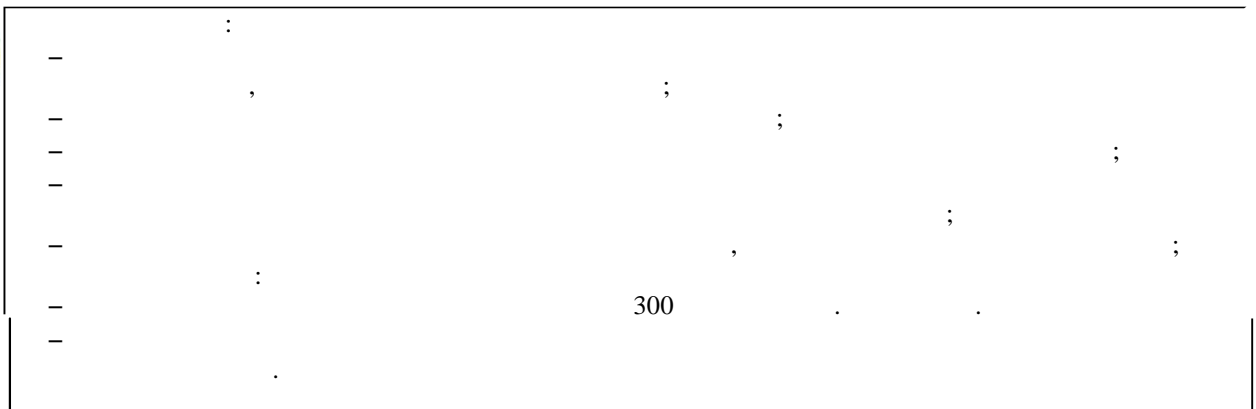


		750	480	740

2.

2.1. _____.

Kripsol Toledo TTO406-33



2.2. _____.

Kripsol Toledo TTO406-33

(), ,

- 12.1.019-79 .
- 12.1.013-78 .
- 12.3.032-84 .
- 12.3.019-80 .
- 12.1.030-81 .
- 153-34.0-03.150-00. ()
- 12.3.006-75 .
- 12.1.005-88 .
- 12.3.009-76 .
- 12-03-01. I.
- 12-04-02. 2.
- 12.1.004-91 .
- 01-93. .
- 22.0.01-94. .
- 22.3.03-94. .

2.3. _____.

Kripsol Toledo TTO406-33

- . .) (

- ,

- 1%

- +10 +35 ° 60%,

- , , ,

- ,

- Kripsol Toledo TTO406-33

- :

- Kripsol Toledo TTO406-33 ,

- Kripsol Toledo TTO406-33

- 24-

- Kripsol Toledo TTO406-33

2.4. _____.

BHIMAHIE !!!

12 14

Kripsol Toledo TTO406-33,

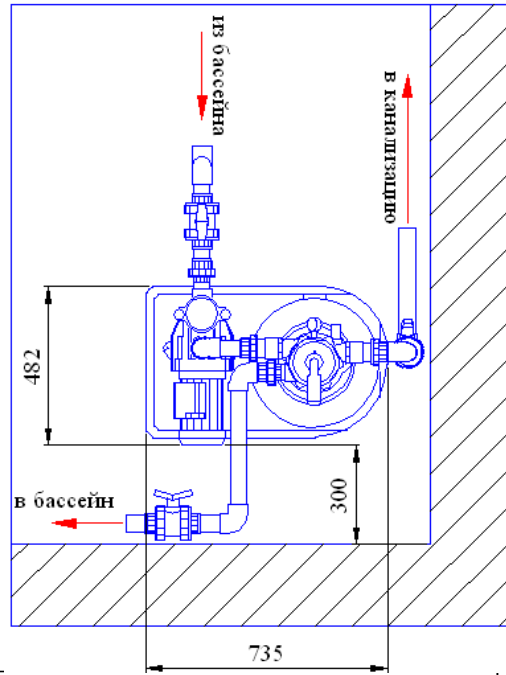
_____ ,

Kripsol Toledo TTO406-33 :

BHIMAHIE !!!

550 .

Kripsol Toledo TTO406-33
)
 (3)
 2.3. 2.1.
 100
 Toledo TTO406-33
 12. Kripsol

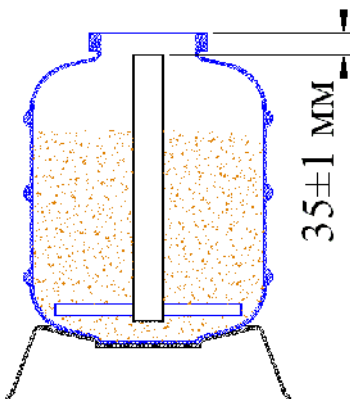
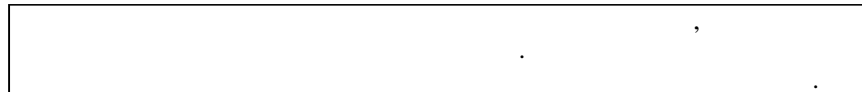


ВНИМАНИЕ !!!

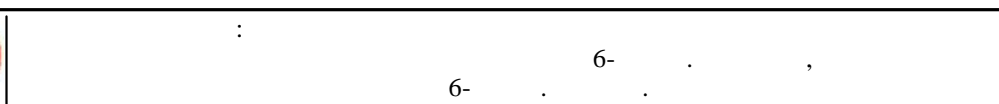
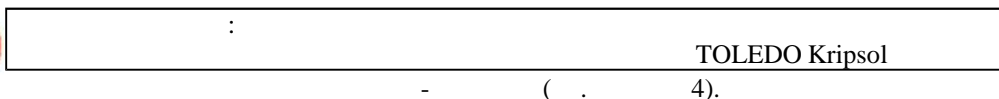


-
 -
 -
 -
 -
 (. 3)

ВНИМАНИЕ !!!



-
 - 6- (. 3)
 - 6- (. 3)
 -



14.

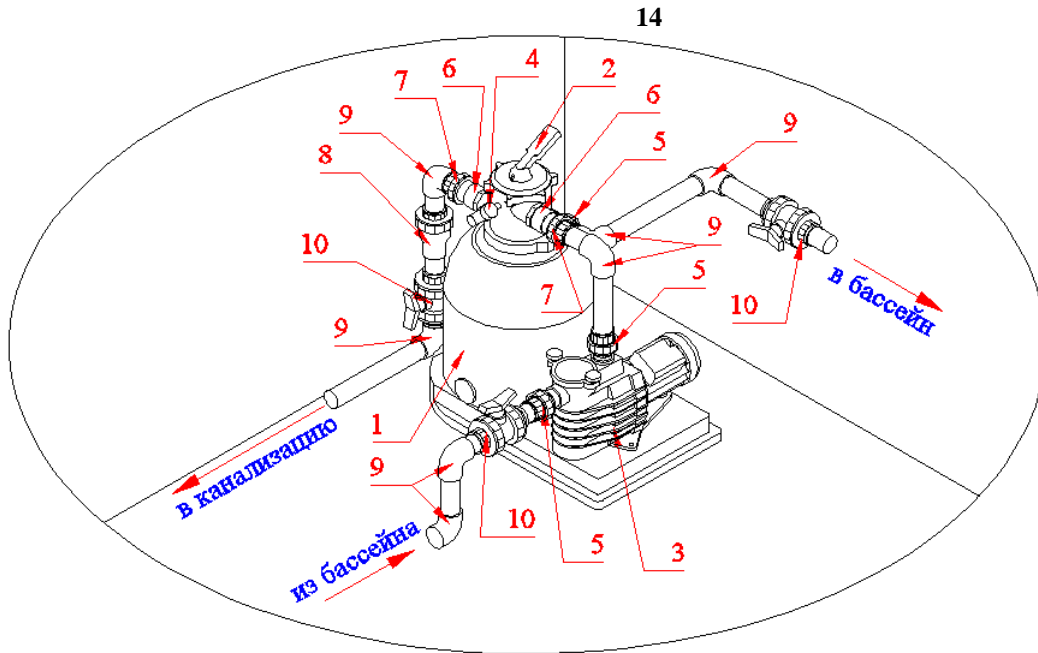
5.



_____ : _____ , _____

ВНИМАНИЕ !!!

_____ 14. _____ 6- _____ , _____



5

1	(400 _____) Kripsol TOLEDO TT 406
2	6- _____ (_____ 1 1/2») TOLEDO TT Kripsol
3	(6 3/ 220 _____) Kripsol Ondina OK-33
4	Kripsol _____ 13.
5	_____ .50-1 1/2" Coraplast (7404050)
6	_____ .50/63-1 1/2" Coraplast (7308050)
7	_____ .50 Coraplast (7414050)
8	_____ .50 Coraplast (1310050)
9	90 _____ .50 Coraplast (7101050)
10	_____ .50 Coraplast (1010050)

Kripsol Ondina OK-33
Kripsol Ondina OK-33».

«

ВНИМАНИЕ !!!

_____ 550 _____ . _____

Kripsol Toledo TTO406-33

:

6- _____ (_____ 1 1/2») Kripsol

«0» (_____ 11).

Kripsol Ondina OK-33

«

Krips

Ondina OK-33».

15,

3.1. _____

Kripsol Toledo TTO406-33

BHITMAHIIE !!!

Kripsol Toledo TTO406-33

2.5 2.6



TTO406-33

Kripsol Toledo



- Kripsol Toledo TTO406-33
 - .1.2. ;
 - Kripsol Toledo TTO406-33
 - 4.2 15150
 - .1.2. ;
 - Kripsol Toledo TTO406-33
 - . 51232-98 2.1.4.559-96 ;
 - 6
 - 12 (;
 -) ;
 - 4
 - ;
 - Kripsol Toledo TTO406-33
 - , , , ;
 - ;
 - ;
 - Kripsol Toledo TTO406-33
 - () ;
 - ;
 - Kripsol Toledo TTO406-33
 - ;
 - , () ;
 - Kripsol Toledo TTO406-33
 - () ;
 - ;
 - Kripsol Toledo TTO406-33
 - (;
 -) ;
 - ;
 - TOLEDO Kripsol;
 - Kripsol Toledo TTO406-33
 - , .
 - :
 - 6- ,
 - 6- .
 - Kripsol Toledo TTO406-33
 - “ ”
 - Kripsol Toledo TTO406-33
 - PH.
 - Kripsol Toledo TTO406-33
 - ,
 - .

3.2. _____.

Kripsol Toledo TTO406-33
+5°C
Kripsol Toledo TTO406-33
Kripsol Toledo TTO406-33

60%.

24-

TTO406-33

.2

Kripsol Toledo

3.3. _____.

Kripsol Toledo TTO406-33

Kripsol Toledo TTO406-33,
Kripsol Toledo TTO406-33

6

Kripsol Toledo TTO406-33

6

	.1.2.	
	(,)	(:)
		3
	.1.2.	
	(,)	

	/	
6-	6-	6-
	6- (1 1/2»)	6- ,
) (,	
	(2
).	
	()	
()		
	«) » (,	
		2
	()	
()		PH
	(,)	
	().	
		2

	(. 3).	2
	6- . (1 ½»)	6- ,
	6- «0»,	6- .

3.4. _____.

Kripsol Toledo TTO406-33

12.3.019-80, «

», «

2.2.

».



! Toledo TTO406-33 Kripsol

3.5. _____.

4.1. _____.

Kripsol Toledo TTO406-33

Kripsol Toledo TTO406-33 :

-
-
-
-
-
-
-
-
-
-
-

6-

6-

()



Kripsol Toledo TTO406-33

4.2. _____

()

. 2.2. . 3.4.

4.3. _____



! Toledo TTO406-33 Kripsol

. 2.4.

4.4. _____

Kripsol Toledo TTO406-33

. 2.5.

()

4.5. _____

. 1.2. ()

— ; . 2.4. ;

— . 1.2. . 6. .

5. .

5.1. .

5.2. .

. 2.2. . 3.4.

6. .

Kripsol Toledo TTO406-33

+10 ° +35 °

60%



7. .

Kripsol Toledo TTO406-33

8. .

Kripsol Toledo TTO406-33

Kripsol Toledo TTO406-33

«_____» _____ 20_____

«_____» _____ 20_____

1.

, , :
, , ()

2.

12 ()

3.

:

4.

30 ()

90 ()

5.

()

6.

7.

8.

8.1.

8.2.

8.3.

9.

9.1.

9.2.

10.

11.

12.

13.

14.

15. ().

16.

14 () 90 ()

17.

18.

19.

()
