

**Kripsol TOLEDO TLO526-71**  
(520 л, 10 3/4")



1.

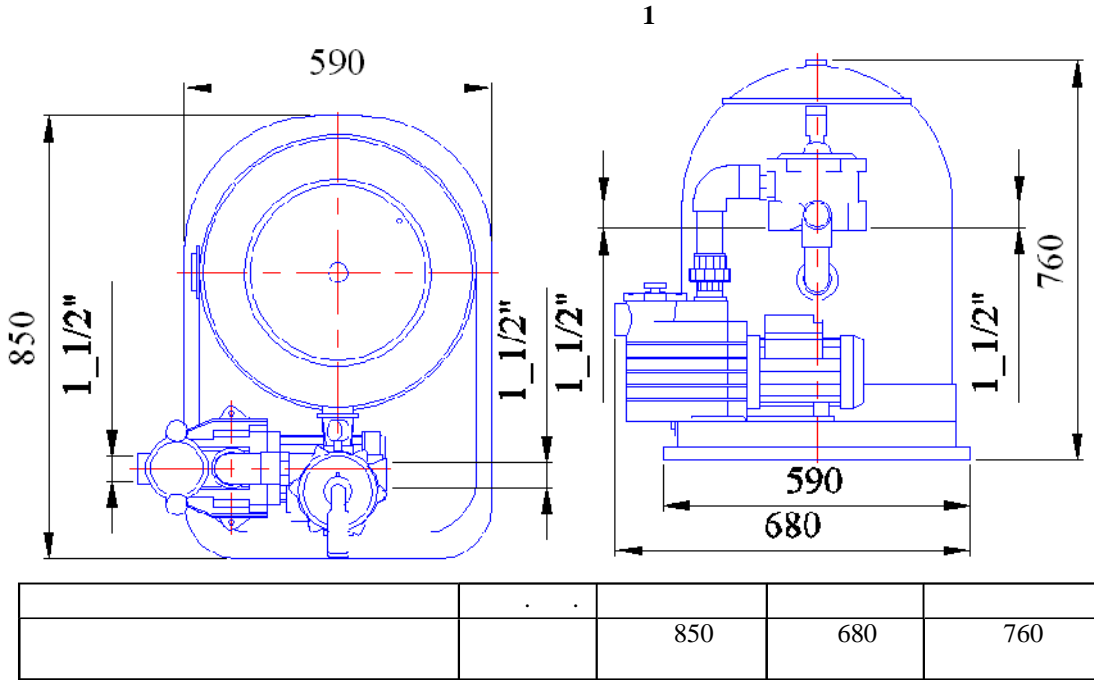
1.1. \_\_\_\_\_.

50 . . . Kripsol Toledo TLO526-71

1.2 \_\_\_\_\_.

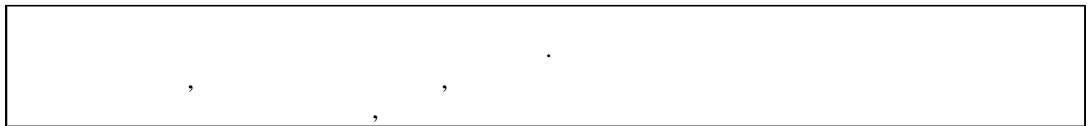
Kripsol Toledo TLO526-71

1.



1.3 \_\_\_\_\_.

**ВНИМАНИЕ !!!**



Kripsol Toledo TLO526-71

4.2 15150.

Kripsol Toledo TLO526-71

1

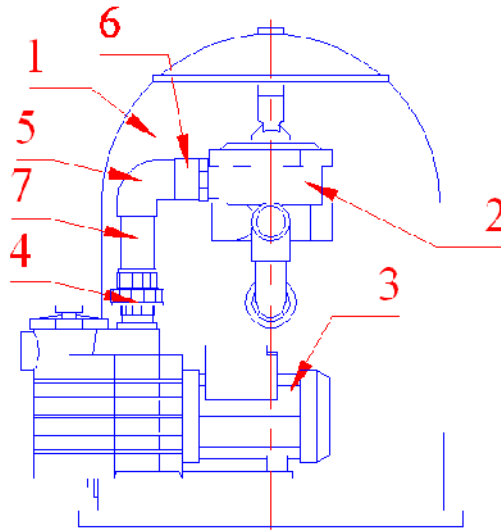
		<b>1</b>
		~ 220
	%	± 5%
		0,55
		4
	-	I
	-	F
		IP 54
		100
		35,5
	°	+10 +35
	%	60
	°	45
		1,5
		50
		0,5-1,0

1.4. \_\_\_\_\_.

Kripsol Toledo TLO526-71

2, 3, 4;

2, 3,



2

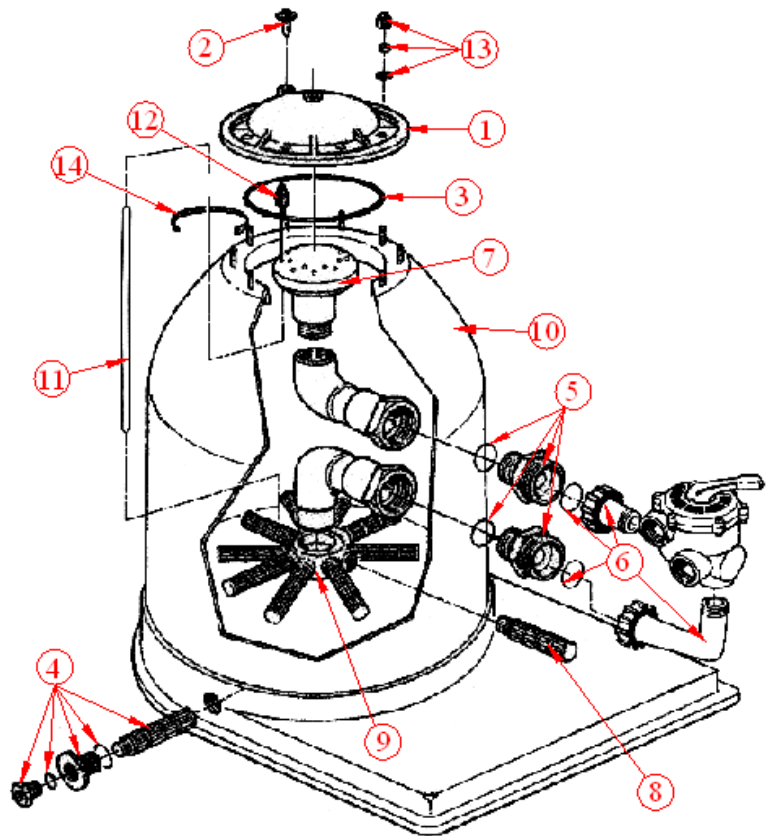
1	(520 . . .) Kripsol Toledo L526
2	6- . ( . . . 1 1/2") Toledo TL Kripsol
3	Kripsol Ondina K-71
4	. 50-1 1/2» Coraplax (7404050)
5	90 . . 50 Coraplax (7101050)
6	. 50/63-1 1/2" Coraplax (7308050)
7	. 50

« 3 1 2» ( (520 . . .)Kripsol TOLEDO TL 526)

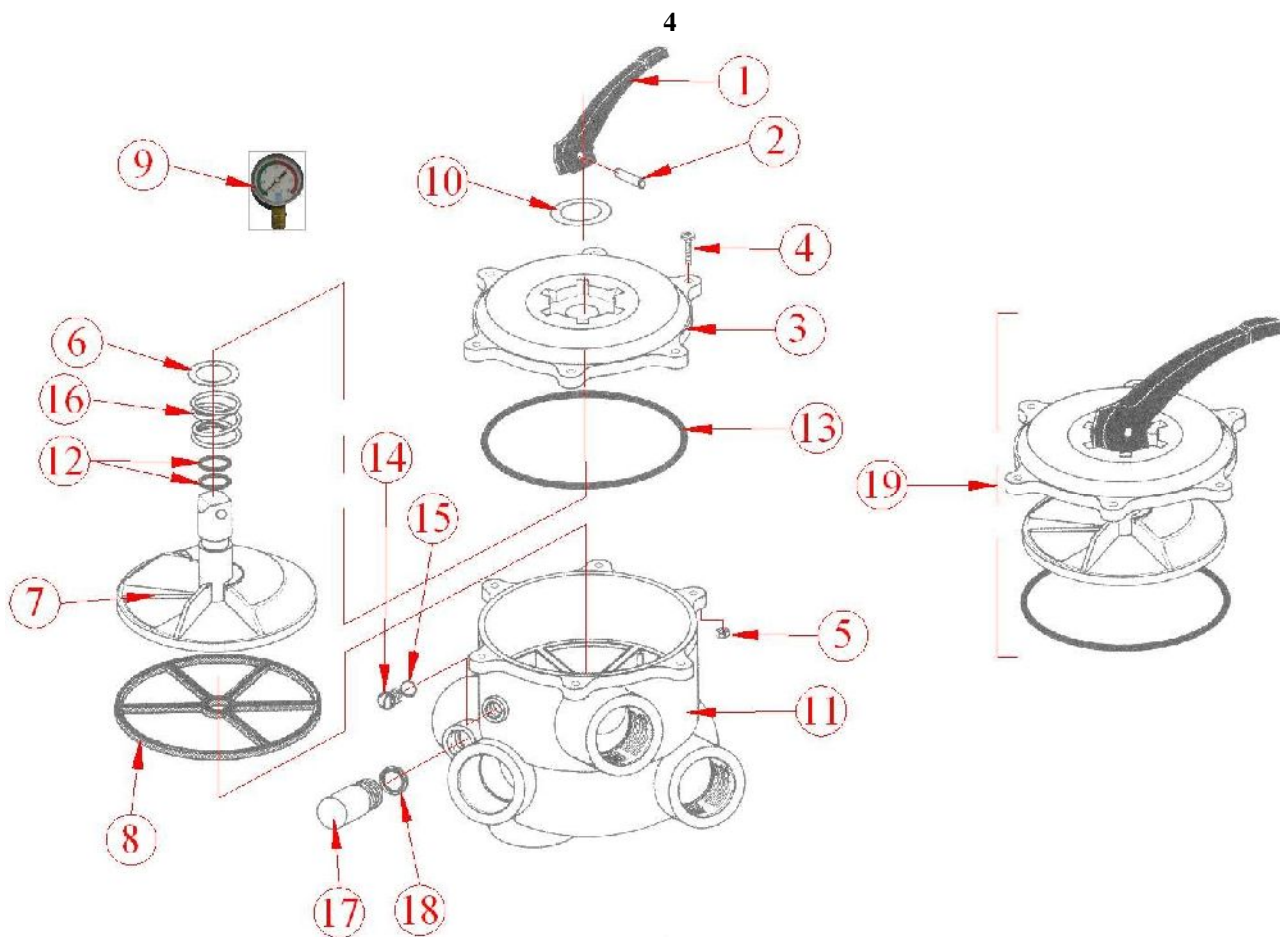
3

3

1	oledo L Kripsol RBR 010.A
2	
3	oledo Kripsol RBR 030.A
4	( . . . ) oledo Kripsol RBA 040.A
5	6- . . . oledo TL Kripsol RBA 050.A
6	6- . . . (1 1/2») IBIZA IL, Toledo L Kripsol R060 EC.A
7	( . . . ) oledo R070 DF.A
8	(520 . . .) Toledo TL 526 Kripsol R082 BC.A
9	( . . . ) Toledo TL Kripsol R090 CC.A
10	Toledo L526 (520 . . .) Kripsol
11	Toledo TL Kripsol RIB 000.
12	Toledo TL Kripsol
13	(8 . . .)
14	



« 4. 2 2» ( 6- . ( 1 1/2») TOLEDO TL Kripsol)



4

1	6-	Kripsol RVS 001.A
2	-	6- Kripsol RVS 002.
3	6-	(1 1/2") Kripsol RVS 003.
4	045. ( 6 35 (6 .) 4)	6- Kripsol RVS
5	6 (6 .)	6-
6	-	6- Kripsol RVS 006.
7	6-	(1 1/2") Kripsol RVS 007.
8	( ) 6-	(1 1/2") Kripsol RVS 008.A
9	Kripsol 13.	
10	-	6- Kripsol RVS 010.
11	6- ( 1 1/2")	Kripsol Toledo TL
12	-	6- Kripsol RVS 012.
13	-	6- (1 1/2") Kripsol RVS 013.
14	-	6- Kripsol RVS 145.A (
15	15)	
16	-	6- Kripsol
17	-	6- Kripsol RVS 016.A
18	18)	6- Kripsol RVS 178.A (
19	-	6- Kripsol
	6-	(1 1/2") Kripsol RVS 019.A

Krips Ondina « 3 2» ( Kripsol Ondina K-71) .

1.5 \_\_\_\_\_.

« »  
Kripsol Toledo TLO526-71 :

- (520 . . .) Kripsol TOLEDO L526;
- 6- . ( 1 1/2») TOLEDO TL Kripsol;
- Kripsol Ondina K-71.

( )  
 ).  
 ( ).

(

6- . ( 1 1/2») 6- 1,5 . TOLEDO TL Kripsol

- «1 (FTLTER)» - ;
- «2 (BACKWASH)» - ( ) ;
- «3 (RINSE)» - ( ) ;
- «4 (WASTE)» - ;
- «5 (RECIRCULATE)» - ;
- «6 (CLOSED)» - 6- ;
- «0 (WINTER)» -



5.

**BHITMAHIE !!!**

5



( )  
 ( )

6.

**BHITMAHIE !!!**

**BHITMAHIE !!!**

6



( )

( )

( )

7.

**BHIMAHIE !!!**

**BHIMAHIE !!!**

7



:

8.

**BHIMAHIE !!!**

8



9.

**BHITMAHIE !!!**



9

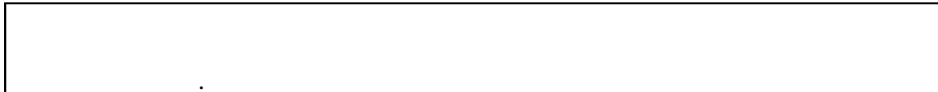


CLOSED 6-  
CLOSED

10.

6-

**BHITMAHIE !!!**



10

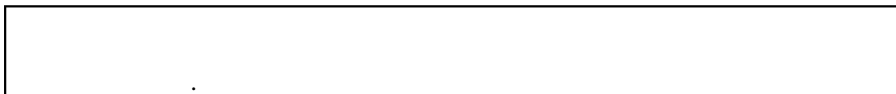


( . 4 .8),

11.

«0».

**BHITMAHIE !!!**







2.2. \_\_\_\_\_.

Kripsol Toledo TLO526-71

( ), , :

- 12.1.019-79 .
- 12.1.013-78 .
- 12.3.032-84 .
- 12.3.019-80 .
- 12.1.030-81 .
- 153-34.0-03.150-00. ( )

- 12.3.006-75 .
- 12.1.005-88 .
- 12.3.009-76 .
- 12-03-01. I.
- 12-04-02. 2.
- 12.1.004-91 .
- 01-93. .
- 22.0.01-94. .
- 22.3.03-94. .

2.3. \_\_\_\_\_.

Kripsol Toledo TLO526-71

— ( )

—

— ,

— 1%

— 60%, +10

+35° .

—

—

—

—

— Kripsol Toledo TLO526-71 :

— Kripsol Toledo TLO526-71 ,

— Kripsol Toledo TLO526-71

— 24- ,

— Kripsol Toledo TLO526-71

2.4 \_\_\_\_\_.

**BHIMAHIE !!!**

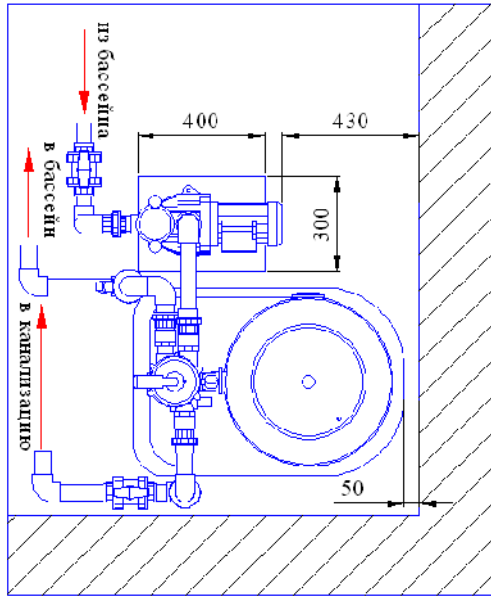
12 14	Kripsol Toledo TLO526-71,
_____	,

Kripsol Toledo TLO526-71 :

**BHIMAHIE !!!**

600 .
-------

2.3. Kripsol Toledo TLO526-71  
 ( )  
 ( 3 )  
 2.1.  
 100  
 Kripsol  
 Toledo TLO526-71  
 12.



**ВНИМАНИЕ !!!**

( )

**ВНИМАНИЕ !!!**

( )

13.

13



( 3 )

( 3 )

6-



: Toledo TL  
Kripsol

- ( . 4).



: 6- . . . ,

- Kripsol Ondina K-71 « Kripsol Ondina K-71».  
- Kripsol Toledo TLO526-71 14.  
5.

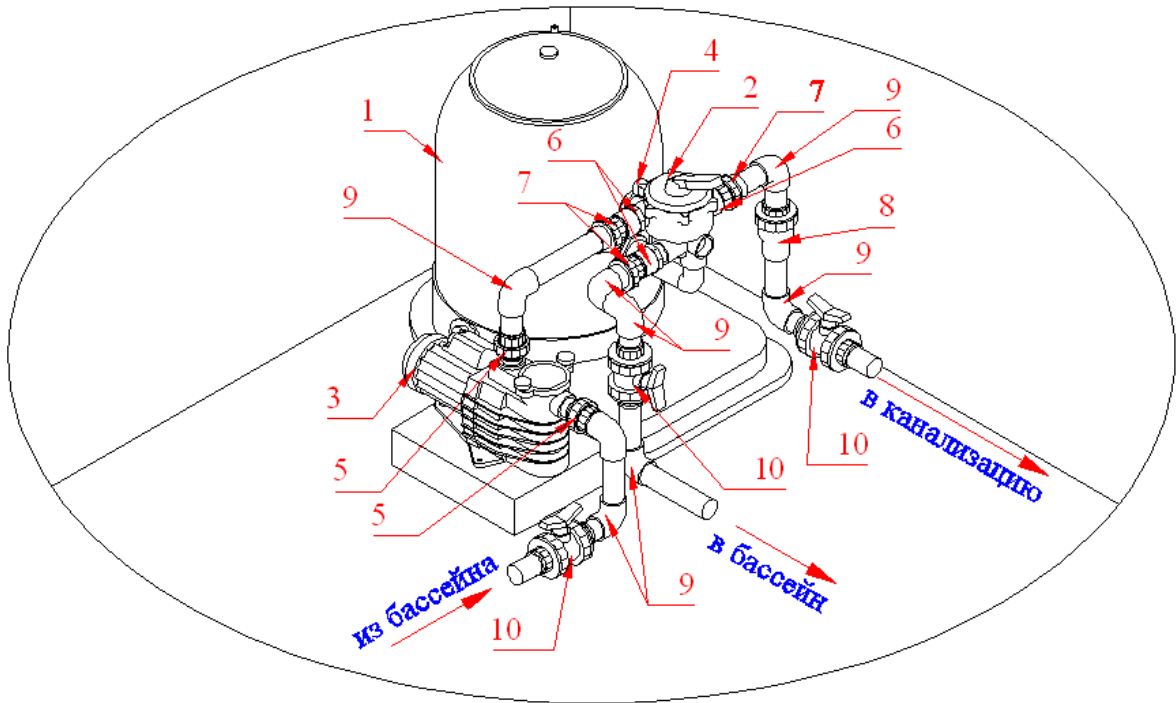


: . ,

**ВНИМАНИЕ !!!**

6 ( . 2)  
50 .

14



5

1	(520 . . .) Kripsol TOLEDO L526
2	6- . ( 1 1/2" ) TOLEDO TL Kripsol
3	(10 3/ 220 ) Kripsol Ondina K-71
4	Kripsol 13.
5	. 50-1 1/2» Coraplast (7404050)
6	. 50/63-1 1/2" Coraplast (7308050)
7	. 50 Coraplast (7414050)
8	. 50 Coraplast (1310050)
9	90 . . 50 Coraplast (7101050)
10	. 50 Coraplast (1010050)

- Kripsol Ondina K-71 «  
Kripsol Ondina K-71».

**ВНИМАНИЕ !!!**

600 .

Kripsol Toledo TLO526-71

6- ( 1 1/2" ) Kripsol

«0» ( 11

Kripsol Ondina K-71 «

Kripsol Ondi

K-71».

15,

15



TOLEDO Kripsol.

13 ( . ) .

( . 3)

Kripsol TOLEDO TL 526.

6- ( 1 1/2" )

TOLEDO TL Kripsol

(520 .

6-

2.5. \_\_\_\_\_ .

Kripsol Toledo TLO526-71

( . )

( . ) .

Kripsol Ondina K-71».

Kripsol Ondina K-71 «

«



Kripsol Toledo TLO526-71,

2.6. \_\_\_\_\_ .

**ВНИМАНИЕ !!!**

( . 2)

6

50

( 1.5 ) .

« . » .

( . ) .

( . ) .

( 1.5 ) .



[Redacted area]

3.

3.1. \_\_\_\_\_

Kripsol Toledo TLO526-71

**ВНИМАНИЕ !!!**

Kripsol Toledo TLO526-71  
. 2.5 2.6



TLO526-71 Kripsol Toledo



Kripsol Toledo TLO526-71  
 .1.2. ;  
 Kripsol Toledo TLO526-71  
 4.2 15150  
 .1.2. ;  
 Kripsol Toledo TLO526-71  
 .51232-98 2.1.4.559-96 ;  
 6  
 12 ( ;  
 4  
 ;  
 Kripsol Toledo TLO526-71  
 ;  
 ;  
 Kripsol Toledo TLO526-71  
 ;  
 Kripsol Toledo TLO526-71  
 ;  
 ( Kripsol Toledo TLO526-71 ) ;  
 ;  
 Kripsol Toledo TLO526-71  
 ;  
 ( Kripsol Toledo TLO526-71 ) ;  
 ;  
 Kripsol Toledo TLO526-71  
 ;  
 ;  
 : Toledo TL Kripsol

Kripsol Toledo TLO526-71

6-

Kripsol Toledo TLO526-71

Kripsol Toledo TLO526-71  
PH.

Kripsol Toledo TLO526-71

3.2. \_\_\_\_\_

Kripsol Toledo TLO526-71  
+5°C

Kripsol Toledo TLO526-71

60%

Kripsol Toledo TLO526-71

24-

Kripsol Toledo TLO526-

71 .2

3.3. \_\_\_\_\_

Kripsol Toledo TLO526-71

Kripsol Toledo TLO526-71,  
Kripsol Toledo TLO526-71

6

Kripsol Toledo TLO526-71

**6**

	.1.2.	
	( , )	( : )
		3
	.1.2.	

	( )	
	/	
6-	6-	6-
	6- ( 1 1/2»)	6- ,
	( )	
	( )	2
	( )	
( )		
	« ) » ( ,	
		2
		( )
( )		PH
	( , )	

	( )	
		2
	( . 3)	2
	6- . ( 1 ½»)	6- . ,
	6- . «0»	6- .

3.4. \_\_\_\_\_

12.3.019-80, « Kripsol Toledo TLO526-71 », « 2.2.



Toledo TLO526-71 Kripsol

3.5. \_\_\_\_\_

4.

4.1. \_\_\_\_\_

Kripsol Toledo TLO526-71

Kripsol Toledo TLO526-71



Kripsol Toledo TLO526-71



4.2. \_\_\_\_\_.

( )

.2.2. .3.4.

4.3. \_\_\_\_\_.



! Toledo TLO526-71 Kripsol

.2.4.

4.4. \_\_\_\_\_.

Kripsol Toledo TLO526-71  
( )

. 2.5.

4.5. \_\_\_\_\_.

. 1.2.

( )

— :

.2.4.

;

—  
—

. 1.2. . 6.

5.

5.1. \_\_\_\_\_.

\_\_\_\_\_.

5.2. \_\_\_\_\_.

.2.2. .3.4.

6.

Kripsol Toledo TLO526-71

+10 °

+35 °

60%



\_\_\_\_\_.

7.

Kripsol Toledo TLO526-71

8.

Kripsol Toledo TLO526-71

Kripsol Toledo TLO526-71

9.

Kripsol Toledo TLO526-71

«\_\_\_\_\_» \_\_\_\_\_ 20\_\_\_\_\_

10.

«\_\_\_\_\_» \_\_\_\_\_ 20\_\_\_\_\_

1.

( ' )

2.

12 ( )

3.

4.

30 ( )

90 ( )

5.

( )

6.

7.

8.

8.1.

8.2.

8.3.

9.

9.1.

.8

9.2.

( )

10.

.8

.9

