

Kripsol GRANADA GTO506-71
(500 л, 10 м³/ч)



1.

1.1. _____.

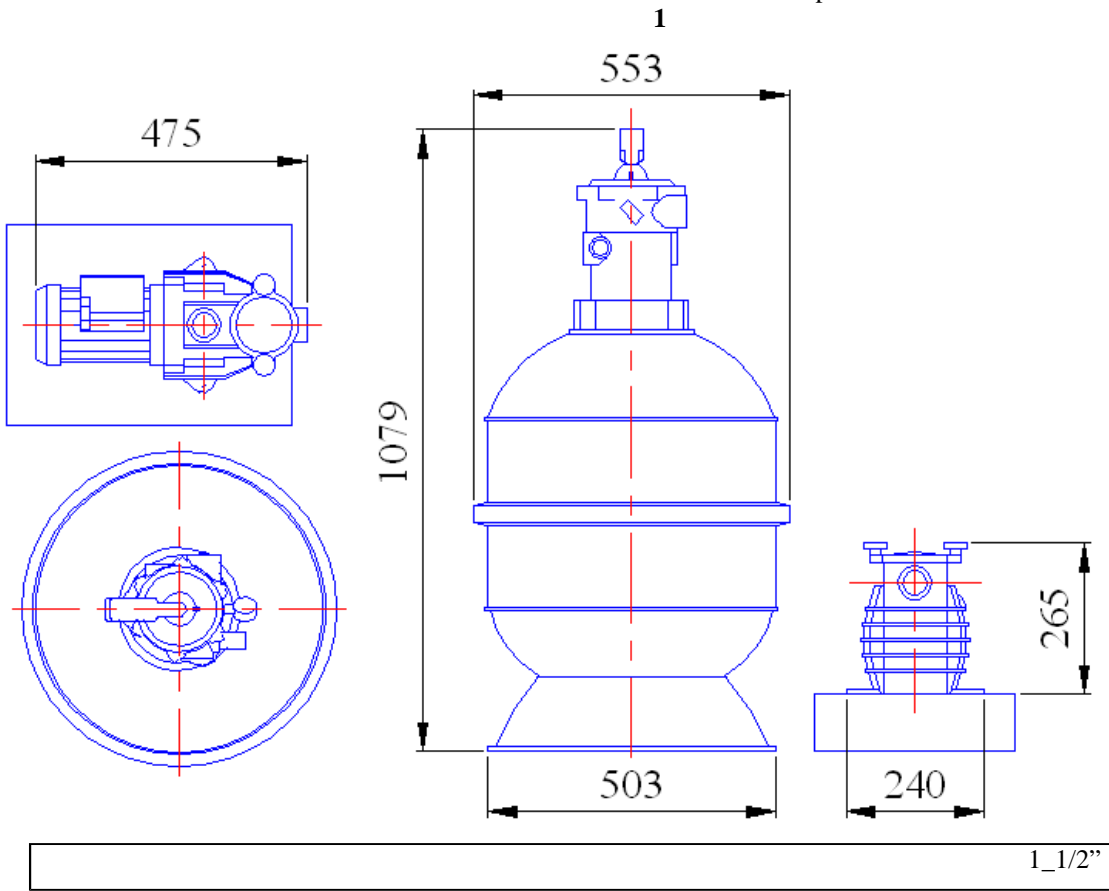
Kripsol Granada GTO506-71

50

1.2 _____.

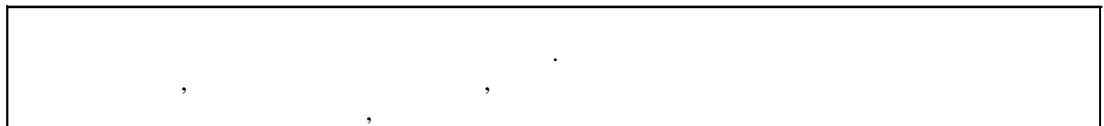
Kripsol Granada GTO506-71

1.



1.3. _____.

BHIMAHIE !!!



Kripsol Granada GTO506-71

4.2

15150.

Kripsol Granada GTO506-71

1

1

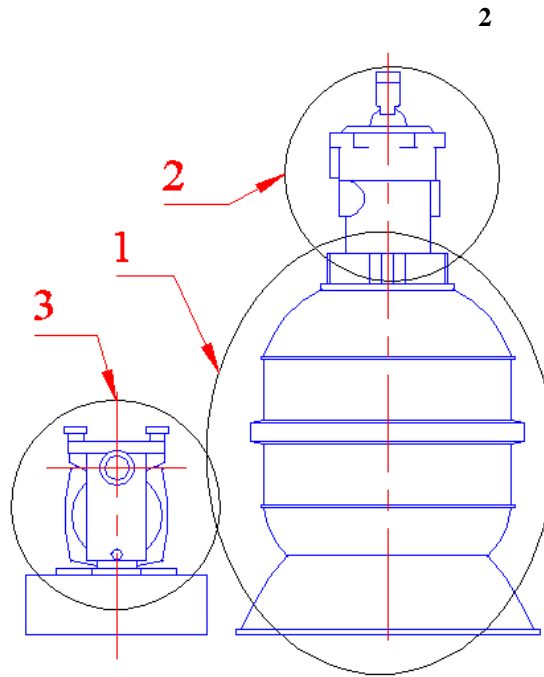
| | | |
|--|---|---------|
| | | |
| | | ~ 220 |
| | % | ± 5% |
| | | 0,55 |
| | | 4 |
| | - | I |
| | | F |
| | - | IP 54 |
| | | 90 |
| | | 25,2 |
| | ° | +10 +35 |
| | % | 60 |
| | ° | 45 |
| | | 1,5 |
| | | 50 |
| | | 0,5-1,0 |

1.4. _____.

Kripsol Granada GTO506-71

2, 3, 4;

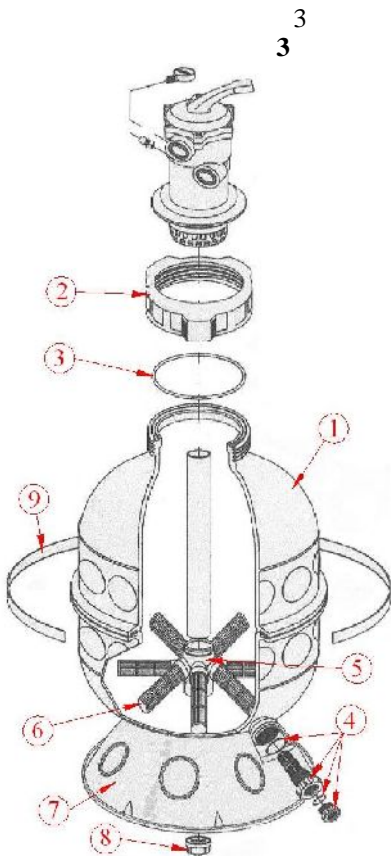
2, 3, 4



2

| | |
|---|---|
| 1 | (500) Kripsol GRANADA GT 506 |
| 2 | 6- . (1 1/2») GRANADA GT Kripsol VK6T-43.B |
| 3 | Kripsol Ondina OK-71 |

« 3 1 2» ((500) Kripsol GRANADA GT 506)

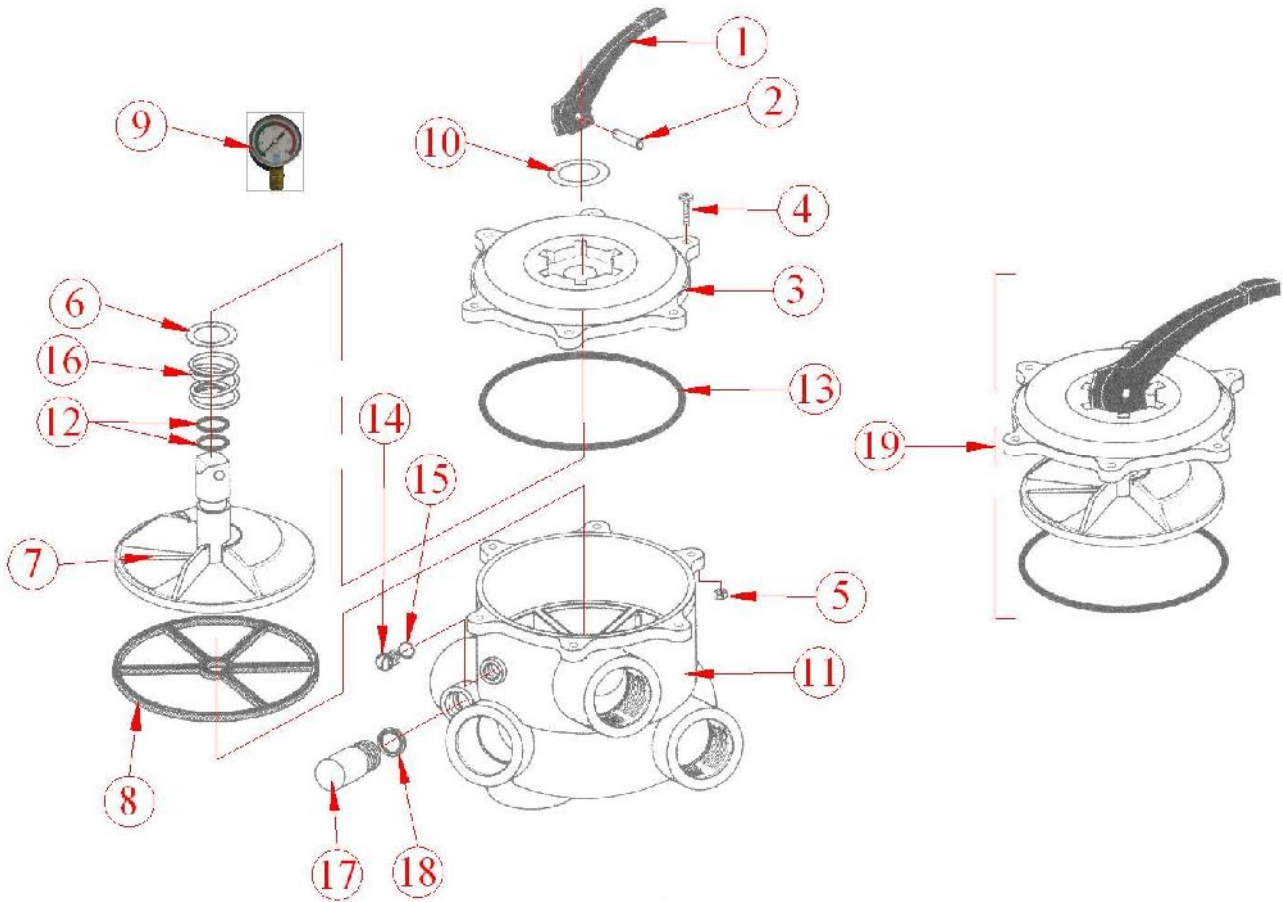


| | |
|---|---|
| 1 | (500) Kripsol GRANADA GT 506 |
| 2 | GRANADA Kripsol RGR020.A |
| 3 | - GRANADA Kripsol RGR030.A |
| 4 | RGR040.A (.) GRANADA Kripsol |
| 5 | R090 CC.A (500) GRANADA GT406 Kripsol |
| 6 | (500) GRANADA GT/GL 506 Kripsol R082 BC.A |
| 7 | GRANADA Kripsol |
| 8 | GRANADA GT Kripsol |
| 9 | GRANADA GT Kripsol |

VK6 43.B)

« 2 2» (6- . (1 1/2») GRANADA GT Kripsol

4.



4

| | | |
|----|----------------------|------------------------------|
| 1 | 6- | Kripsol RVS 001.A |
| 2 | - | 6- Kripsol RVS 002. |
| 3 | 6- | (1 1/2") Kripsol RVS 003. |
| 4 | 045. (6 35 (6 .) 4) | 6- Kripsol RVS |
| 5 | 6 (6 .) | 6- |
| 6 | - | 6- Kripsol RVS 006. |
| 7 | 6- | (1 1/2") Kripsol RVS 007. |
| 8 | () 6- | (1 1/2") Kripsol RVS 008.A |
| 9 | Kripsol 13. | |
| 10 | - | 6- Kripsol RVS 010. |
| 11 | 6- (1 1/2") | GRANADA GT Kripsol |
| 12 | - | 6- Kripsol RVS 012. |
| 13 | - | 6- (1 1/2") Kripsol RVS 013. |
| 14 | - | 6- Kripsol RVS 145.A (15) |
| 15 | - | 6- Kripsol |
| 16 | 6- | Kripsol RVS 016.A |
| 17 | 18) | 6- Kripsol RVS 178.A (|
| 18 | - | 6- Kripsol |
| 19 | 6- | (1 1/2") Kripsol RVS 019.A |

Krips Ondina OK-71

1.5. _____

« »
Kripsol Granada GTO506-71 :

(500 .) Kripsol GRANADA GT 506;
6- .(1 1/2» GRANADA GT Kripsol VK6T-43.B;
Kripsol Ondina OK-71.

()
)
()

(

6- 1,5
6- . (1 1/2» GRANADA GT Kripsol VK6T-43.B

- «1 (FILTER)» - ;
- «2 (BACKWASH)» - () ;
- «3 (RINSE)» - () ;
- «4 (WASTE)» - ;
- «5 (RECIRCULATE)» - ;
- «6 (CLOSED)» - 6- ;
- «0 (WINTER)» - .



5.

BHIMAHIE !!!

5



()
()

6.

BHIMAHIE !!!

BHIMAHIE !!!

6



()

:

()

7.

BHIMAHIE !!!

BHIMAHIE !!!

| |
|--|
| |
| |

7



:

8.

BHIMAHIE !!!

| |
|--|
| |
|--|

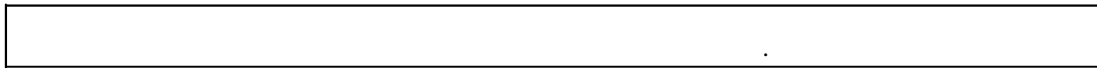
8



:

9.

BHITMAHIE !!!



9

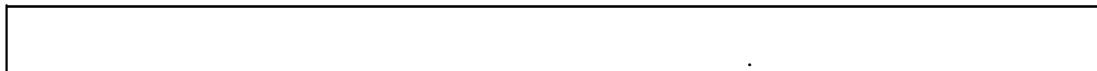


CLOSED 6-
CLOSED

10.

6-

BHITMAHIE !!!



10



(. 4 .8),

11.

«0».

BHITMAHIE !!!



11



Kripsol Ondina OK-71.

1.6. _____.

ВНИМАНИЕ !!!

GTO506-71 Kripsol Granada

(500 , 10 3/) (.) Kripsol Granada GTO506-71,



| | | | | |
|--|--|-----|-----|-----|
| | | | | |
| | | 870 | 600 | 800 |

2.

2.1. _____.

Kripsol Granada GTO506-71



| | | | | |
|---|---|-----|---|---|
| - | : | | | |
| - | , | | ; | |
| - | | | ; | |
| - | | | | ; |
| - | | | ; | |
| - | | 300 | , | ; |
| - | | | . | ; |

2.2. _____.

Kripsol Granada GTO506-71

(), , :

- 12.1.019-79 .
- 12.1.013-78 .
- 12.3.032-84 .
- 12.3.019-80 .
- 12.1.030-81 .
- 153-34.0-03.150-00. ()
- 12.3.006-75 .
- 12.1.005-88 .
- 12.3.009-76 .
- 12-03-01. I.
- 12-04-02. 2.
- 12.1.004-91 .
- 01-93. .
- 22.0.01-94. .
- 22.3.03-94. .

2.3. _____.

Kripsol Granada GTO506-71

- (

- ,

- 1%

+35° .

Kripsol Granada GTO506-71
Kripsol Granada GTO506-71

Kripsol Granada GTO506-71

24-

Kripsol Granada GTO506-71

2.4. _____.

ВНИМАНИЕ !!! 12 14
Kripsol Granada GTO506-71, _____.

Kripsol Granada GTO506-71

ВНИМАНИЕ !!! _____ 650

Kripsol Granada GTO506-71

(3)

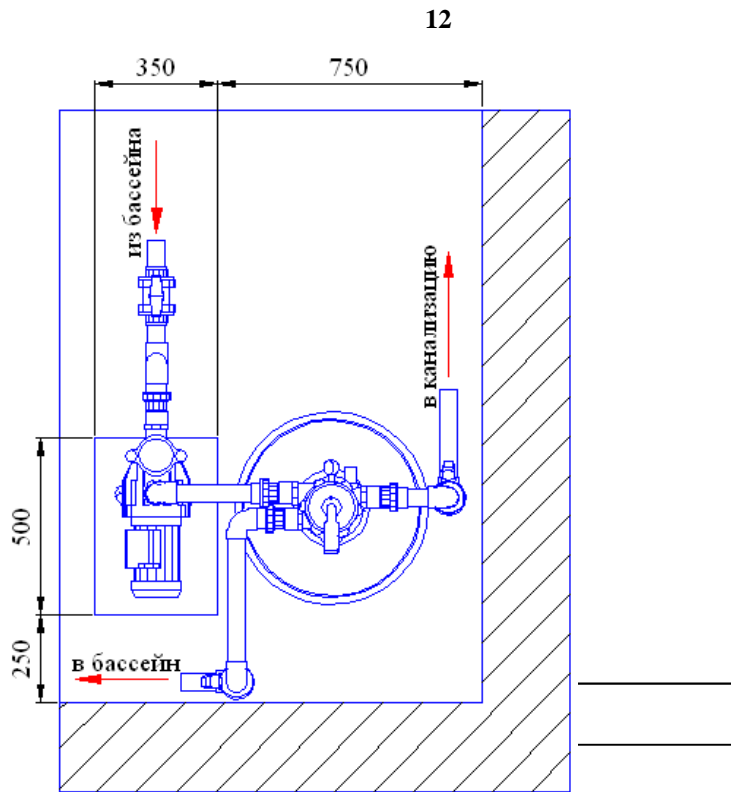
2.3.

2.1.

100

Granada GTO506-71
12.

Kripsol



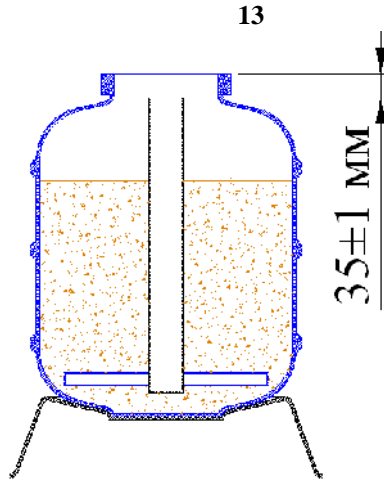
ВНИМАНИЕ !!! () .

(. 3 .5),

(. 3 .4) ,

ВНИМАНИЕ !!!

()



6- (. 3).

(. 3).



: ()
 GRANADA Kripsol RGR020.A

BHIMAHIE !!!

,
 .

(. 4).



:
 6- . ,

Kripsol Ondina OK-71

«

Kripsol Ondina OK-71».

Kripsol Granada GTO506-71

14.

5.



:
 ,

BHIMAHIE !!!

_____ 50 .

ВИНТ ДЛЯ СЛИВА ВОДЫ



— GRANADA Kripsol
— 6- (1 1/2») GRANADA GT Kripsol VK6T-43.B
(500 .) Kripsol GRANADA GT 506.

— ; , 6- .

2.5. _____ .

Kripsol Granada GTO506-71 :

— () ().

— ;
— ;

— ;
— Kripsol Ondina OK-71 «
Kripsol Ondina OK-71».



_____ :
Kripsol Granada GTO506-71,
_____ .

— ;

2.6. _____ .

ВНИМАНИЕ !!!

_____ 50 .

— (1.5).

— « ».

— ().

— (1.5).

— « ».

— ; .



_____ :
_____ ,
_____ .

3. _____ .

3.1. _____ .

Kripsol Granada GTO506-71

_____ , .
_____ ,
_____ .



GTO506-71 Kripsol Granada



- Kripsol Granada GTO506-71
 - .1.2. ;
 - Kripsol Granada GTO506-71
 - 4.2 15150
 - .1.2. ;
 - Kripsol Granada GTO506-71
 - .51232-98 2.1.4.559-96 ;
 - 6
 - 12 (;
 -) ;
 - ;
 - Kripsol Granada GTO506-71
 - , , , ;
 - ;
 - ;
 - Kripsol Granada GTO506-71
 - () ;
 - ;
 - Kripsol Granada GTO506-71
 - () ;
 - ;
 - Kripsol Granada GTO506-71
 - () ;
 - ;
 - Kripsol RGR020.A; () GRANADA
 - Kripsol Granada GTO506-71
 - ,
 - 6- ,
 - 6- ,
 - Kripsol Granada GTO506-71
 - “ ”
 - Kripsol Granada GTO506-71
 - PH.
 - Kripsol Granada GTO506-71 ,
 - .

3.2. _____
 Kripsol Granada GTO506-71 ,
 +5°C 60%.
 Kripsol Granada GTO506-71 ,
 Kripsol Granada GTO506-71

71

.2

3.3. _____.

Kripsol Granada GTO506-71

Kripsol Granada GTO506-71,
Kripsol Granada GTO506-71

6

Kripsol Granada GTO506-71

6

| | | |
|----|---------|-----|
| | | |
| | .1.2. | |
| | (, | (: |
| |) | .) |
| | | |
| | | 3 |
| | .1.2. | |
| | | |
| | | |
| | | |
| | (, | |
| |) | |
| | | |
| | / | |
| 6- | 6- | 6- |
| 6- | (1 ½») | 6- |
| | | |
| | | |
| | (, | |
| |) | |
| | | |

| | | |
|-----|--------------|------|
| | | |
| | () | 2 |
| | | |
| | () | |
| () | | |
| | «) » (,) | |
| | | 2 |
| | | () |
| () | (,) | PH |
| | | |
| | () | |
| | | 2 |
| | | |
| | (. 3 .5). | 2 |
| | 6- (1 1/2») | 6- , |
| | 6- «0» | 6- |

3.4. _____

12.3.019-80, «

Kripsol Granada GTO506-71

».

», «

2.2.



Granada GTO506-71

Kripsol

5.2. _____.

.2.2. .3.4.

6.

Kripsol Granada GTO506-71

60%.

+10 °

+35 °



Empty rectangular box with a border.

7.

Kripsol Granada GTO506-71

8.

Kripsol Granada GTO506-71

Kripsol Granada GTO506-71

9.

Kripsol Granada GTO506-71

« _____ » _____ 20 _____

10.

« _____ » _____ 20 _____

1.

(_____)

2.

12 (_____)

3.

:

4.

30 (_____)

90 (_____)

5.

(_____)

6.

7.

8.

8.1.

8.2.

8.3.

9.

9.1.

9.2.

10.

11.

12.

13.

14.

15.

16.

17.

18.

19.

()

14 ()
90 ()