

Emaux V900 (Opus)
(900 л)



1.

1.1. _____.

Emaux V900 (Opus)

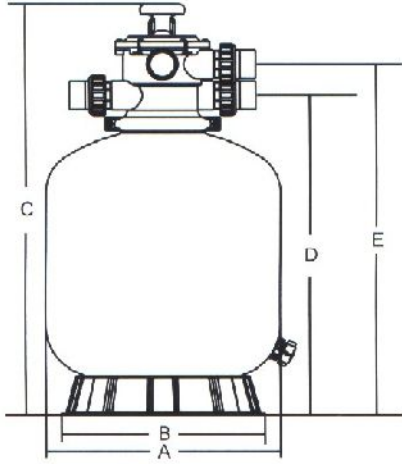
150 . . .

1.2. _____.

Emaux V900 (Opus)

1.

1



	A	B	C	D	E
	900	753	1300	1090	1172

63

1.3. _____.

BHИMAHИE !!!



Emaux V900 (Opus)

4.2

15150.

Emaux V900 (Opus)

1

1

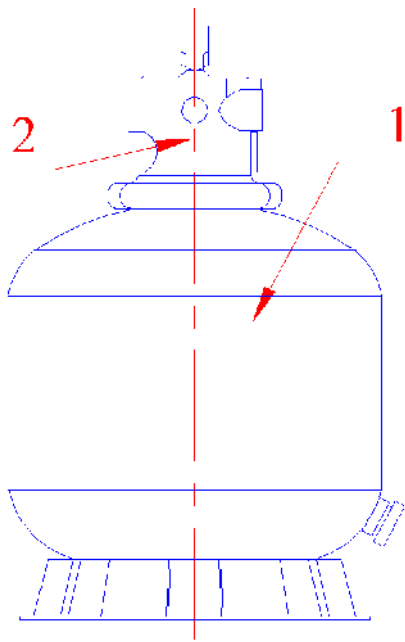
		350
		+10 +35
	%	60
	°	40
		1,5
		63
		0,5-1,0
	2	0,64
40-50 /	. /	31,2
20-22 /	. /	15,6

1.4. _____.

Emaux V900 (Opus)

2, 3, 4;

2, 3, 4



2

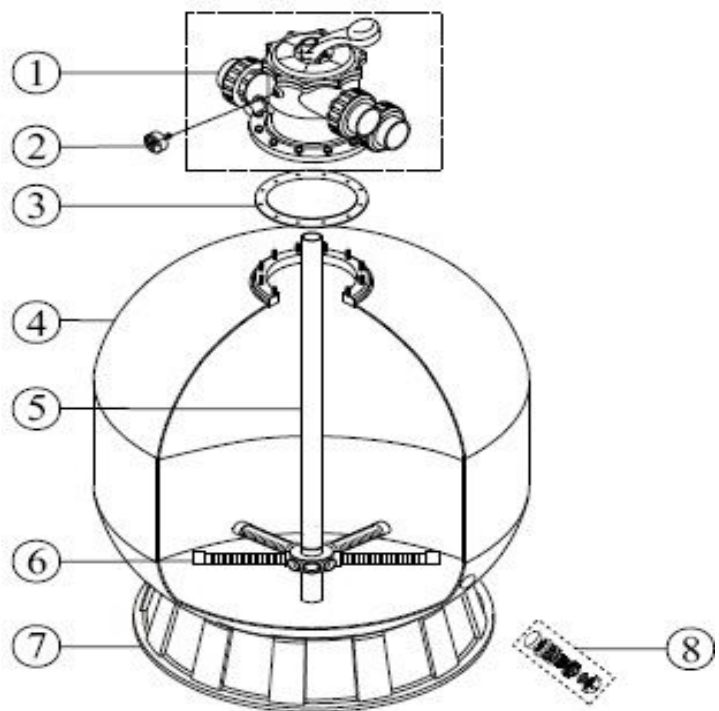
1	(900) (.) Emaux V900 (Opus)
2	6- .(2") Emaux (Opus) MPV-02

3 « 1 2» ((900) (.) Emaux V900 (Opus)

3

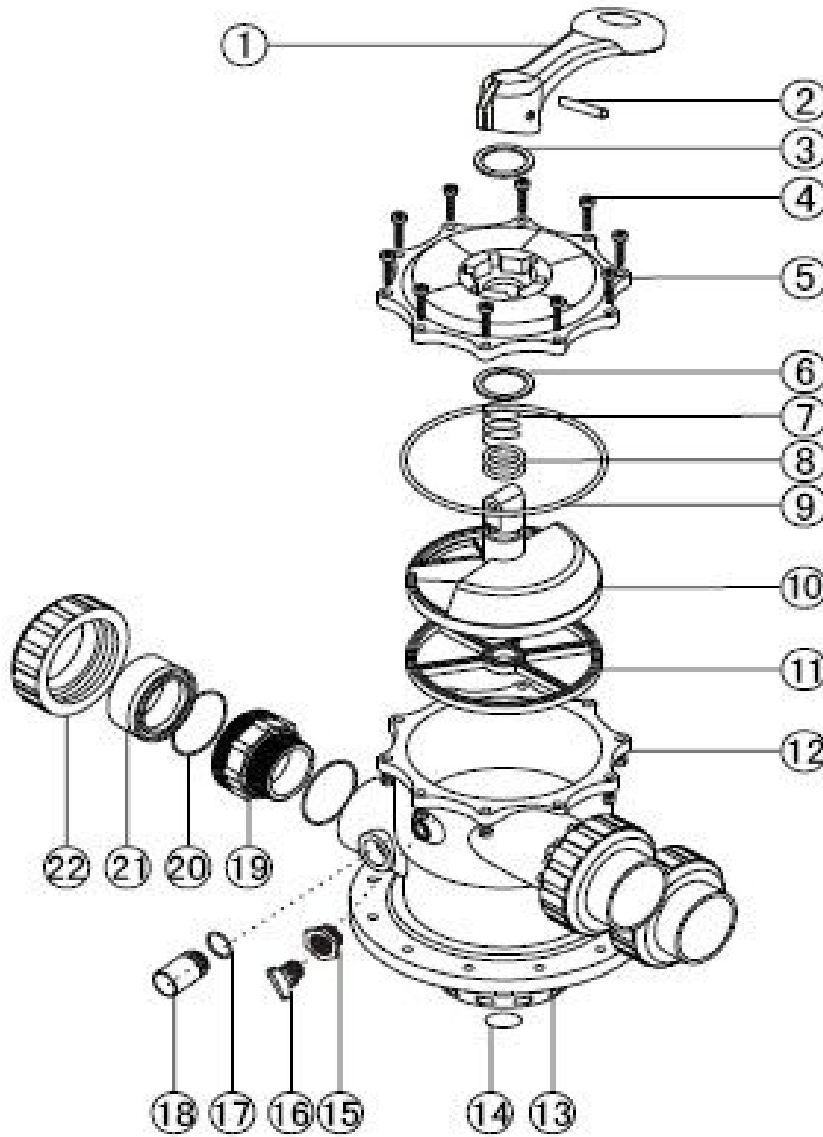
3

1	6- .(2") Emaux (Opus) MPV-02
2	Emaux (Opus) FT-03W-04-01, FT-03W-05
3	EMAUX V700-V1400 FT-03W-10
4	(900) (.) Emaux V900 (Opus) FT-01-41
5	(900) (.) Emaux V900 (Opus) FT-01-009, MPV-04W-05
6	(900) (.) Emaux V700-V1000 (Opus) FT-01-026, FT-01-027
7	(900) (.) Emaux V800- V900 (Opus) FT-01-045
8	((900)) (.) Emaux (Opus) FT-01-010



« 2 2» (6- .(2") Emaux (Opus) MPV-02

4.



4

1	6-	Emaux (Opus) MPV-01-019
2	-	6- Emaux (Opus) MPV-01W-1
3		6- Emaux (Opus) MPV-01-006
4		6- Emaux (Opus) MPV-01W-02-1,
	MPV-01W-02-2	
5	6-	Emaux (Opus) MPV-02-002
6		6- Emaux (Opus) MPV-01-007
7	6-	Emaux (Opus) MPV-01W-04
8		6- Emaux (Opus) MPV-02W-01
9	-	6- Emaux (Opus) MPV-02W-02
10		6- Emaux (Opus) MPV-02-003
11		() 6- Emaux (Opus) MPV-02-004
12	6-	Emaux (Opus) MPV-02-001
13	6-	Emaux (Opus) MPV-02-009
14	- 6-	(. .) Emaux
	(Opus) MPV-02W-03	
15		6- Emaux (Opus) MPV-01-014
16	-	6- Emaux (Opus) CP-01W-05, CP-01-013
17		6- Emaux (Opus)
	MPV-03W-01	
18		6- Emaux (Opus) MPV-04-010
19	6-	(2") Emaux (Opus) MPV-02-005
20	-	6- (2") Emaux (Opus) CP-01W-04
21		6- (2") Emaux (Opus) MPV-02-007
22	-	6- (2") Emaux (Opus)
	MPV-02-006	

1.5. _____

« »

- (900) (.) Emaux V900 (Opus);
- 6- .(2") Emaux (Opus) MPV-02;

(.)

(.)

6- 1,5

6- .(2") Emaux (Opus) MPV-02

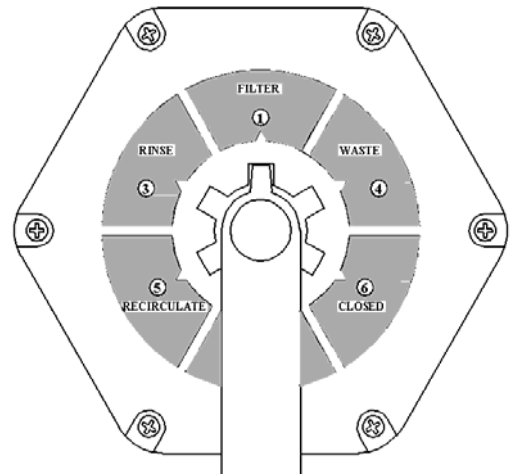
- «1 (FILTER)» - ;
- «2 (BACKWASH)» - (.);
- «3 (RINSE)» - (.);
- «4 (WASTE)» - ;
- «5 (RECIRCULATE)» - ;
- «6 (CLOSED)» - 6- ;



5.

BHITMAHIE !!!

5

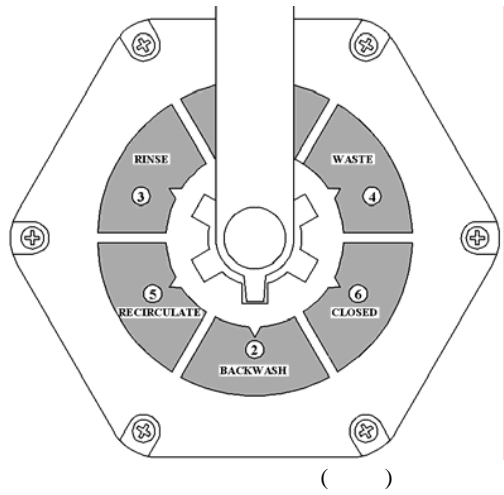


(.)

6.

BHITMAHIE !!!

BHITMAHIE !!!



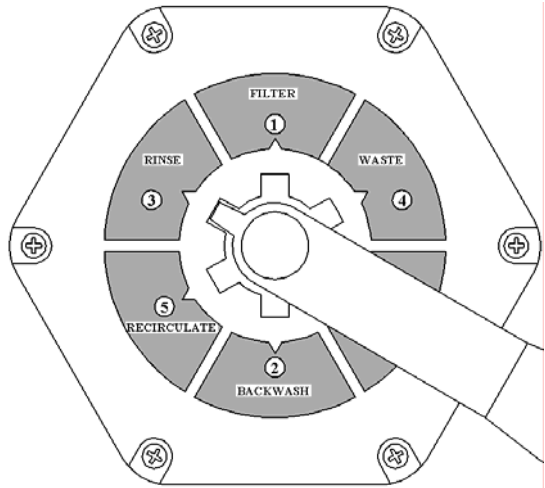
() : () , ()

7.

BHITMAHIE !!!

BHITMAHIE !!!

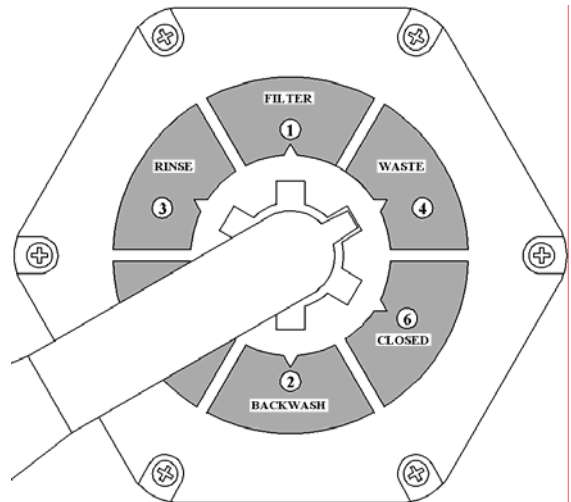
7



8.

BHITMAHIE !!!

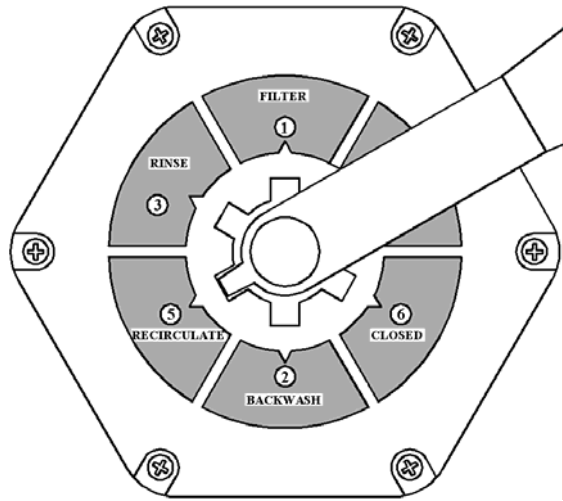
8



9.

BHITMAHIE !!!

9



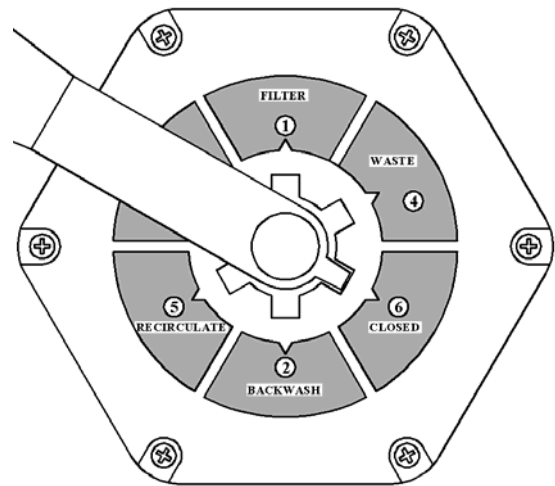
CLOSED 6-
CLOSED

10.

6-

BHITMAHIE !!!

10



1.6. _____

(900) (.) Emaux V900 (Opus),

BHITMAHIE !!!

Emaux V900 (Opus)



(900) (.) Emaux V900 (Opus),

		950	950
			1100



6- .(2")

Emaux (Opus) MPV-02,

		300	300	400

2.

2.1. _____

Emaux V900 (Opus)



-	:		
-	;		
-	,		
-			

2.2. _____

Emaux V900 (Opus)

- 12.1.019-79 .
- 12.1.013-78 .
- 12.3.032-84 .
- 12.3.019-80 .
- 12.1.030-81 .
- 153-34.0-03.150-00. ()
- 12.3.006-75 .
- 12.1.005-88 .
- 12.3.009-76 .
- 12-03-01. I.
- 12-04-02. 2.
- 12.1.004-91 .
- 01-93.
- 22.0.01-94. .
- 22.3.03-94. .

2.3. _____

Emaux V900

(Opus)

- . .)
-
-
-
- +10 +35 ° .
-
-
-

1%

60%,

Emaux V900 (Opus)

Emaux V900 (Opus)

Emaux V900 (Opus)

24-

Emaux V900 (Opus)

2.4. _____.

ВНИМАНИЕ !!!

11 12 Emaux V900
(Opus) Emaux SB30 (Opus), _____

Emaux V900 (Opus) _____ :

ВНИМАНИЕ !!!

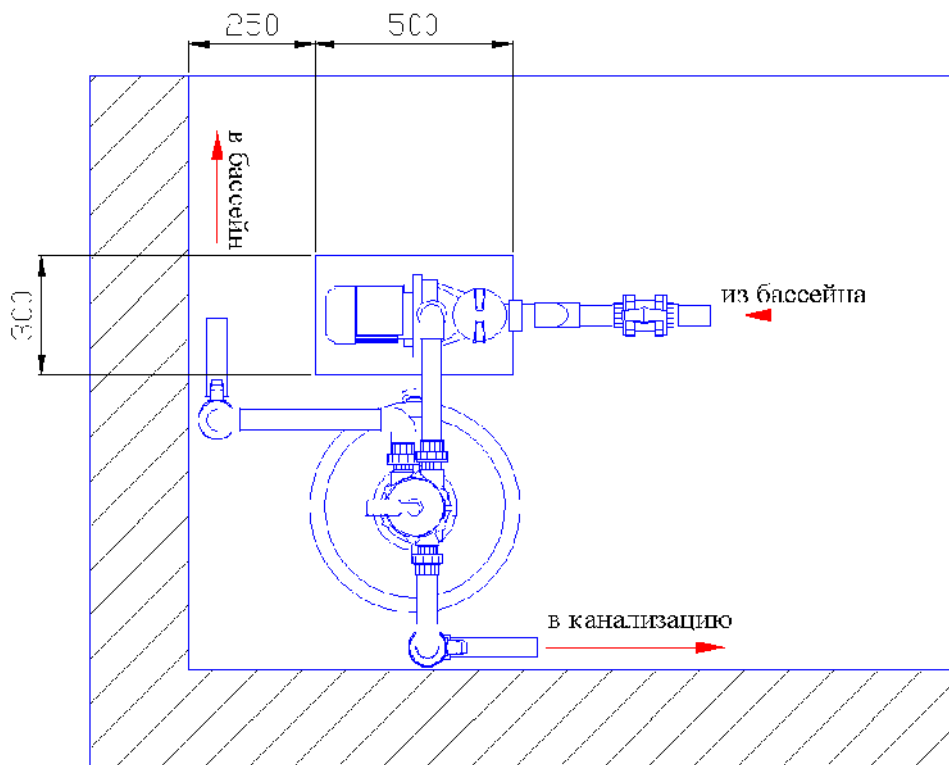
_____ 950 _____

Emaux V900 (Opus) _____ (_____)

2.1. 2.3. _____ 1

Emaux V900 (Opus) _____ 11.

11



ВНИМАНИЕ !!!

_____ (_____).

ВНИМАНИЕ !!!

(_____).

(_____ 3 _____).

6-



_____ : Emaux V900 (Opus)

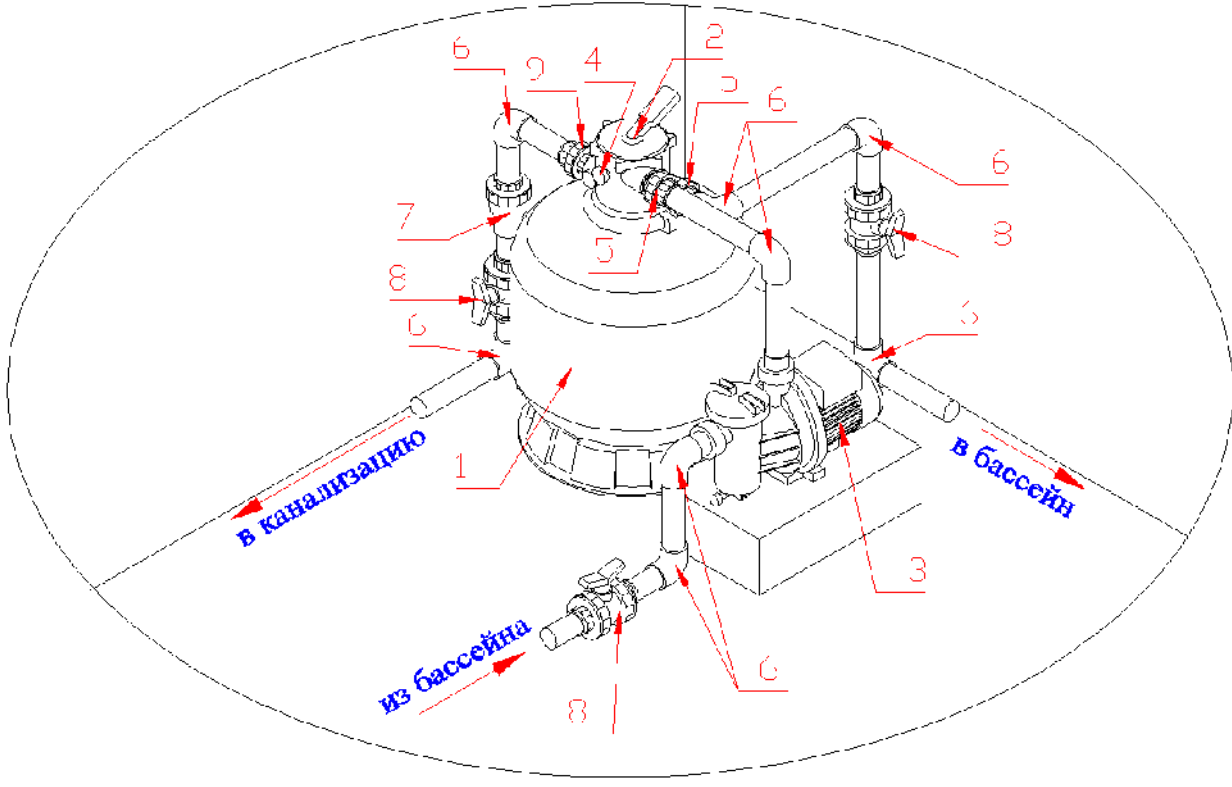
— (. . . 3 .2) — (. . . 4 .16).

⊘ :
6-

— Emaux SB30 (Opus) « Emaux SB30 (Opus)».
— Emaux V900 (Opus) 12.
5.

⊘ :

12



5

1	(900) (. . .) Emaux V900 (Opus)
2	6- . (2") Emaux (Opus) MPV-02
3	2,2 220 Emaux SB30 (Opus)
4	Emaux (Opus) FT-03W-04-01, FT-03W-05
5	6- . 2" Emaux (Opus)
6	90 . . 63 Coraplast (7101063)
7	. 63 Coraplast (1310063)
8	. 63 Coraplast (1010063)
9	6- . 2" Emaux (Opus)

— Emaux SB30 (Opus) «
Emaux SB30 (Opus)».

ВНИМАНИЕ !!!

950 .

Emaux V900 (Opus) :

—
— 6- . «6».
— Emaux SB30 (Opus) « Emaux SB
(Opus)».
— ;
— 13,



- 6- () Emaux V900 (Opus) (900 .)
- Emaux V900 (Opus).
- , , 6- .

2.5. _____.

Emaux V900 (Opus) :

- () () .
- , ;
- , ;
- ;
- Emaux SB30 (Opus) «
- Emaux SB30 (Opus)».



: Emaux V900 (Opus),

2.6. _____.

- Emaux SB30 (Opus) (1.5). Emaux SB30 (Opus)».
- () .
- () .
- Emaux SB30 (Opus) « 1.5). Emaux SB30 (Opus)».



:

3.

3.1. _____.

Emaux V900 (Opus) ,

ВНИМАНИЕ !!!

Emaux V900 (Opus)
. 2.5 2.6 .



! ;

Emaux V900 (Opus)
.1.2. ;
Emaux V900 (Opus)
4.2 15150 .1.2.

; Emaux V900 (Opus)
. 51232-98 2.1.4.559-96 ;
6

12 (;
); 4
;

Emaux V900 (Opus)

;

Emaux V900 (Opus) (;
);

; Emaux V900 (Opus)

; ;

Emaux V900 (Opus) ();
() ;
Emaux V900 (Opus) ();

; ;

6- ;
Emaux V900 (Opus)

6- ;
Emaux V900 (Opus)
”
Emaux V900 (Opus)
PH.
Emaux V900 (Opus)

3.2. _____

Emaux V900 (Opus)
+5°C 60% ;
Emaux V900 (Opus) ;
Emaux V900 (Opus) ;
24- ;
Emaux V900 (Opus) .2

3.3. _____

(Opus)

Emaux V900
Emaux V900 (Opus),

Emaux SB30 (Opus).

Emaux V900 (Opus)

6

Emaux V900 (Opus)

6

	.1.2.	
	(,	(:
)		.)
		3
	.1.2.	
	(,	
)		
	/	
6-	6-	6-
6-	(1 1/2")	6-
	(,	
)		

	()	2
	()	
()	«) » (,	2
()	()	PH
	()	2
		2
	6- (1 1/2")	6-

3.4. _____

12.3.019-80, « Emaux V900 (Opus) », « 2.2. ».
Emaux SB30 (Opus).



! Emaux V900 (Opus)

3.5. _____

4.

4.1. _____

Emaux V900 (Opus)

Emaux V900 (Opus)

—
—
—
—
—
—
—
—
—
—
—

6-

6-

()



Emaux V900 (Opus)

4.2. _____

()

. 2.2. . 3.4.

4.3. _____



Emaux V900 (Opus)

. 2.4.

4.4. _____

Emaux V900 (Opus)

. 2.5.

()

4.4. _____

. 1.2.

()

. 2.4.

—
—
—

1.2. . 6.

5.

5.1. _____

ВНИМАНИЕ !!!

5.2. _____

. 2.2. . 3.4.

6.

Emaux V900 (Opus)

+10 ° +35 °

60%



7.

Emaux V900 (Opus)

8.

Emaux V900 (Opus)

Emaux V900 (Opus)

9.

Emaux V900 (Opus)

«_____» _____20_____

10.

«_____» _____20_____

1.

(,)

2.

12 ()

3.

:

4.

30 ()

90 ()

5.

()

6.

7.

8.

8.1.

8.2.

8.3.

9.

9.1.

.8

9.2.

()

10.

.9

.8

11.

, , : , , , , , , .

12.

, . ,

13.

,

14.

, , () .

15.

, , , , .

16.

, 14 () , 90 () .

17.

, . ,

18.

, , , .

19.

() .
