

Emaux V650 (Opus)
(650 л)



1.

1.1. _____.

Emaux V650 (Opus)

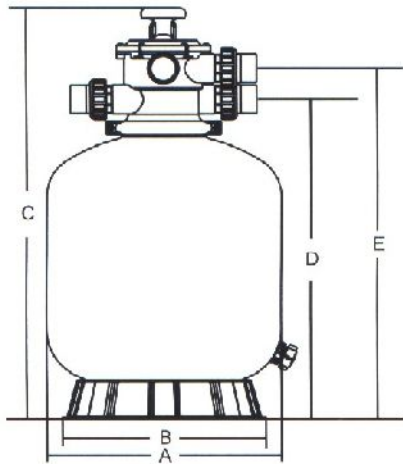
70 . . .

1.2. _____.

Emaux V650 (Opus)

1.

1

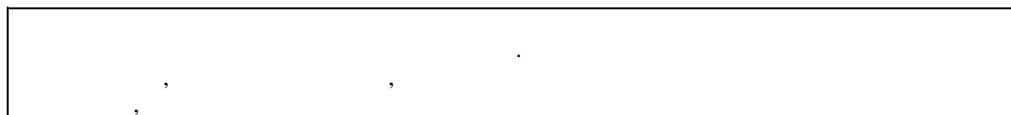


	A	B	C	D	E
	635	500	950	775	835

50

1.3. _____.

BHИMAHИE !!!



Emaux V650 (Opus)

4.2

15150.

Emaux V650 (Opus)

1

1

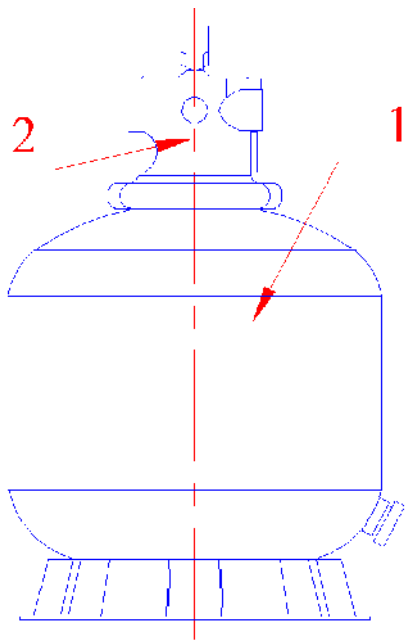
		150
	°	+10 +35
	%	60
	°	40
		1,5
		50
		0,5-1,0
	2	0,32
40-50 /	. /	15,60
20-22 /	. /	7,8

1.4. _____.

Emaux V650 (Opus)

2, 3, 4;

2, 3, 4



1	(650) (.) Emaux V650 (Opus)
2	6- .(1½") Emaux (Opus) MPV-01C

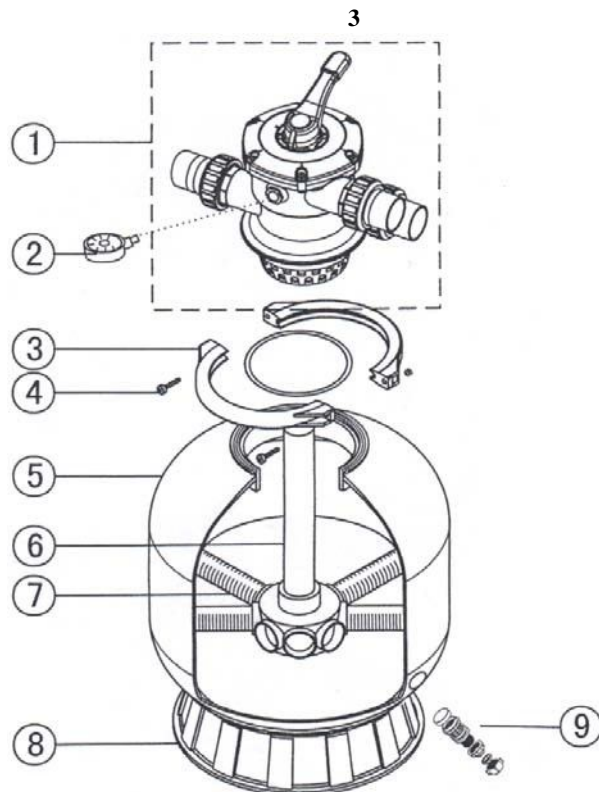
3

« 1 2» ((650) (.) Emaux V650 (Opus))

3

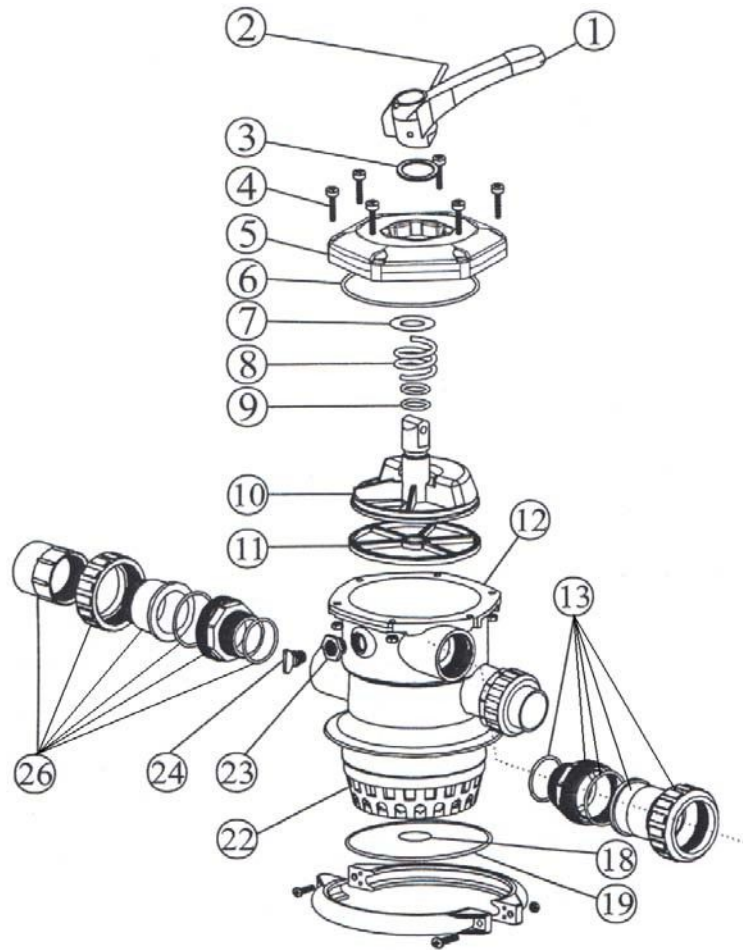
3

1	6- .(1½") Emaux (Opus) MPV-01C
2	(650) (.) Emaux V650 (Opus) FT-03W-04-02, FT-03W-05
3	(650) (.) Emaux V650 (Opus) FT-01-003
4	(650) (.) Emaux V650 (Opus) MPV-01W-10-1, MPV-01W-10-2
5	(650) (.) Emaux V650 (Opus) FT-01-038
6	(650) (.) Emaux V650 (Opus) FT-01-031, FT-01-032, MPV-03W-03
7	(650) (.) Emaux V650 (Opus) FT-01-023
8	(650) (.) Emaux V650 (Opus) FT- 01-007
9	(.) (650) (.) Emaux V650 (Opus) FT-01-010



« 2 2» (6- .(1½") Emaux (Opus) MPV-01C

4.



1	6-	Emaux (Opus) MPV-01-019
2	-	6- Emaux (Opus) MPV-01W-1
3		6- Emaux (Opus) MPV-01-006
4	MPV-01W-02-1	6- Emaux (Opus) MPV-01W-02-1,
5	6-	Emaux (Opus) MPV-01C-004
6	-	6- Emaux (Opus) MPV-01W-03
7		6- Emaux (Opus) MPV-01-007
8	6-	Emaux (Opus) MPV-01W-04
9		6- Emaux (Opus) MPV-01W-05
10	6-	Emaux (Opus) MPV-01-005
11		() 6- Emaux (Opus) MPV-01-015
12	6-	Emaux (Opus) MPV-01-001
13	6-	1½" Emaux (Opus) (MPV-01W-06/MPV-03-004/MPV-01W-7/MPV-01-010/MPV-01-009)
18	-	6- (. .) Emaux (Opus) MPV-01W-8
19	-	Emaux (Opus) MPV-01W-9B
22	6-	Emaux (Opus) MPV-01-012
23		6- Emaux (Opus) MPV-01-014
24	-	6- Emaux (Opus) CP-01W-05, CP-01-013
26		6- 1½" Emaux (Opus) (MPV-01-017/MPV-01-018)

1.5. _____:

Emaux V650 (Opus)

- (650) () Emaux V650 (Opus);
- 6- (1½") Emaux (Opus) MPV-01C;

()

()

6- 1,5

6- (1½") Emaux (Opus) MPV-01C

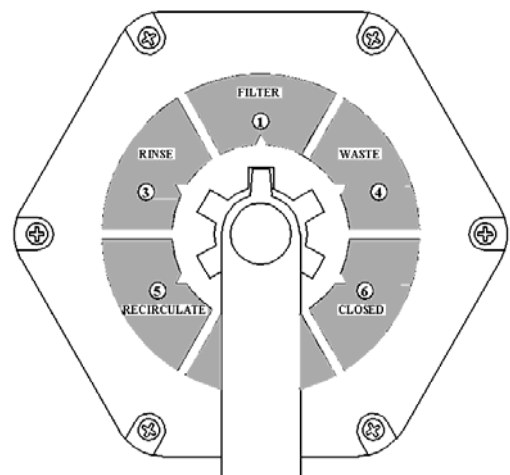
- «1 (FILTER)» - ;
- «2 (BACKWASH)» - () ;
- «3 (RINSE)» - () ;
- «4 (WASTE)» - ;
- «5 (RECIRCULATE)» - ;
- «6 (CLOSED)» - 6- ;



5.

BHITMAHIE !!!

5

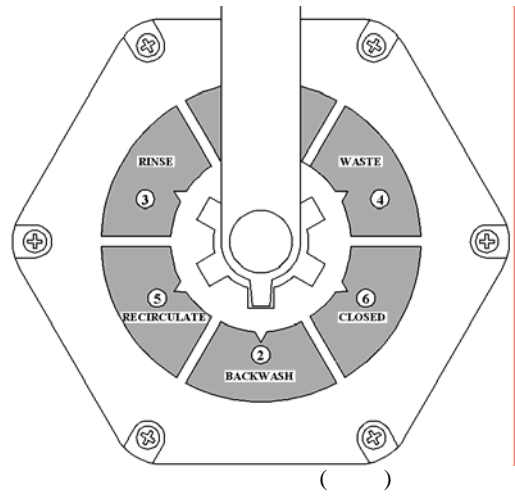


()
()

6.

BHITMAHIE !!!

BHITMAHIE !!!

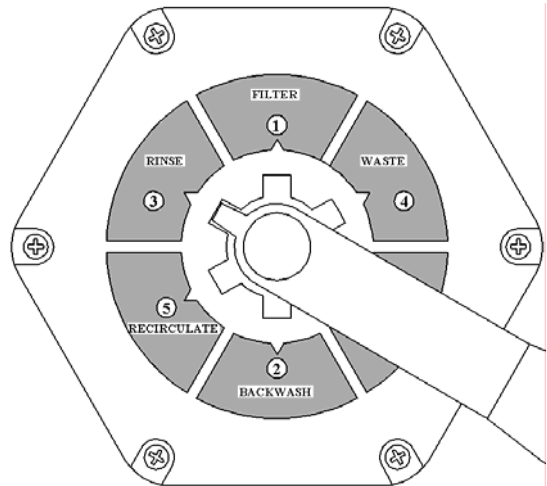


() () ; 7.

BHITMAHIE !!!

BHITMAHIE !!!

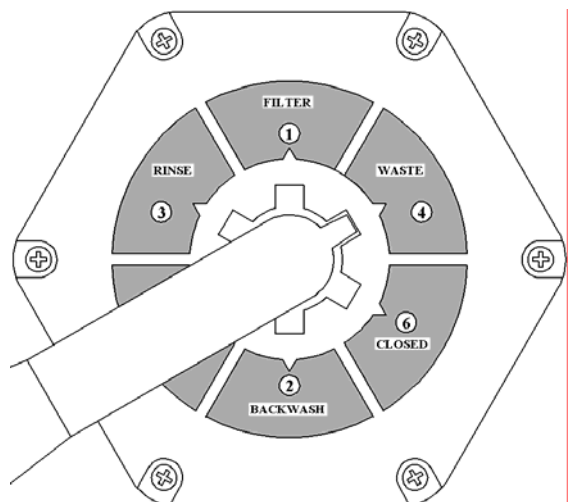
7



; 8.

BHITMAHIE !!!

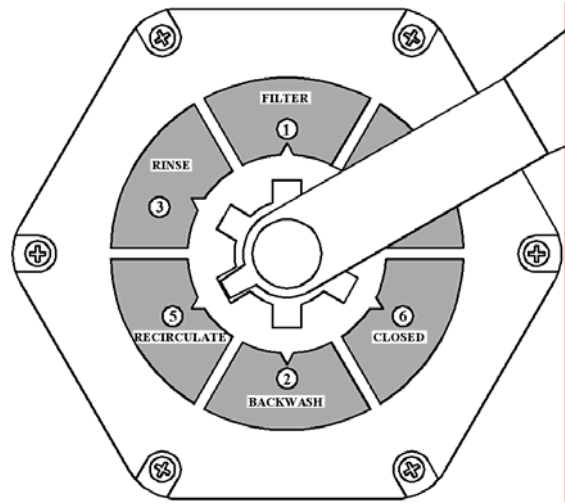
8



9.

BHITMAHIE !!!

9



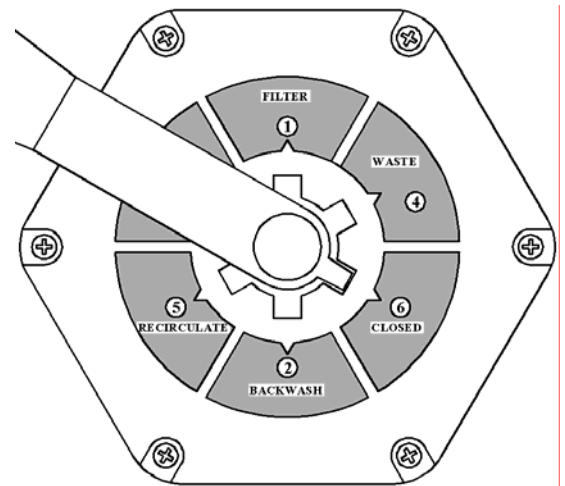
CLOSED 6-
CLOSED

10.

6-

BHITMAHIE !!!

10



Emaux V650 (Opus)

— Emaux V650 (Opus)

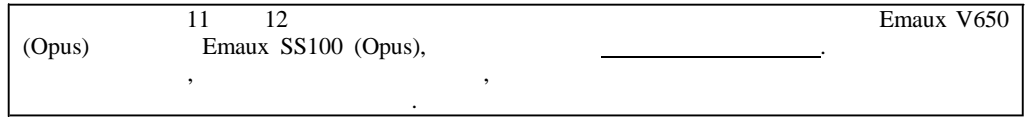
— Emaux V650 (Opus)

24-

— Emaux V650 (Opus)

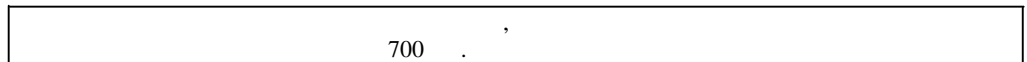
2.4. _____

ВНИМАНИЕ !!!



Emaux V650 (Opus)

ВНИМАНИЕ !!!



Emaux V650 (Opus)

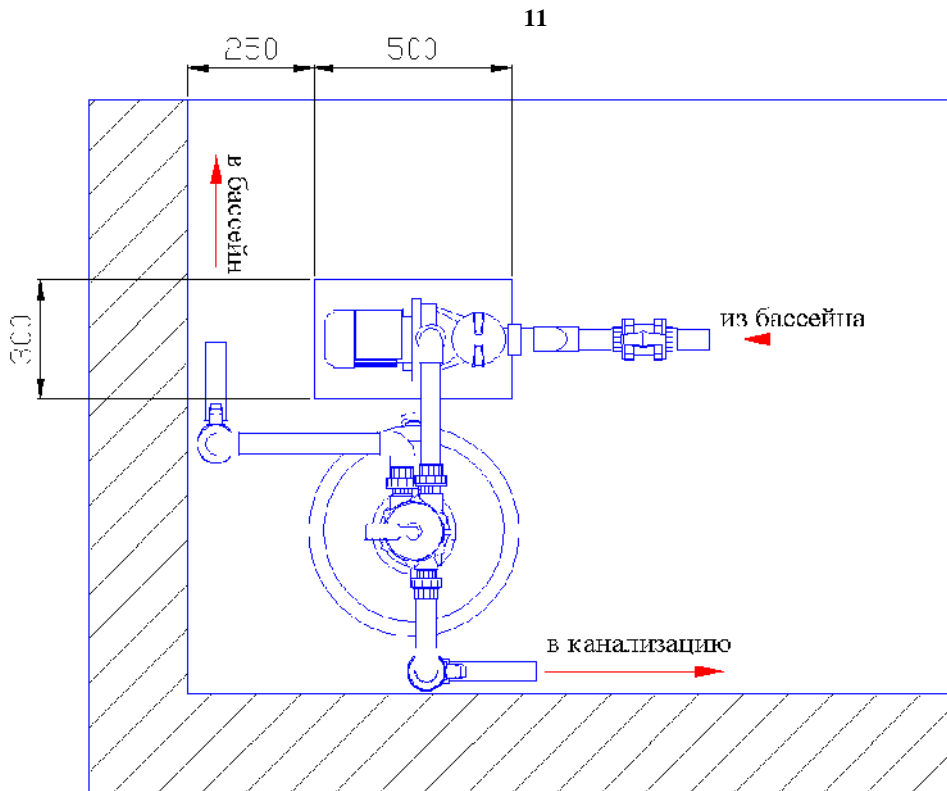
(3)

2.1. 2.3.

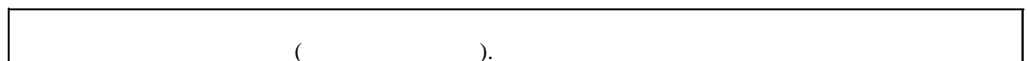
1

Emaux V650 (Opus)

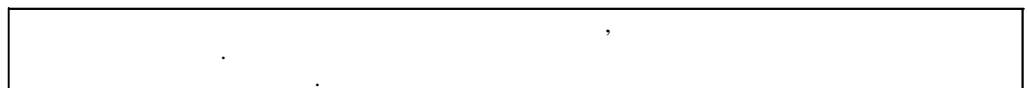
11.



ВНИМАНИЕ !!!



ВНИМАНИЕ !!!



- () .
 -
 -
 - 6- (. 4 .19).
 - 6- (. 3 .3)



: () Emaux V650 (Opus) FT-01-003

- (. 3 .2) - (. 4 .24).



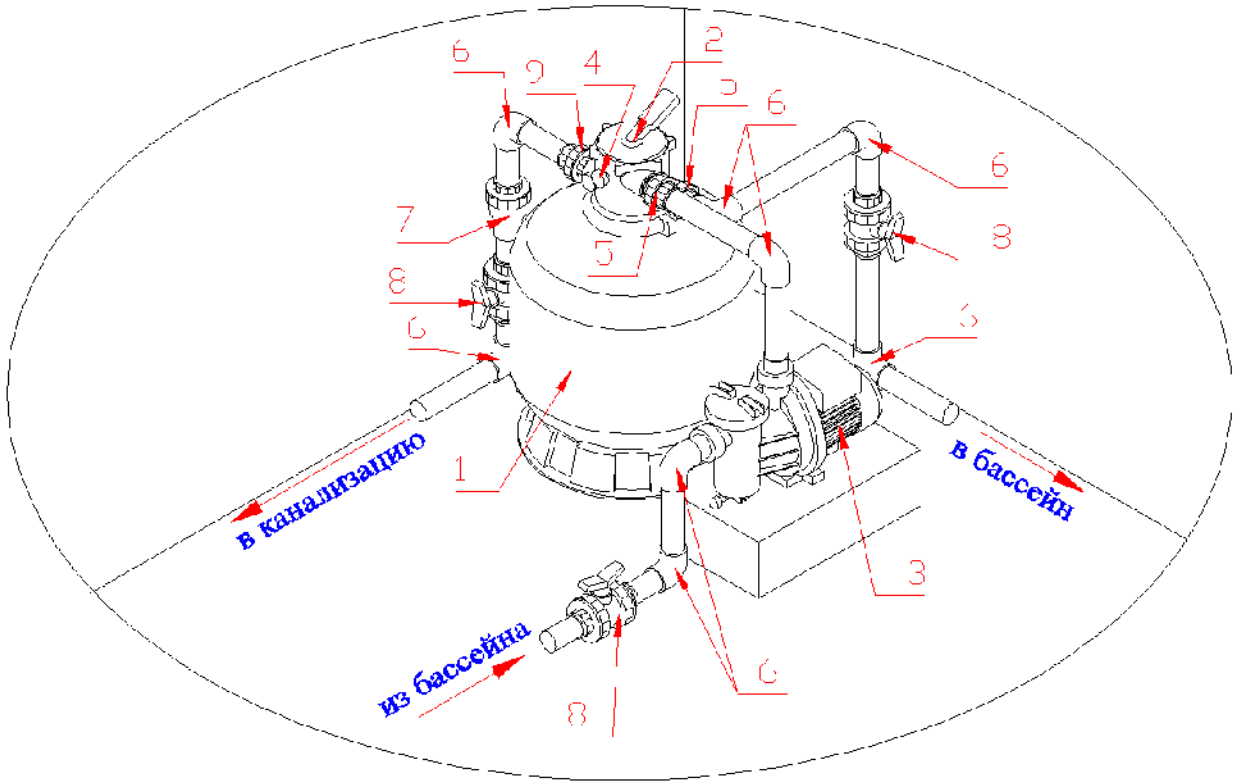
: 6- . 6-

- Emaux SS100 (Opus) « Emaux SS100 (Opus)».
 - Emaux V650 (Opus) 12.
 5.



:

12



5

1	(650) (.) Emaux V650 (Opus)
2	6- . (1½") Emaux (Opus) MPV-01C
3	0,75 220 Emaux SS100 (Opus)
4	Emaux (Opus) FT-03W-04-02, FT-03W-05
5	6- . 1½" Emaux (Opus) (MPV-01W-06/MPV-03-004/MPV-01W-7/MPV-01-010/MPV-01-009)
6	90 . . 50 Coraplast (7101050)
7	. 50 Coraplast (1310050)
8	. 50 Coraplast (1010050)
9	6- . 1½" Emaux (Opus) (MPV-01-017/MPV-01-018)

- Emaux SS100 (Opus) « Emaux SS100 (Opus)».

ВНИМАНИЕ !!!

700

Emaux V650 (Opus)

:

6-

«6».

Emaux SS100 (Opus)

«

Emaux SS1

(Opus)».

:

13,

13



6- () Emaux V650 (Opus)

(650

) Ema V500 (Opus).

6-

2.5.

Emaux V650 (Opus)

:

()

()

Emaux SS100 (Opus)

«

Emaux SS100 (Opus)».



Emaux V650 (Opus),

2.6.

Emaux SS100 (Opus)

(1.5

)

Emaux SS100 (Opus)»

()

()

Emaux SS100 (Opus)

(1.5

)

Emaux SS100 (Opus)»



:

3.

3.1. _____

Emaux V650 (Opus)

BHITMAHIE !!!

Emaux V650 (Opus)
.2.5 2.6



		Emaux V650 (Opus)	
-	:	Emaux V650 (Opus)	
-	.1.2.	Emaux V500 (Opus)	
-		4.2	15150
-		Emaux V650 (Opus)	.1.2.
-	.51232-98	2.1.4.559-96	
-		6	
-	12	(
-);		4
-		Emaux V650 (Opus)	
-			
-		Emaux V650 (Opus)	(
-);		
-		Emaux V650 (Opus)	
-			
-		Emaux V650 (Opus)	(
-	());
-		Emaux V650 (Opus)	(
-);
-		()
-		Emaux V650 (Opus)	
-		6-	
-	6-		
-	“	Emaux V650 (Opus)	”
-		Emaux V650 (Opus)	
-		PH.	
-		Emaux V650 (Opus)	
-			

3.2. _____

Emaux V650 (Opus)
+5°C
Emaux V650 (Opus)
Emaux V650 (Opus)

60%.

24-

Emaux V650 (Opus)

.2

3.3. _____

Emaux V650
Emaux V650

(Opus) , ,
(Opus), . ,
Emaux SS100 (Opus). Emaux V650 (Opus)

6

Emaux V650 (Opus)

6

	.1.2.	
	(,	(:
)	.)
		3
	.1.2.	
	(,	
)	
	/	
6-	6-	6-
6-	(1 1/2")	6-
	(,	
)	
	(2
)	

	()	
()		
	«) » (,	
		2
()		()
	(,	PH
)	
	()	
		2
		2
	6- (1 1/2")	6-

3.4. _____

Emaux V650 (Opus)
 12.3.019-80, « _____ », « 2.2.
 _____ ».
 Emaux SS100 (Opus).



!	Emaux V650 (Opus)
---	-------------------

3.5. _____

4.

4.1. _____

Emaux V650 (Opus)

7.

Emaux V650 (Opus)

8.

Emaux V650 (Opus)

Emaux V650 (Opus)

9.

Emaux V650 (Opus)

« _____ » _____ 20 _____

10.

« _____ » _____ 20 _____

1.

2.

3.

4.

5.

6.

7.

8.

8.1.

8.2.

8.3.

9.

9.1.

9.2.

10.

